

APP CRS 220°	Rwy Idg 4279
	TDZE 189
	Apt Elev 189

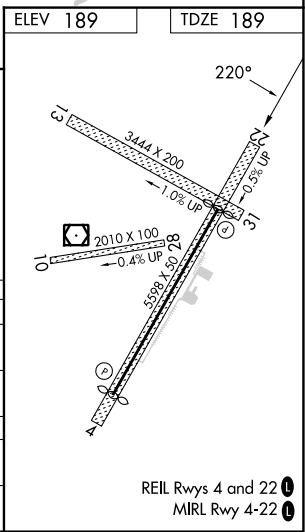
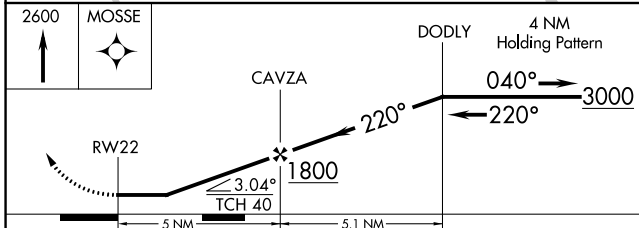
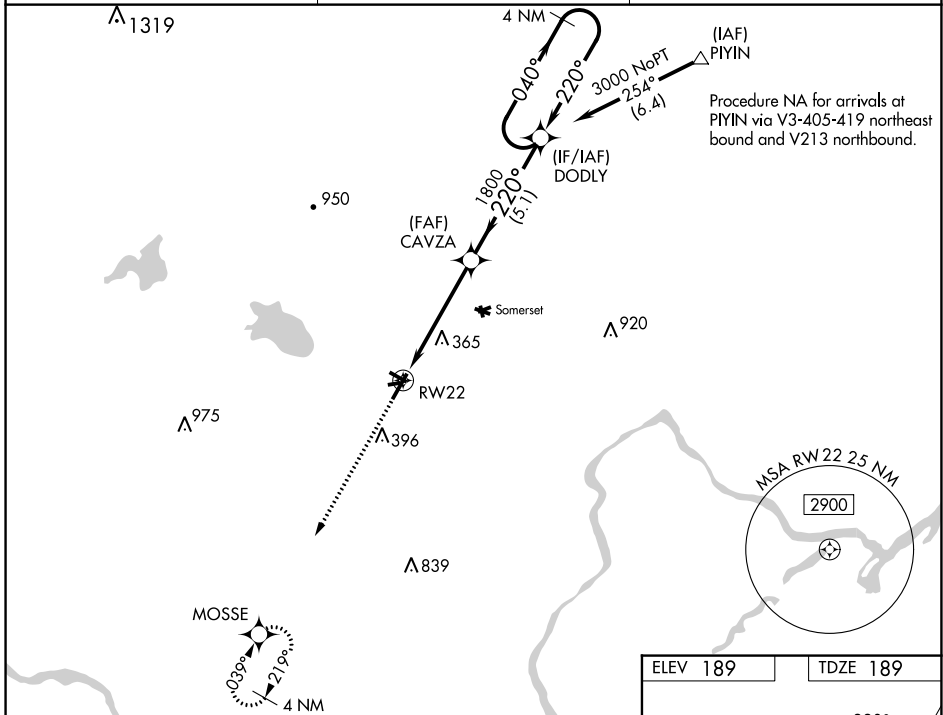
RNAV (GPS) RWY 22

SOLBERG/HUNTERDON (N51)

▽ DME/DME RNP-0.3 NA. Circling NA to Rwy 10-28 and 13-31. Rwy 22 helicopter visibility reduction below 3/4 SM NA. Obtain local altimeter setting on CTAF; when not received use Newark Liberty Intl altimeter setting.

▲ NA MISSED APPROACH: Climb to 2600 direct MOSSE and hold.

NEWARK APP CON 132.8 379.9	GCO 121.725	UNICOM 122.8 (CTAF)
--------------------------------------	-----------------------	-------------------------------



CATEGORY	A	B	C	D
RNAV MDA	620-1	431 (500-1)		NA
CIRCLING	680-1 491 (500-1)	760-1 571 (600-1)		NA
NEWARK LIBERTY INTL ALTIMETER SETTING MINIMUMS				
RNAV MDA	700-1	511 (600-1)		NA
CIRCLING	780-1 591 (600-1)	860-1 671 (700-1)		NA

NE-2, 31 OCT 2024 to 28 NOV 2024

NE-2, 31 OCT 2024 to 28 NOV 2024