

LOC I-SKC 109.5	APP CRS 103°	Rwy Idg 5849
		TDZE 901
		Apt Elev 911

ILS or LOC RWY 10

WAUKESHA COUNTY (U/S)

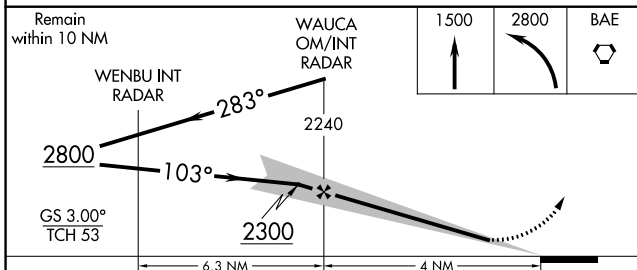
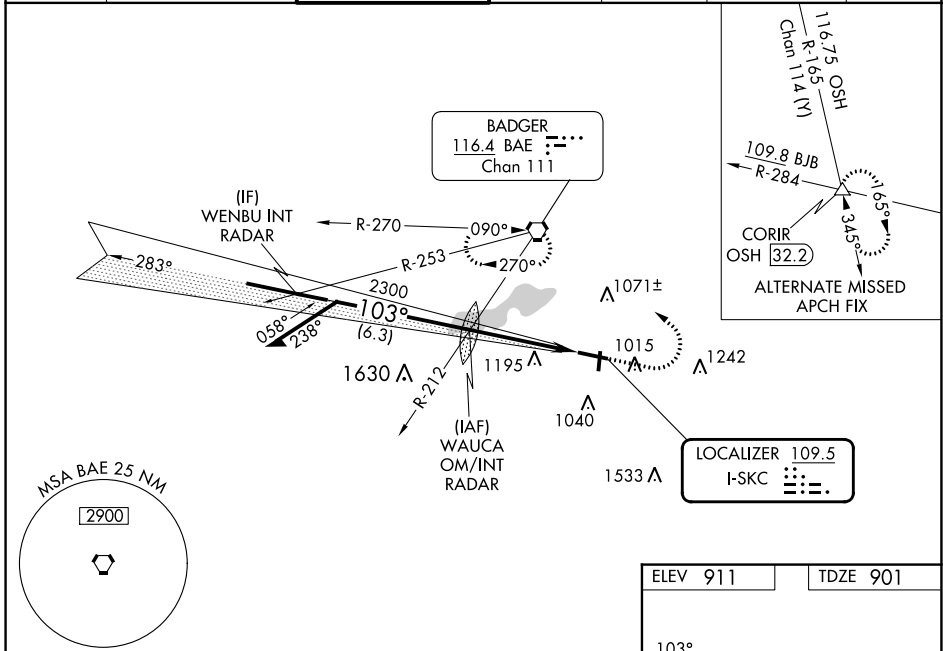
RADAR required for procedure entry.

⚠ For inoperative MALS, increase S-LOC 10 Cat C/D visibility to 1 1/2 mile. For inop MALS when using Lawrence J Timmerman altimeter setting, increase S-LOC 10 Cat C/D visibility to 1 1/2 mile. When local altimeter setting not received, use Lawrence J Timmerman altimeter setting: increase DA to 1147 feet; increase all MDAs 60 feet and increase S-LOC 10 Cat C and D and Circling Cat C and D visibility 1/4 SM.

MALS

MISSED APPROACH:
Climb to 1500 then climbing left turn to 2800 direct BAE VORTAC and hold.

ATIS 118.875	MILWAUKEE APP CON 125.35 307.0	WAUKESHA TOWER * 123.7 (CTAF)	GND CON 121.6	CLNC DEL 121.6	CLNC DEL 128.7 <small>(When twr closed)</small>	UNICOM 122.95
------------------------	--	---	-------------------------	--------------------------	--	-------------------------



ELEV 911	TDZE 901
----------	----------

TWR 960

Diagram showing the tower location relative to Runway 10. Runway 10 is 81 feet wide. Tower height is 960 feet. Other runways shown include 28, 36, and 30.

HIRL Rwy 10-28
MIRL Rwy 18-36
REIL Rwy 18, 28 and 36
FAF to MAP 4 NM
Knots: 60 90 120 150 180
Min:Seq: 4:00 2:40 2:00 1:36 1:20

CATEGORY	A	B	C	D
S-ILS-10	1101-1/2		200 (200-1/2)	
S-LOC-10	1400-1/2	499 (500-1/2)	1400-1	499 (500-1)
CIRCLING	1460-1 549 (600-1)	1500-1 589 (600-1)	1540-1 3/4 629 (700-1 3/4)	1640-2 1/4 729 (800-2 1/4)

EC-3, 31 OCT 2024 to 28 NOV 2024

EC-3, 31 OCT 2024 to 28 NOV 2024