

DUBLIN, VIRGINIA

AL-5084 (FAA)

23166

LOC I-PSK 110.9	APP CRS 058°	Rwy Idg TDZE Apt Elev	6201 2105 2105
---------------------------	------------------------	-----------------------------	---

ILS or LOC Y RWY 6

NEW RIVER VALLEY (PSK)

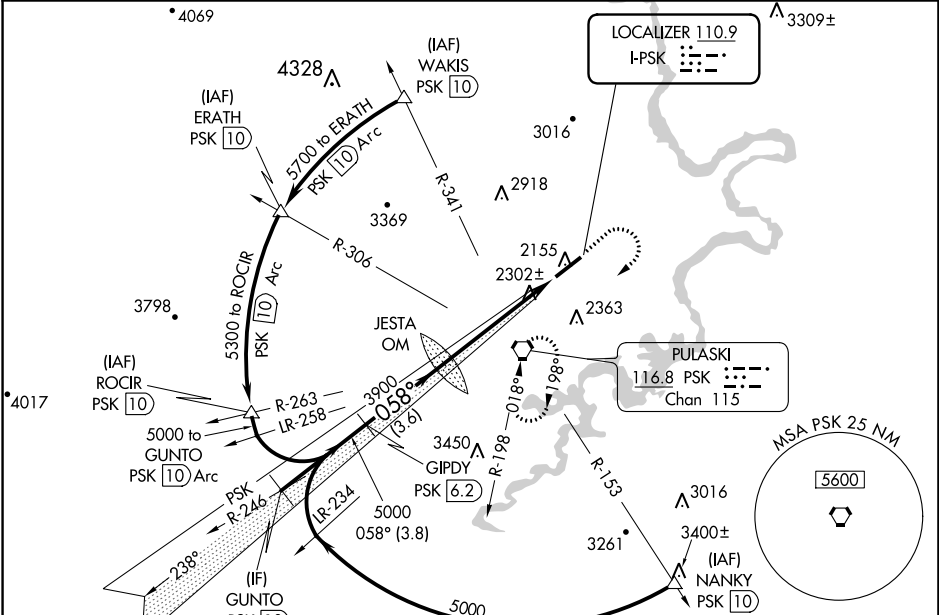
DME required.

NA Circling NA for Cat D northwest of Rwy 6-24. Inop table does not apply to S-ILS 6 all Cats and S-LOC 6 Cats A and B. For inop ALS, increase S-LOC 6 Cat C/D visibility to 1 3/8 SM.



MISSED APPROACH: Climb to 3000 then climbing right turn to 5000 direct PSK VORTAC and hold, continue climb-in-hold to 5000.

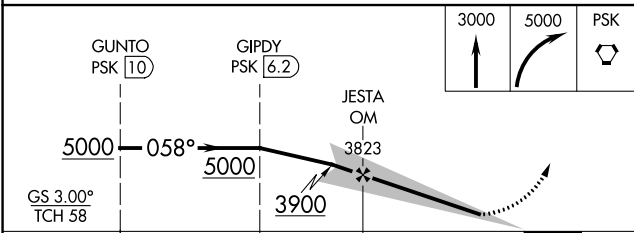
AWOS-3 127.375	ROANOKE APP CON 126.0 339.8	ROANOKE CLNC DEL 121.7	UNICOM 122.7 (CTAF)
--------------------------	---------------------------------------	----------------------------------	-------------------------------



NE-3, 31 OCT 2024 to 28 NOV 2024

NE-3, 31 OCT 2024 to 28 NOV 2024

ELEV 2105	TDZE 2105
-----------	-----------



CATEGORY	A	B	C	D
S-ILS 6		2305-1	200 (200-1)	
S-LOC 6		2560-1	455 (500-1)	
CIRCLING	2620-1 515 (600-1)	2680-1 575 (600-1)	2780-2 675 (700-2)	2780-2 1/4 675 (700-2 1/4)

ELEV 2105		TDZE 2105	
<p>2174± 2113± 2166± 2268 058° 6201 X 150 0.5% UP</p>			
FAF to MAP 5.1 NM			
Knots	60	90	120 150 180
Min:Sec	5:06	3:24	2:33 2:02 1:42

DUBLIN, VIRGINIA

37°08'N-80°41'W

Orig-B 25FEB21

NEW RIVER VALLEY (PSK)

ILS or LOC Y RWY 6