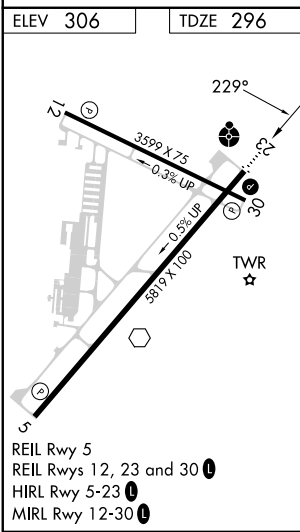
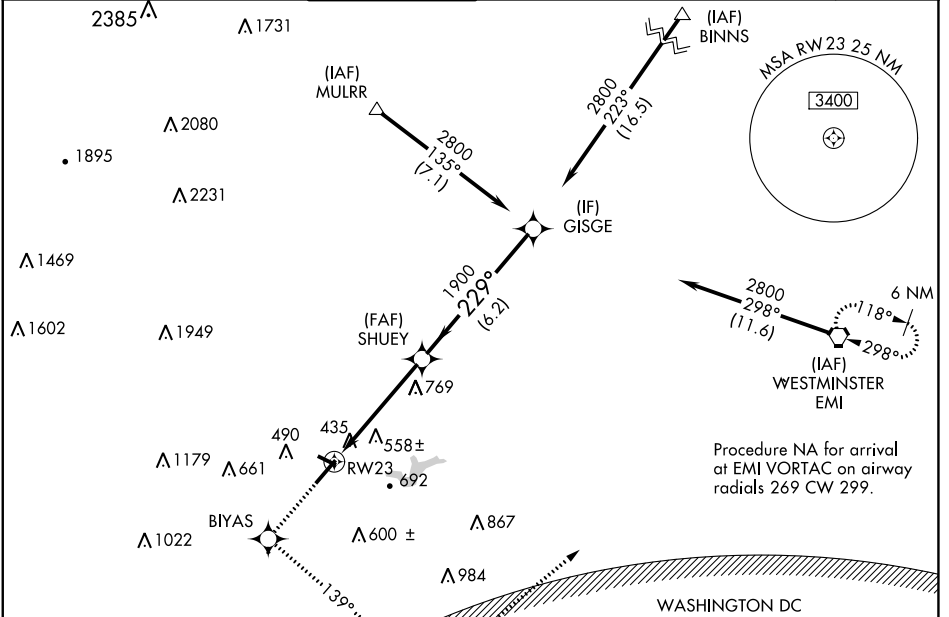


WAAS CH 81802 W23A	APP CRS 229°	Rwy Idg TDZE 296 Apt Elev 306	5819
--	------------------------	---	-------------

RNAV (GPS) Z RWY 23

FREDERICK MUNI (FDK)

RNP APCH.				ODALS		MISSED APPROACH: Climb to 3000 direct BIYAS WP and via 139° track to FEDIT WP and via 059° track to EMI VORTAC and hold.	
<p>⚠ Rwy 23 helicopter visibility reduction below 3/4 SM NA. Circling Rwy 30 NA at night. For uncompensated Baro-VNAV systems, LNAV/VNAV NA below -15°C or above 54°C. Inop table does not apply to LPV, LNAV/VNAV all Cats, and LNAV Cat C.</p>				<p>ATIS 124.875</p>		<p>POTOMAC APP CON 126.1 338.25</p>	
<p>FREDERICK TOWER ★ 132.4 (CTAF) 0</p>		<p>GND CON 127.425</p>		<p>CLNC DEL 127.425</p>		<p>CLNC DEL 126.9 (When twr closed)</p>	
				<p>UNICOM 122.95</p>			



ELEV 306	TDZE 296	<p>3000 BIYAS tr 139°</p>		<p>FEDIT tr 059°</p>	<p>EMI</p>	<p>VGSI and RNAV glidepath not coincident (VGSI Angle 3.00/TCH 54).</p>
<p>*LNAV only.</p>		<p>*2.2 NM to RWY23</p>		<p>SHUEY</p>	<p>GISGE</p>	<p>2800</p>
<p>2.2</p>		<p>2.7 NM</p>		<p>6.2 NM</p>		<p>GP 3.00° TCH 50</p>
CATEGORY	A	B	C	D		
LPV DA	690-1½ 394 (400-1½)					
LNAV/VNAV DA	1020-2½ 724 (800-2½)					
LNAV MDA	1020-¾	724 (800-¾)	1020-2	1020-2½	1020-2¼	724 (800-2¼)
C CIRCLING	1020-1	714 (800-1)	1100-2¼	1200-2¾	794 (800-2¼)	894 (900-2¾)

NE-3, 31 OCT 2024 to 28 NOV 2024

NE-3, 31 OCT 2024 to 28 NOV 2024