

WAAS CH <b>97612</b> <b>W31A</b>	APP CRS <b>309°</b>	Rwy Idg TDZE Apt Elev	<b>5500</b> <b>2025</b> <b>2032</b>
--	------------------------	-----------------------------	---

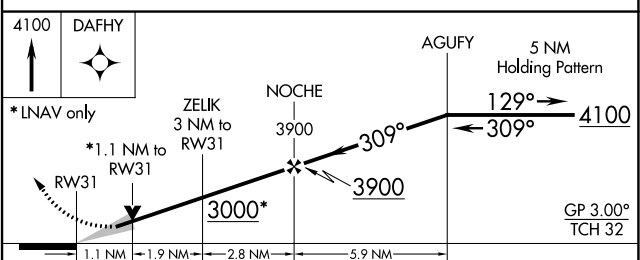
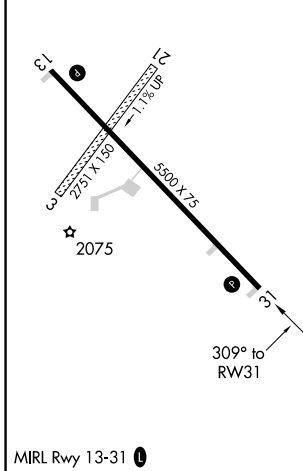
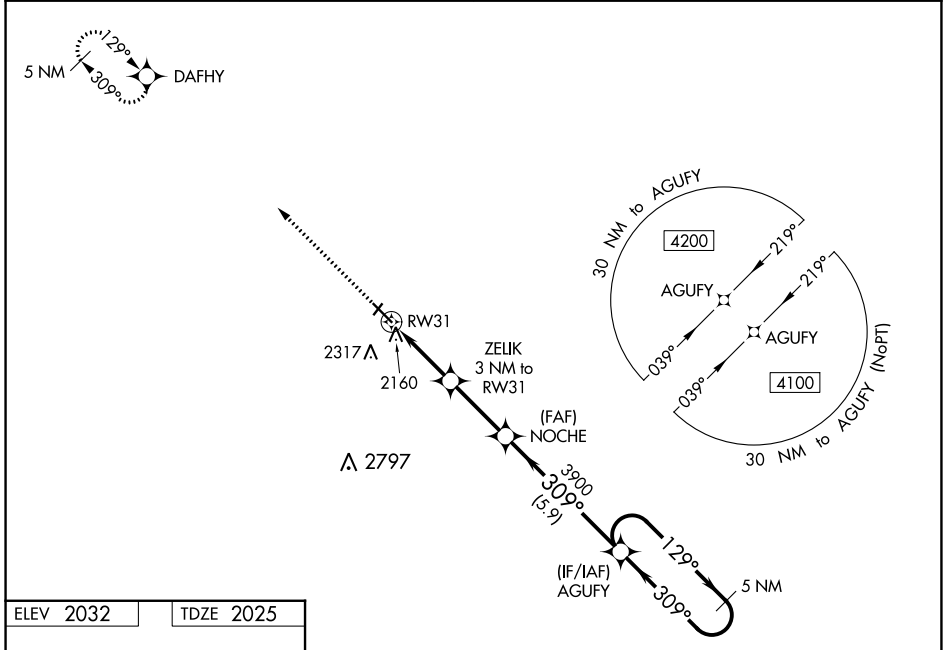
# RNAV (GPS) RWY 31

WINNER RGNL (ICR)

**⚠** Circling NA to Rws 3 and 21. For uncompensated Baro-VNAV systems, LNAV/VNAV NA below -24° C (-11°F) or above 54°C (130°F). DME/DME RNP-0.3 NA. Baro-VNAV and VDP NA when using Valentine altimeter setting. When local altimeter setting not received, use Valentine, NE altimeter setting and increase LPV DA to 2514, LNAV/VNAV DA to 2549 and all visibilities 7/8 mile, increase all MDA 240 feet; increase Cat B visibility 1/4 mile and Cat C 1 mile.

**⚠** MISSED APPROACH: Climb to 4100 direct DAFHY and hold.

ASOS <b>126.775</b>	MINNEAPOLIS CENTER <b>125.1 269.1</b>	GCO <b>121.725</b>	UNICOM <b>122.8 (CTAF) 0</b>
------------------------	--	-----------------------	---------------------------------



CATEGORY	A	B	C	D
LPV DA	2275-1	250 (300-1)		NA
LNAV/VNAV DA	2310-1	285 (300-1)		NA
LNAV MDA	2420-1	395 (400-1)	2420-1 1/8 395 (400-1 1/8)	NA
<b>C</b> CIRCLING	2580-1 548 (600-1)	2680-1 648 (700-1)	2680-1 3/4 648 (700-1 3/4)	NA

NC-1, 31 OCT 2024 to 28 NOV 2024

NC-1, 31 OCT 2024 to 28 NOV 2024