


| | | | |
|----------------------------|------------------------|-----------------------------|---|
| LOC I-PWWT 111.1 | APP CRS 197° | Rwy Idg TDZE Apt Elev | 6000 442 444 |
|----------------------------|------------------------|-----------------------------|---|

ILS or LOC RWY 20

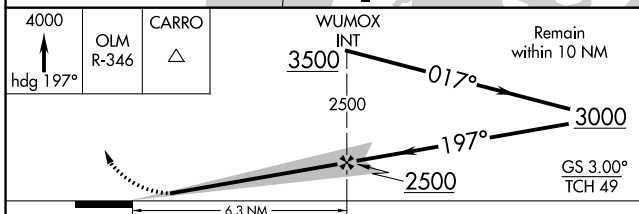
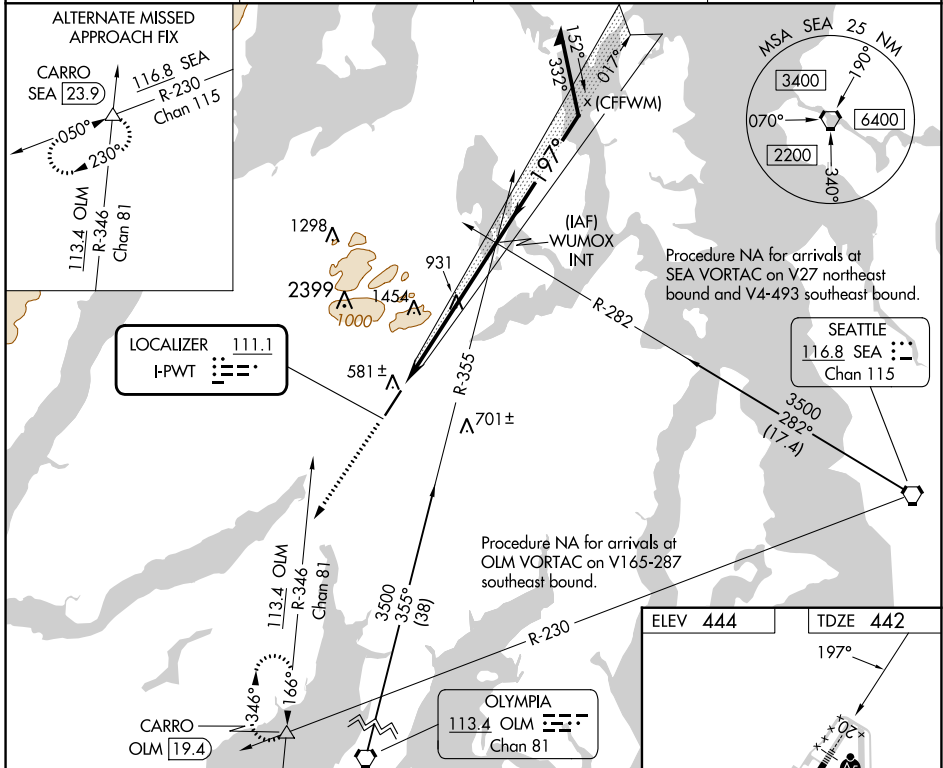
BREMERTON NTL (PWT)

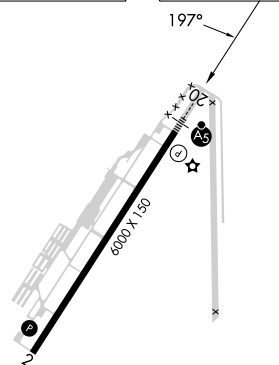
⚠ Circling NA for Cats C and D west of Rwy 2-20. When local altimeter setting not received, use Seattle-Tacoma Intl altimeter setting and increase all DA 45 feet, all MDA 60 feet and increase S-LOC 20 Cat C and D visibility 1/2 SM, Circling Cat A, C and D visibility 1/2 SM. For inop ALS, increase S-LOC 20 Cat C and D visibility to 2 SM. For inop ALS, when using Seattle-Tacoma Intl altimeter setting, increase S-LOC 20 Cat C and D visibility to 2 1/2 SM.

MALSR 

MISSED APPROACH: Climb to 4000 on heading 197° and OLM VORTAC R-346 to CARRO INT/OLM 19.4 DME and hold, continue climb-inhold to 4000.

| | | | |
|--------------------------|---|--------------------------|----------------------------------|
| AWOS-3PT 121.2 | SEATTLE APP CON 120.1 254.4 269.125 | CLNC DEL 127.1 | UNICOM 123.05 (CTAF) 0 |
|--------------------------|---|--------------------------|----------------------------------|



| | |
|--|--------------------------|
| ELEV 444 | TDZE 442 |
| 197° | |
|  | |
| REIL Rwy 2 0 | |
| HIRL Rwy 2-20 0 | |
| FAF to MAP 6.3 NM | |
| Knots | 60 90 120 150 180 |
| Min:Sec | 6:18 4:12 3:09 2:31 2:06 |

| CATEGORY | A | B | C | D |
|-------------------|---------------------------|-------------------------------|-------------------------------|-------------------------------|
| S-ILS 20 | 642-1/2 200 (200-1/2) | | | |
| S-LOC 20 | 1200-1/2 758 (800-1/2) | 1200-3/4 758 (800-3/4) | 1200-1 3/4 758 (800-1 3/4) | 758 (800-1 3/4) |
| C CIRCLING | 1200-1 756 (800-1) | 1200-1 1/4 756 (800-1 1/4) | 1200-2 1/4 756 (800-2 1/4) | 1240-2 1/2 796 (800-2 1/2) |

NW-1, 31 OCT 2024 to 28 NOV 2024

NW-1, 31 OCT 2024 to 28 NOV 2024