

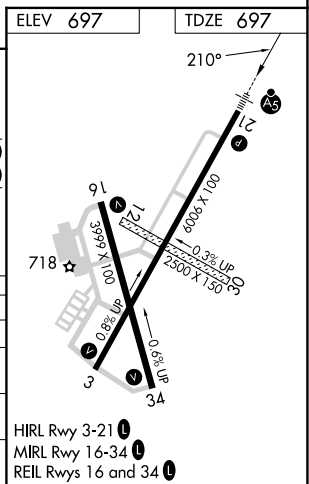
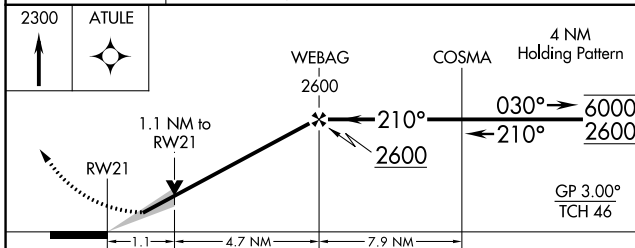
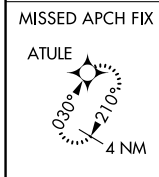
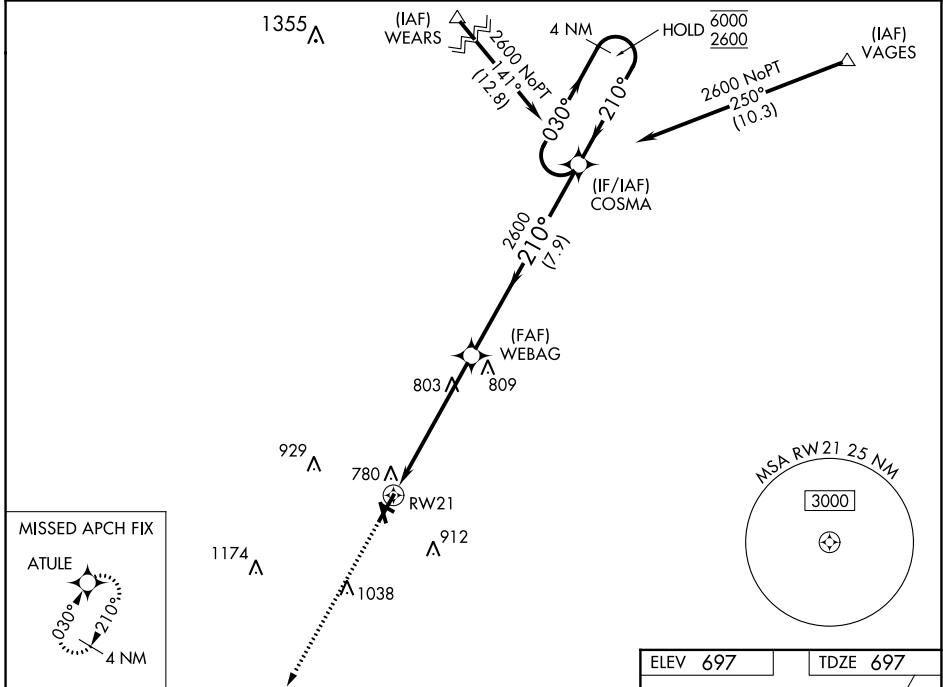
WAAS CH 58004 W21A	APP CRS 210°	Rwy Idg TDZE Apt Elev	6006 697 697
--	------------------------	-----------------------------	---

RNAV (GPS) RWY 21

VERMILION RGNL (D.V)

RNP APCH - GPS.		MALSRL	MISSED APPROACH: Climb to 2300 direct ATULE and hold.
<p>⚠ Circling NA to Rwys 12 and 30. For uncompensated Baro-VNAV systems, LNAV/VNAV NA below -16°C or above 54°C. For inop ALS, increase LPV all Cats visibility to 1 SM and LNAV Cat D visibility to 1 1/4 SM.</p>			

AWOS-3 119.275	CHAMPAIGN APP CON ★ 121.35 285.65	CLNC DEL 121.7	UNICOM 122.7 (CTAF)
--------------------------	---	--------------------------	-------------------------------



CATEGORY	A	B	C	D
LPV DA		990-1/2	293 (300-1/2)	
LNAV/VNAV DA		1069-3/4	372 (400-3/4)	
LNAV MDA	1080-1/2	383 (400-1/2)		1080-1 383 (400-1)
CIRCLING	1160-1	463 (500-1)	1240-1/2 543 (600-1/2)	1340-2 643 (700-2)

EC-3, 31 OCT 2024 to 28 NOV 2024

EC-3, 31 OCT 2024 to 28 NOV 2024