

WAAS CH 56301 W02A	APP CRS 022°	Rwy Idg TDZE 623 Apt Elev 623	5003
--	------------------------	---	-------------

RNAV (GPS) RWY 2

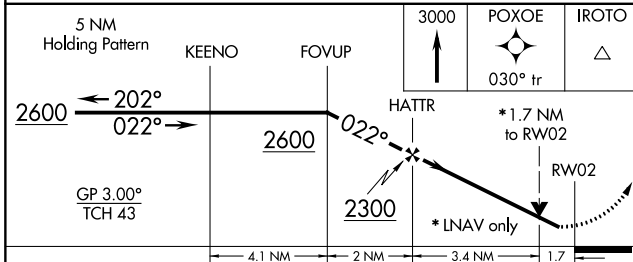
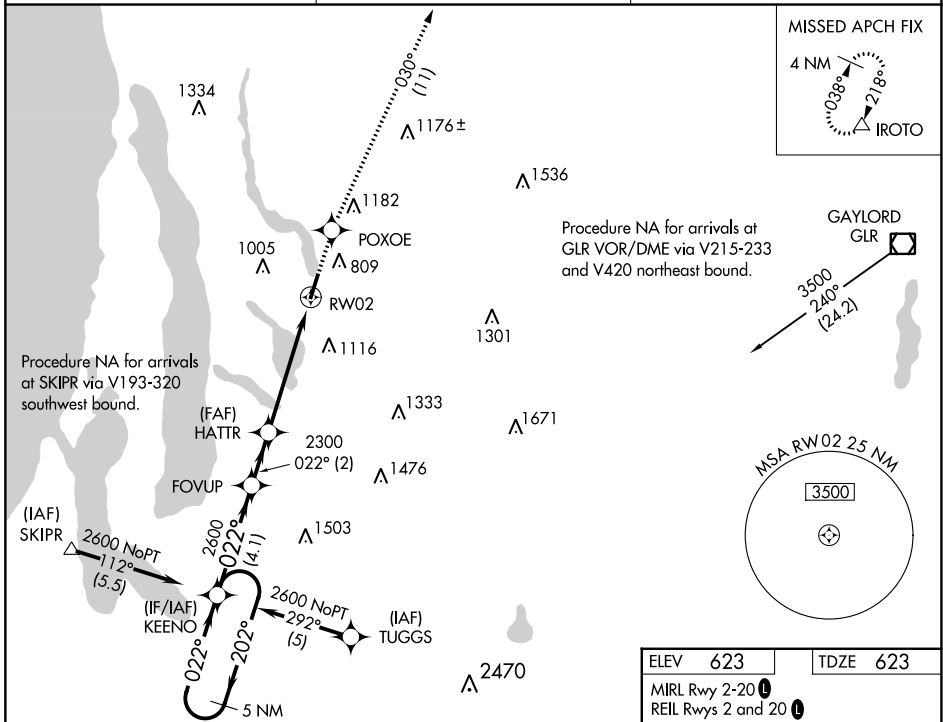
ANTRIM COUNTY (ACB)

RNP APCH-GPS.

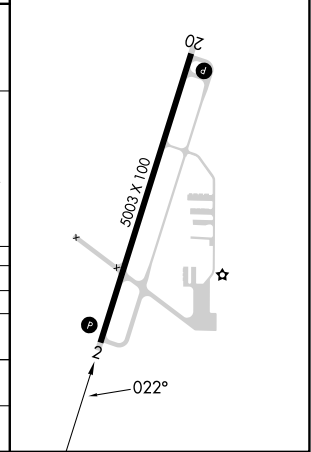
VDP NA when using Cherry Capital altimeter setting. When local altimeter setting not received, use Cherry Capital altimeter setting and increase all DAs/MDAs 60 feet and Circling visibilities Cat B and C ¼ SM.

MISSED APPROACH: Climb to 3000 direct POXOE and via 030° track to IROTO and hold.

AWOS-3P 119.275	MINNEAPOLIS CENTER 132.9 338.3	UNICOM 122.7 (CTAF) 0
---------------------------	--	---------------------------------



ELEV 623	TDZE 623
MIRL Rwy 2-20 0	REIL Rwys 2 and 20 0



CATEGORY	A	B	C	D
LPV DA	908-1 285 (300-1)			
LNAV/VNAV DA	NA			
LNAV MDA	1220-1 597 (600-1)	1220-1½ 597 (600-1½)	1220-1¾ 597 (600-1¾)	
CIRCLING	1360-1 737 (800-1)	1380-1 757 (800-1)	1560-2¾ 937 (1000-2¾)	1640-3 1017 (1100-3)

EC-1, 31 OCT 2024 to 28 NOV 2024

EC-1, 31 OCT 2024 to 28 NOV 2024