

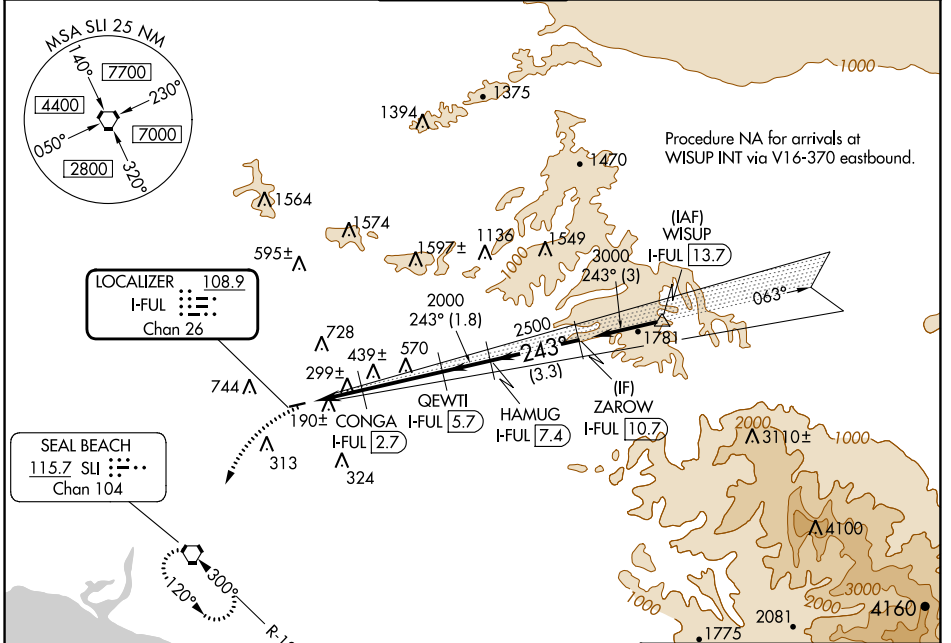
LOC/DME I-FUL 108.9 Chan 26	APP CRS 243°	Rwy Idg 2868 TDZE 95 Apt Elev 96
---	------------------------	---

LOC/DME RWY 24

FULLERTON MUNI (F'UL)

<p>▼ Inoperative table does not apply. ▲ Night landing: Rwy 6 NA. Helicopter visibility reduction below 1 SM NA.</p>	MISSED APPROACH: Climbing left turn to 2600 direct SLI VORTAC and hold.
--	---

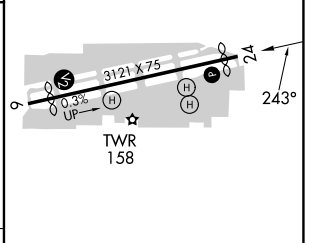
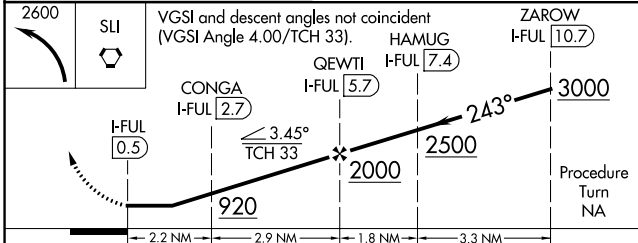
ATIS 125.05	SOCAL APP CON 125.35 316.125	FULLERTON TOWER* 119.1 (CTAF) 0	GND CON 121.8	UNICOM 122.95
-----------------------	--	--	-------------------------	-------------------------



SW-3, 31 OCT 2024 to 28 NOV 2024

SW-3, 31 OCT 2024 to 28 NOV 2024

ELEV 96	TDZE 95
----------------	----------------



CATEGORY	A	B	C	D
S-24	560-1	465 (500-1)		NA
CIRCLING	760-1 664 (700-1)	1060-1½ 964 (1000-1½)		NA

MIRL Rwy 6-24 **0**
REIL Rws 6 and 24 **0**