

RNAV (GPS) RWY 13

APCH CRS	Rwy ldg	9999
135°	TDZE	10
	Arprt Elev	10

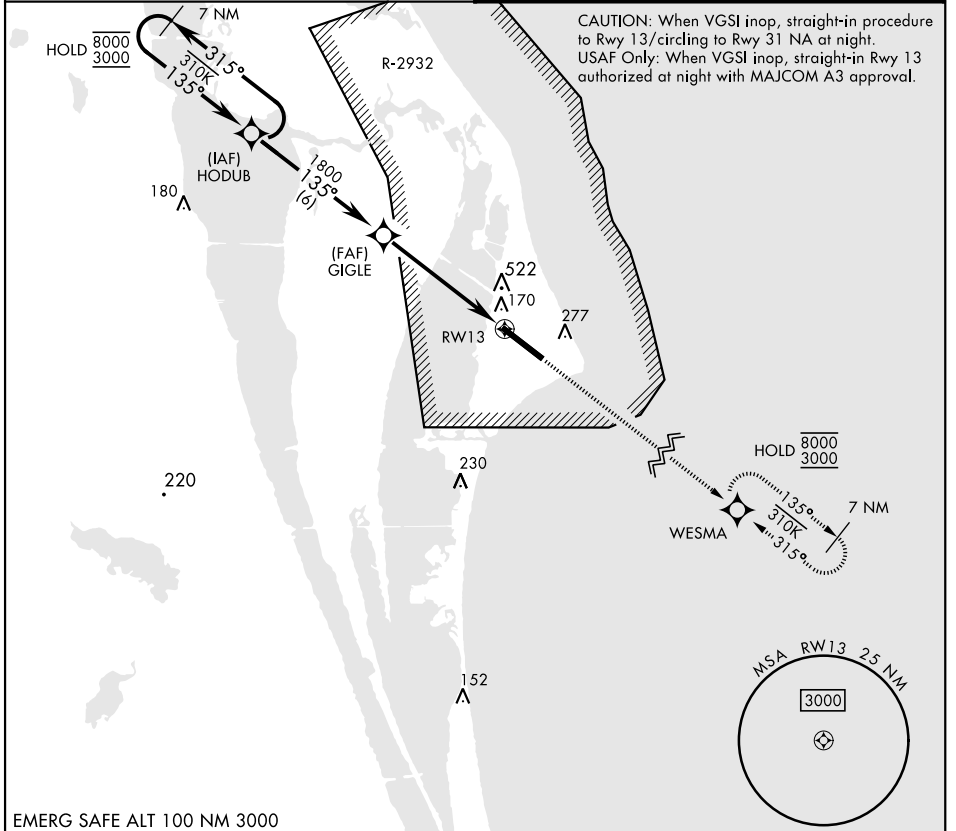
[USAF]

CAPE CANAVERAL SFS SKID STRIP (KXMR)

DME/DME RNP-0.3 NA.
 *Circling not authorized NE of Rwy 13-31.

MISSED APPROACH: Climb to 3000 direct WESMA and hold.

ORLANDO APP CON **134.95 281.425** CAPE TOWER ★ **118.625 143.15 239.05**



EMERG SAFE ALT 100 NM 3000

7 NM Holding Pattern HODUB 8000 / 3000 315° / 135° / 3000	3000 WESMA ELEV 10 TDZE 10	7 NM 135° / 310° / 315° TWR 8000 / 3000 7 NM	CATEGORY A B C D E				
			LNAV MDA 540-1 530 (600-1) 540-1½ 530 (600-1½)				
180 (IAF) HODUB 310° / 135° 7 NM 315° / 135°	1800 (FAF) GIGLE 2.94° TCH 75 5.5 NM RWY 13	235 A	CIRCLING * 580-1 570 (600-1) 600-1½ 590 (600-1½) 620-2 610 (700-2) 640-2¼ 630 (700-2¼)			HIRL Rwy 13-31	
			HIRL Rwy 13-31				

RNAV (GPS) RWY 13

SE-3, 31 OCT 2024 to 28 NOV 2024

SE-3, 31 OCT 2024 to 28 NOV 2024