

APP CRS	Rwy Idg	<b>3509</b>
<b>289°</b>	TDZE	<b>869</b>
	Apt Elev	<b>869</b>

# RNAV (GPS) RWY 32

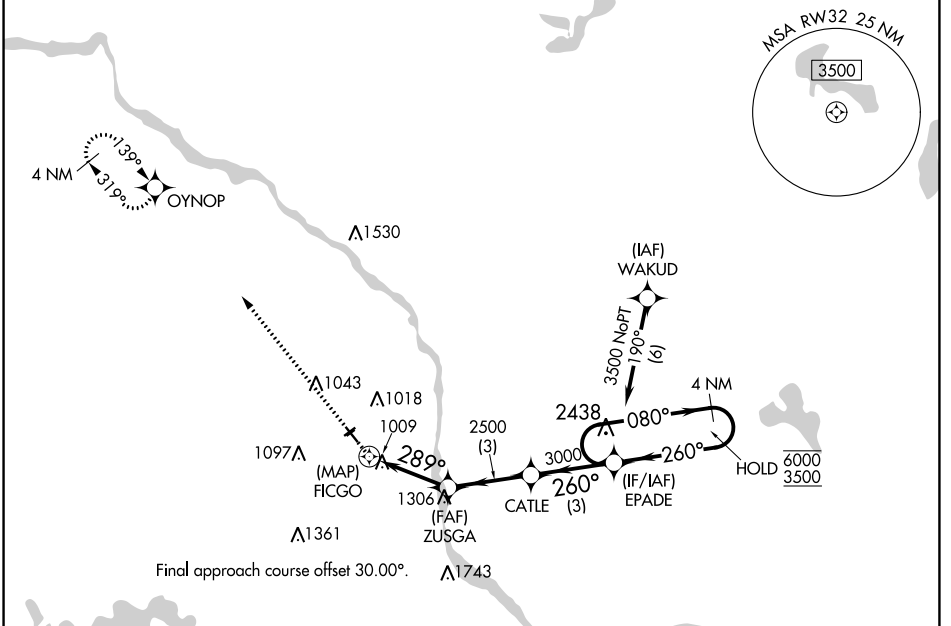
CRYSTAL (MIC)

RNP APCH.

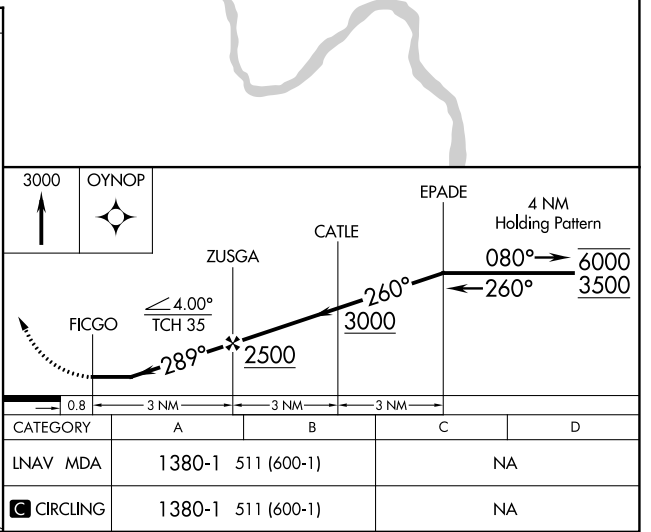
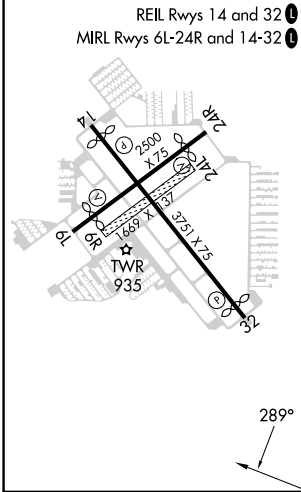
**∇** Circling NA to Rwys 6R and 24L.  
**⚠** Rwy 32 helicopter visibility reduction below 3/4 SM NA.

MISSED APPROACH: Climb to 3000 direct OYNOP and hold.

ATIS <b>124.475</b>	MINNEAPOLIS APP CON <b>126.5 335.65</b>	CRYSTAL TOWER* <b>120.7 (CTAF) 0</b>	GND CON <b>121.6</b>	CLNC DEL <b>121.6</b>	CLNC DEL <b>121.6</b> (When twr closed)	UNICOM <b>122.95</b>
------------------------	--	---	-------------------------	--------------------------	---	-------------------------



ELEV 869	<b>D</b> TDZE 869
----------	-------------------



NC-1, 31 OCT 2024 to 28 NOV 2024

NC-1, 31 OCT 2024 to 28 NOV 2024