

LOC I-ASG 110.9	APP CRS 183°	Rwy Idg 4939
		TDZE 1351
		Apt Elev 1353

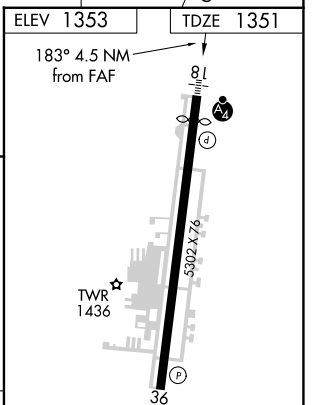
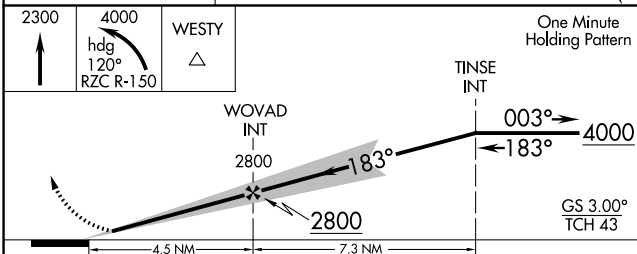
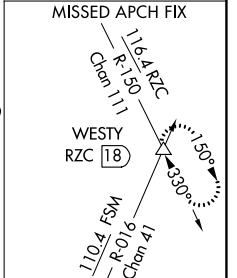
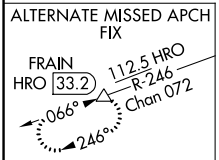
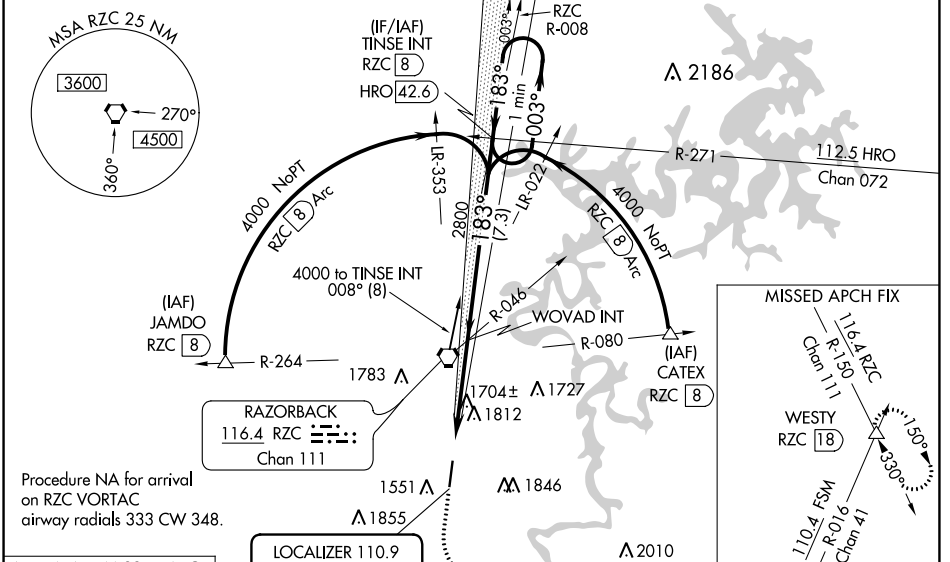
AL-5165 (FAA)

ILS or LOC RWY 18

SPRINGDALE MUNI (ASG)

MAJSAF MISSED APPROACH: Climb to 2300 then climbing left turn to 4000 on heading 120° and RZC VORTAC R-150 to WESTY INT/RZC 18 DME and hold.

AWOS-3 124.675	RAZORBACK APP CON* 126.6 305.2	SPRINGDALE TOWER* 118.2 (CTAF) 0	GND CON 121.6	REIL 18, 36 122.8 0	UNICOM 122.95
--------------------------	--	--	-------------------------	-------------------------------	-------------------------



CATEGORY	A	B	C	D	REIL Rwy 18, 36 0
S-ILS 18		1605-3/4	254 (300-3/4)		HIRL Rwy 18-36 0
S-LOC 18	1960-3/4	609 (700-3/4)	1960-1 1/2	609 (700-1 1/2)	FAF to MAP 4.5 NM
CIRCLING	1960-1 607 (700-1)	2000-1 647 (700-1)	2020-1 1/4 667 (700-1 1/4)	2220-2 3/4 867 (900-2 3/4)	Knots: 60 90 120 150 180 Min:Sec: 4:30 3:00 2:15 1:48 1:30

SC-1, 31 OCT 2024 to 28 NOV 2024

SC-1, 31 OCT 2024 to 28 NOV 2024