

WAAS Ch <b>70312</b> <b>W18A</b>	APP CRS <b>183°</b>	Rwy Idg <b>4939</b> TDZE <b>1351</b> Apt Elev <b>1353</b>
----------------------------------------	------------------------	-----------------------------------------------------------------

# RNAV (GPS) RWY 18

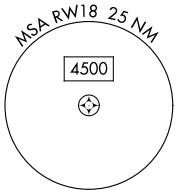
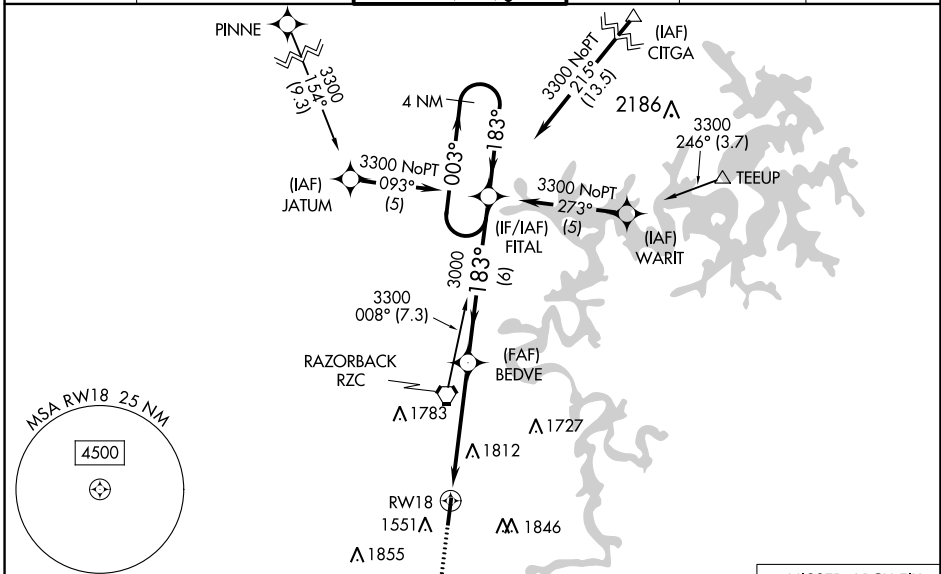
SPRINGDALE MUNI (ASG)

**NA** DME/DME RNP-0.3 NA. Circling NA east of Rwy 18-36. When local altimeter setting not received, use Fayetteville/Drake Fld altimeter setting and increase all DA 39 feet and all MDA 40 feet; increase LPV all Cats and LNAV Cat C/D visibility  $\frac{1}{8}$  mile, Circling Cat C/D visibility  $\frac{1}{4}$  mile. For inoperative MALSF, increase LPV all Cats visibility to 1 mile, LNAV Cat C/D visibility to 2 miles. For inoperative MALSF when using Fayetteville/Drake Fld altimeter setting, increase LPV all Cats visibility to  $1\frac{1}{8}$  mile, LNAV Cat C visibility to  $2\frac{1}{4}$  mile. VDP NA when using Fayetteville/Drake Fld altimeter setting. Helicopter visibility reduction below  $\frac{3}{4}$  SM NA.

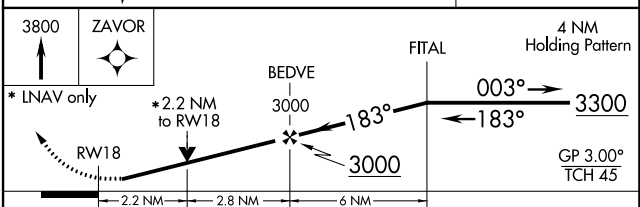
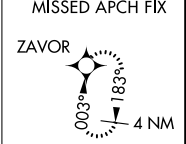
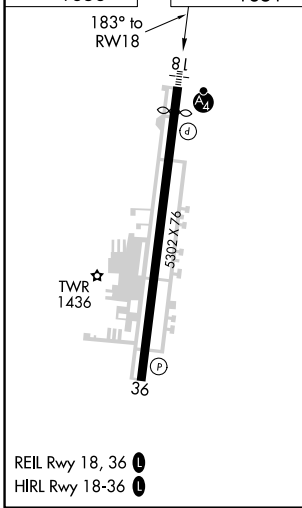
**MALSF**

**MISSED APPROACH:**  
Climb to 3800 direct ZAVOR and hold.

AWOS-3 <b>124.675</b>	RAZORBACK APP CON * <b>126.6 305.2</b>	SPRINGDALE TOWER * <b>118.2 (CTAF)</b>	GND CON <b>121.6</b>	REIL 18, 36 <b>122.8</b>	UNICOM <b>122.95</b>
--------------------------	-------------------------------------------	-------------------------------------------	-------------------------	-----------------------------	-------------------------



ELEV <b>1353</b>	TDZE <b>1351</b>
------------------	------------------



CATEGORY	A	B	C	D
LPV DA		1642- $\frac{3}{4}$ 291 (300- $\frac{3}{4}$ )		
LNAV/VNAV DA	NA			
LNAV MDA	2080- $\frac{3}{4}$ 729 (800- $\frac{3}{4}$ )	2080-1 729 (800-1)	2080-1 $\frac{7}{8}$ 729 (800-1 $\frac{7}{8}$ )	2220-2 $\frac{3}{4}$ 867 (900-2 $\frac{3}{4}$ )
<b>C</b> CIRCLING	2080-1 727 (800-1)		2080-2 727 (800-2)	

SC-1, 31 OCT 2024 to 28 NOV 2024

SC-1, 31 OCT 2024 to 28 NOV 2024