

WAAS Ch <b>77512</b> <b>W36A</b>	APP CRS <b>003°</b>	Rwy Idg <b>5302</b> TDZE <b>1353</b> Apt Elev <b>1353</b>
--	------------------------	---

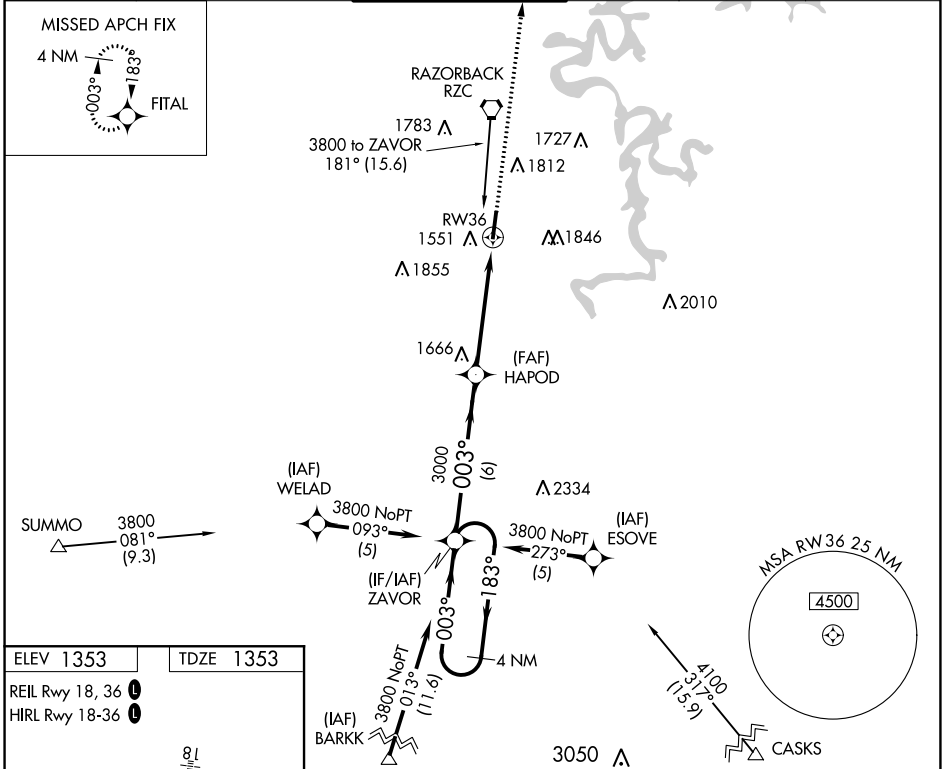
# RNAV (GPS) RWY 36

SPRINGDALE MUNI (ASG)

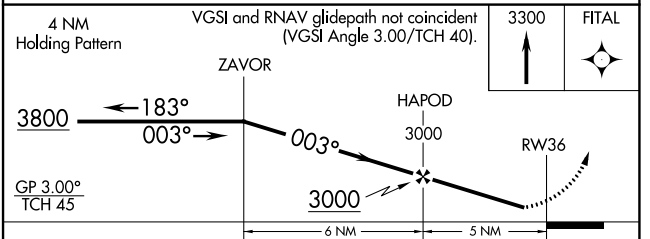
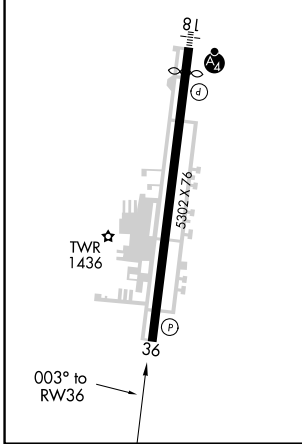
**⚠** DME/DME RNP-0.3 NA. Circling NA east of Rwy 18-36. When local altimeter setting not received, use Fayetteville/Drake Fld altimeter setting and increase all DA 39 feet and all MDA 40 feet; increase visibility LNAV Cat C/D 1/8 mile and Circling Cat C/D 1/4 mile. Helicopter visibility reduction below 3/4 SM NA.

**⚠** MISSED APPROACH: Climb to 3300 direct FITAL and hold.

AWOS-3 <b>124.675</b>	RAZORBACK APP CON* <b>126.6 305.2</b>	<b>SPRINGDALE TOWER*</b> <b>118.2 (CTAF) 0</b>	GND CON <b>121.6</b>	REIL 18, 36 <b>122.8 0</b>	UNICOM <b>122.95</b>
--------------------------	--	---	-------------------------	-------------------------------	-------------------------



ELEV <b>1353</b>	TDZE <b>1353</b>
REIL Rwy 18, 36 <b>0</b>	
HIRL Rwy 18-36 <b>0</b>	



CATEGORY	A	B	C	D
LPV DA	1603-1 250 (300-1)			
LNAV MDA	1960-1	607 (700-1)	1960-1¾	607 (700-1¾)
<b>C</b> CIRCLING	1960-1 607 (700-1)	2000-1 647 (700-1)	2020-1¾ 667 (700-1¾)	2220-2¾ 867 (900-2¾)

SC-1, 31 OCT 2024 to 28 NOV 2024

SC-1, 31 OCT 2024 to 28 NOV 2024