

WAAS CH 56412 W17A	APP CRS 174°	Rwy Idg 6500 TDZE 845 Apt Elev 846
--	------------------------	---

RNAV (GPS) RWY 17

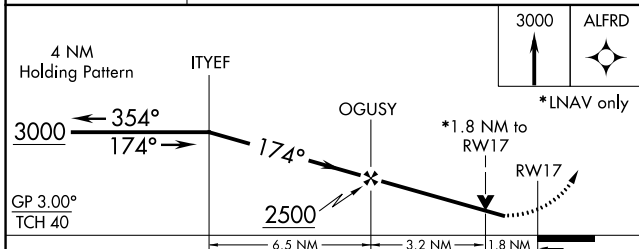
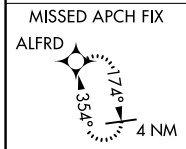
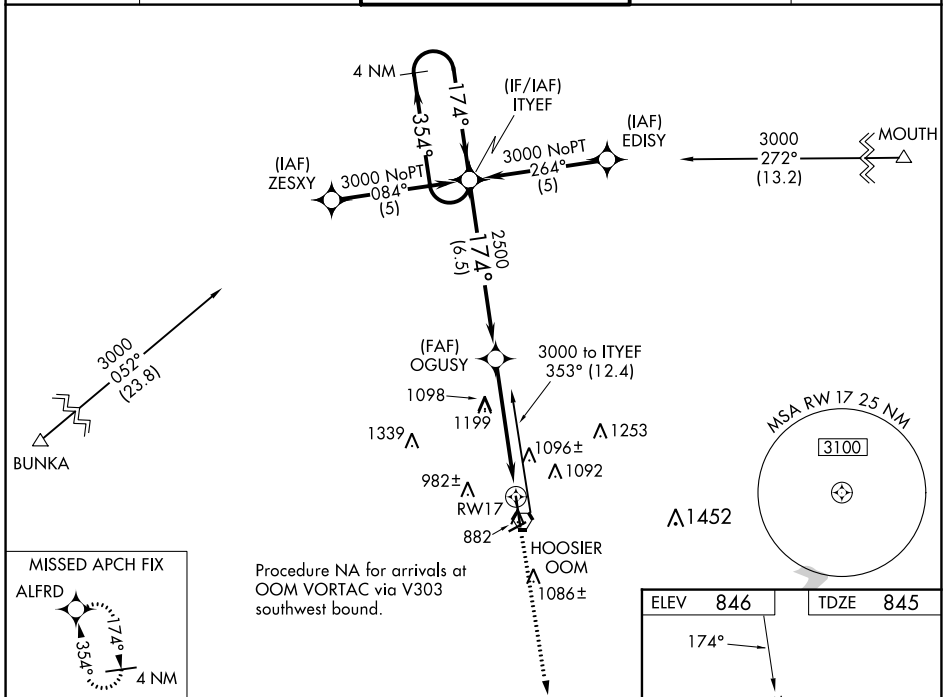
MONROE COUNTY (BMG)

RNP APCH.

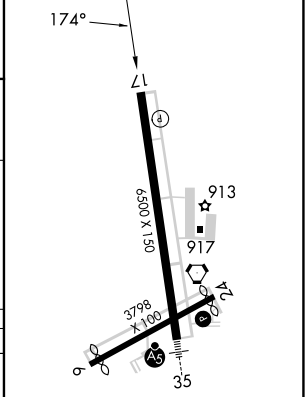
⚠ For uncompensated Baro-VNAV systems, LNAV/VNAV NA below -16°C (4°F) or above 47°C (116°F). Rwy 17 helicopter visibility reduction below ¾ SM NA. When local altimeter setting not received, use Terre Haute Rgnl altimeter setting and increase all DA 121 feet and all MDA 140 feet. Increase LPV all Cats, LNAV/VNAV all Cats, LNAV Cat C/D visibility ½ mile.

MISSED APPROACH: Climb to 3000 direct ALFRD and hold.

ASOS 134.525	HULMAN APP CON 128.025 339.8	BLOOMINGTON TOWER * 120.775 (CTAF) 0	GND CON 121.9	UNICOM 122.95
------------------------	--	--	-------------------------	-------------------------



ELEV 846	TDZE 845
-----------------	-----------------



CATEGORY	A	B	C	D
LPV DA	1229-1¼ 384 (400-1¼)			
LNAV/VNAV DA	1404-2 559 (600-2)			
LNAV MDA	1460-1 614 (700-1)	1460-1¾ 614 (700-1¾)		1460-2 614 (700-2)

MIRL Rwy 6-24 0
HIRL Rwy 17-35 0
REL Rwy 17 0

EC-2, 31 OCT 2024 to 28 NOV 2024

EC-2, 31 OCT 2024 to 28 NOV 2024