



LOC I-BRD 109.9	APP CRS 231°	Rwy ldg 6512
		TDZE 1224
		Apt Elev 1232

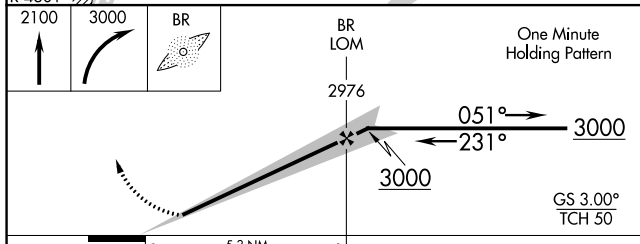
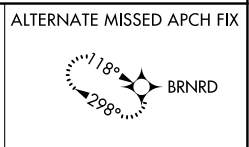
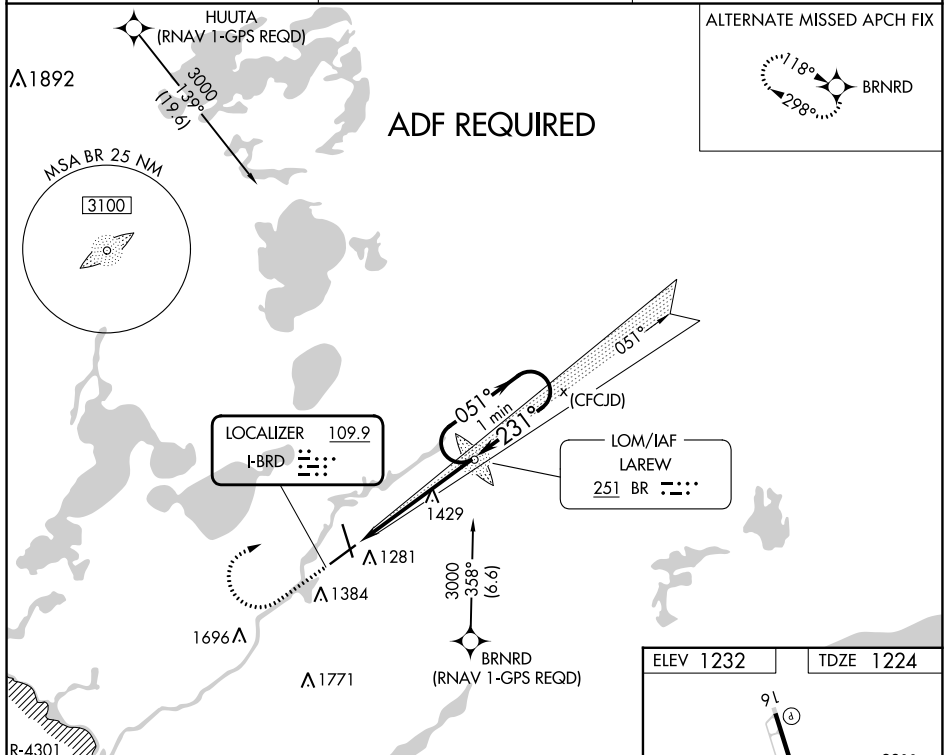
ILS or LOC RWY 23

BRainerd LAKES RGNL (BRD)


ADF REQUIRED. When local altimeter setting not received, use Aitkin altimeter setting and increase all DAs 52 feet and all MDAs 60 feet. Increase S-LOC Cat C visibility to 1 SM and Circling Cat D visibility to 2¼ SM.


MALS  MISSED APPROACH: Climb to 2100 then climbing right turn to 3000 direct LAREW LOM and hold.

ASOS 126.775	MINNEAPOLIS CENTER 118.05 239.0	UNICOM 122.7 (CTAF) 
------------------------	---	---




ELEV 1232	TDZE 1224
-----------	-----------

HIRL Rwy 5-23 and 16-34 

REIL Rwy 5 and 16 

FAF to MAP 5.3 NM

Knots	60	90	120	150	180
Min:Sec	5:18	3:32	2:39	2:07	1:46

CATEGORY	A	B	C	D
S-ILS 23	1424-½ 200 (200-½)			
S-LOC 23	1680-½ 456 (500-½)	1680-¾ 456 (500-¾)	1680-1 456 (500-1)	
 CIRCLING	1760-1 528 (600-1)	1760-1½ 528 (600-1½)	1860-2 628 (700-2)	

NC-1, 31 OCT 2024 to 28 NOV 2024

NC-1, 31 OCT 2024 to 28 NOV 2024