

WAAS CH <b>40213</b> <b>W08A</b>	APP CRS <b>087°</b>	Rwy Idg TDZE Apt Elev	<b>5001</b> <b>786</b> <b>794</b>
--	------------------------	-----------------------------	---

# RNAV (GPS) RWY 8L

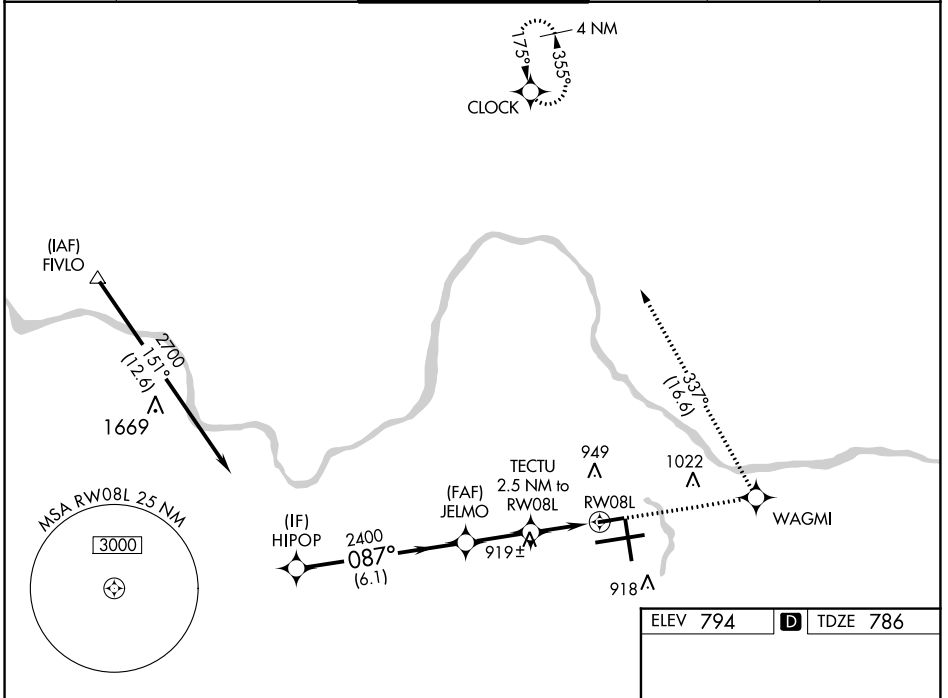
GERALD R FORD INTL (G.R.)

RNP APCH.

**T** **A** Rwy 8L helicopter visibility reduction below 3/4 SM NA.  
For uncompensated Baro-VNAV systems, LNAV/VNAV NA below -16°C or above 54°C.

MISSED APPROACH: Climb to 3000 direct WAGMI and left turn on track 337° to CLOCK and hold.

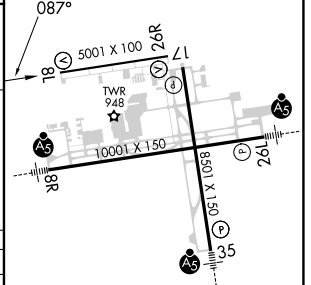
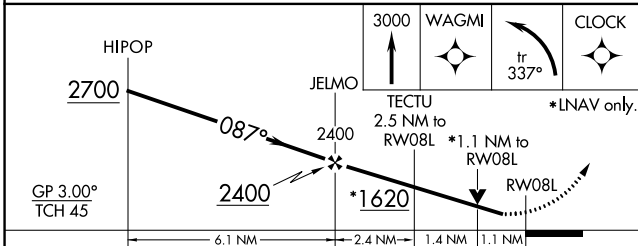
ATIS <b>118.725</b>	GREAT LAKES APP CON * <b>128.4 257.6</b>	GRAND RAPIDS TOWER * <b>135.65 (CTAF) 0 339.8</b>	GND CON <b>121.8</b>	CLNC DEL <b>119.3</b>	UNICOM <b>122.95</b>
------------------------	---	--	-------------------------	--------------------------	-------------------------



EC-1, 31 OCT 2024 to 28 NOV 2024

EC-1, 31 OCT 2024 to 28 NOV 2024

ELEV 794	<b>D</b> TDZE 786
----------	-------------------



CATEGORY	A	B	C	D
LPV DA	1036-1 250 (300-1)			
LNAV/VNAV DA	1203-1 1/2 417 (500-1 1/2)			
LNAV MDA	1180-1 394 (400-1)	1180-1 1/8 394 (400-1 1/8)	1180-1 1/4 394 (400-1 1/4)	
<b>C</b> CIRCLING	1260-1 466 (500-1)	1340-1 1/2 546 (600-1 1/2)	1360-2 566 (600-2)	

MIRL Rwy 8L-26R **1**  
REIL Rws 8L, 17 and 26R **1**  
HIRL Rws 8R-26L and 17-35 **1**