

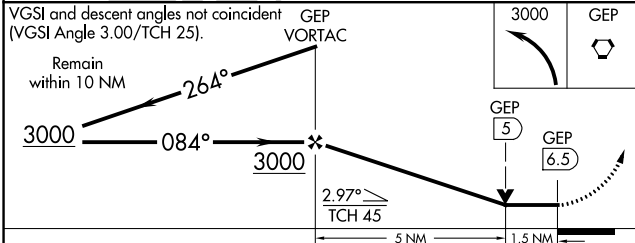
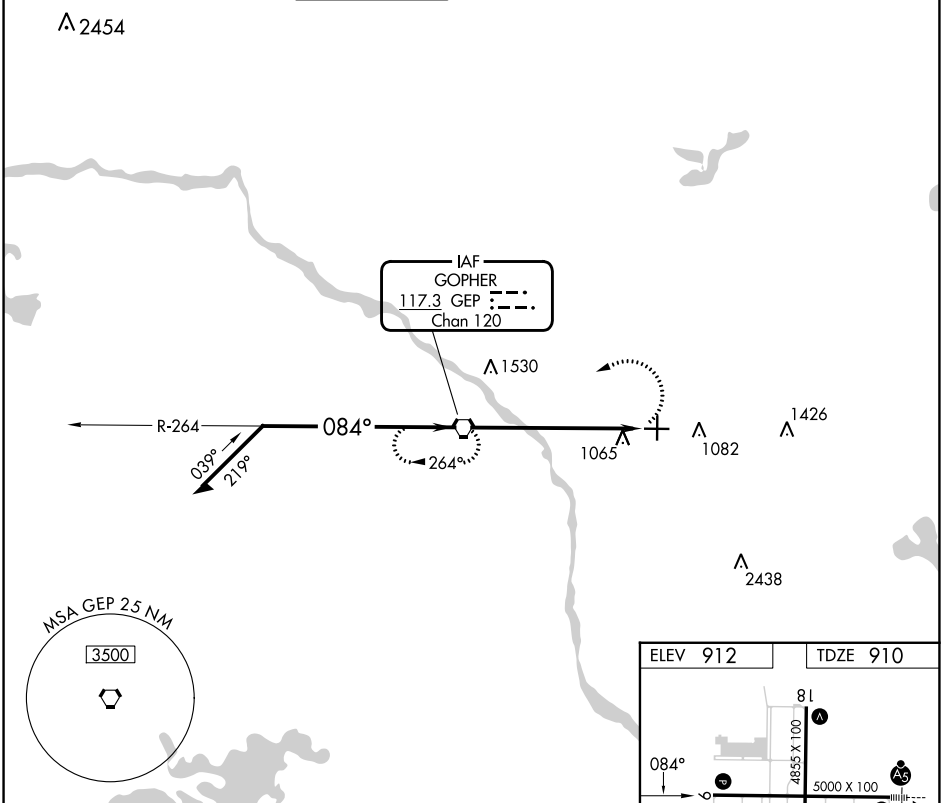
VORTAC GEP <b>117.3</b> Chan 120	APP CRS <b>084°</b>	Rwy Idg TDZE Apt Elev	<b>5000</b> <b>910</b> <b>912</b>
--	------------------------	-----------------------------	---

**VOR RWY 9**  
ANOKA COUNTY/BLAINE (JANES FLD) (A.N.E.)

When local altimeter setting not received, use Crystal altimeter setting: increase all MDA 40 feet and increase S-9 visibility Cat C/D 1/8 SM and Circling Cat D 1/4 SM. VDP NA when using Crystal altimeter setting.

MISSED APPROACH: Climbing left turn to 3000 direct GEP VORTAC and hold.

ATIS <b>120.625</b>	MINNEAPOLIS APP CON <b>126.5 335.65</b>	ANOKA TOWER* <b>132.4</b> (CTAF) <b>0</b>	GND CON <b>121.85</b>	CLNC DEL <b>121.3</b>	CLNC DEL <b>121.85</b> (When twr closed)	UNICOM <b>122.95</b>
------------------------	--	--	--------------------------	--------------------------	--	-------------------------



ELEV 912	TDZE 910
----------	----------

HIRL Rwy 9-27 **0**  
MIRL Rwy 18-36 **0**  
REIL Rws 9, 18 and 36 **0**

FAF to MAP 6.5 NM

Knots	60	90	120	150	180
Min:Sec	6:30	4:20	3:15	2:36	2:10

CATEGORY	A	B	C	D
S-9	1400-1	490 (500-1)	1400-1 3/8	490 (500-1 1/8)
<b>C</b> CIRCLING	1400-1	488 (500-1)	1460-1 1/2 548 (600-1 1/2)	1580-2 668 (700-2)

NC-1, 31 OCT 2024 to 28 NOV 2024

NC-1, 31 OCT 2024 to 28 NOV 2024