

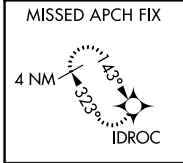
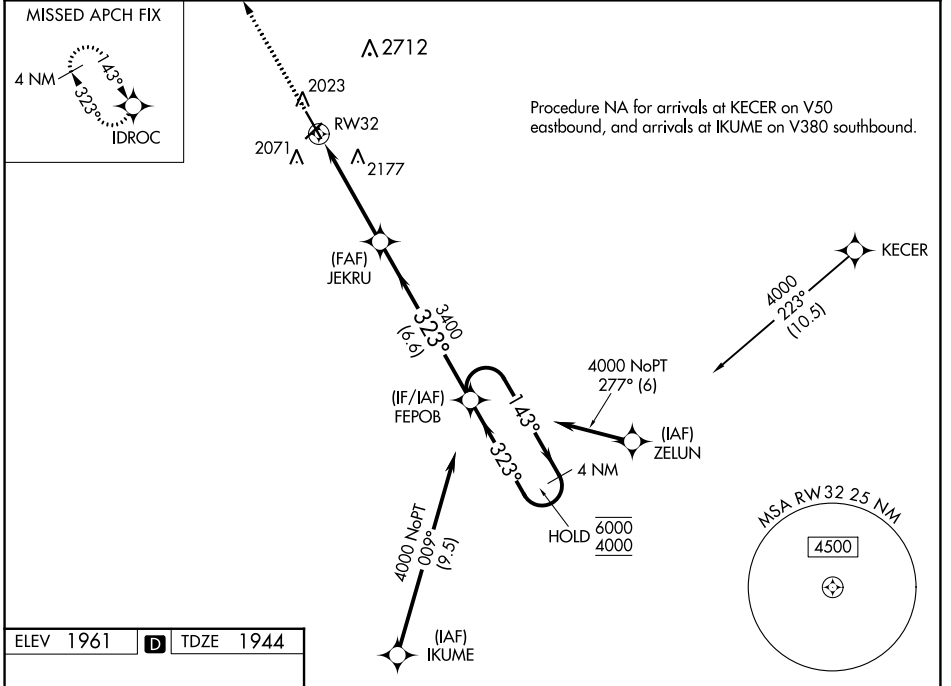
WAAS CH 63223 W32A	APP CRS 323°	Rwy Idg 5500 TDZE 1944 Apt Elev 1961
--	------------------------	---

RNAV (GPS) RWY 32

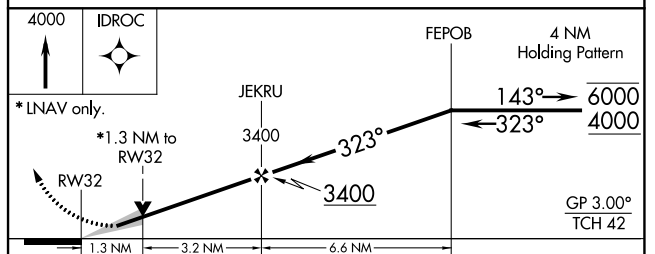
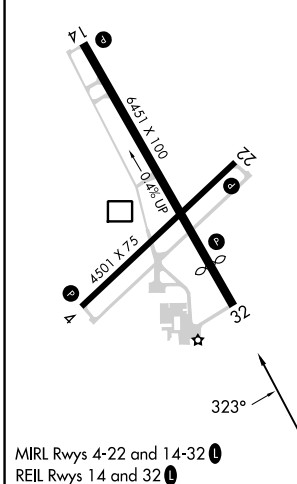
HASTINGS MUNI (HSI)

RNP APCH.	MISSED APPROACH: Climb to 4000 direct IDROC and hold.
<p>⚠ For uncompensated Baro-VNAV systems, LNAV/VNAV NA below -18°C or above 54°C. Circling NA for Cat D east of Rwy 14-32.</p>	

ASOS 120.525	MINNEAPOLIS CENTER 119.4 278.8	UNICOM 122.8 (CTAF) 1
------------------------	--	---------------------------------



ELEV 1961	D	TDZE 1944
-----------	----------	-----------



CATEGORY	A	B	C	D
LPV DA	2194-7/8		250 (300-7/8)	
LNAV/VNAV DA	2386-1 3/8		442 (500-1 3/8)	
LNAV MDA	2380-1 436 (500-1)		2380-1 1/4 436 (500-1 1/4)	
C CIRCLING	2380-1 419 (500-1)	2540-1 579 (600-1)	2540-1 1/2 579 (600-1 1/2)	2540-2 579 (600-2)

NC-2, 31 OCT 2024 to 28 NOV 2024

NC-2, 31 OCT 2024 to 28 NOV 2024