

WAAS CH 66023 W04A	APP CRS 040°	Rwy Idg 4501 TDZE 1944 Apt Elev 1961
--	------------------------	---

RNAV (GPS) RWY 4

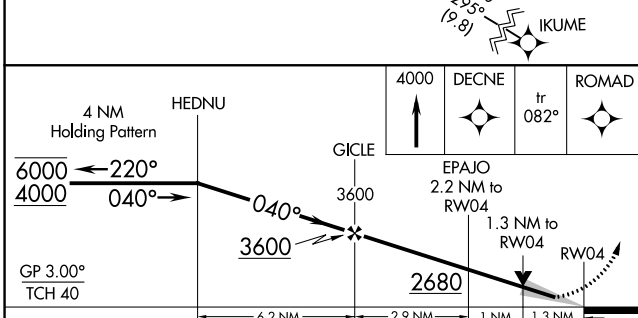
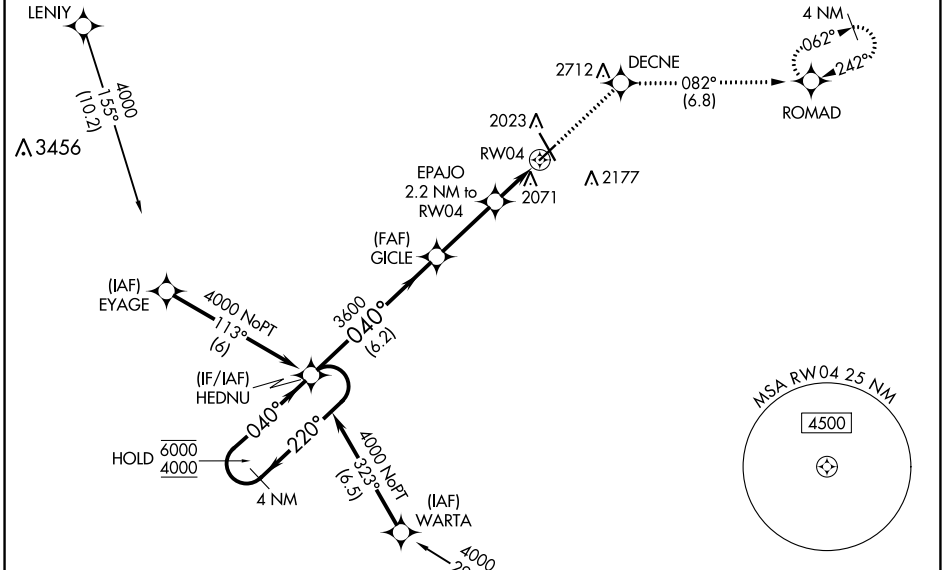
HASTINGS MUNI (HSI)

RNP APCH - GPS.

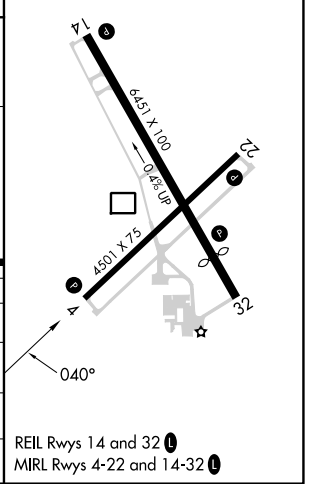
⚠ Baro-VNAV and VDP NA when using GRI altimeter setting. For uncompensated Baro-VNAV systems, LNAV/VNAV NA below -24°C or above 54°C. When local altimeter setting not received, use GRI altimeter setting and increase LPV DA to 2262 feet and all visibilities $\frac{1}{8}$ SM. Increase LNAV/VNAV DA to 2414 feet and all visibilities $\frac{1}{4}$ SM. Increase all MDAs 80 feet and LNAV visibility Cat C $\frac{1}{8}$ SM, and Circling visibility Cat C $\frac{1}{4}$ SM.

MISSED APPROACH: Climb to 4000 direct DECNE and on track 082° to ROMAD and hold.

ASOS 120.525	MINNEAPOLIS CENTER 119.4 278.8	UNICOM 122.8 (CTAF) 1
------------------------	--	---------------------------------



ELEV 1961	D TDZE 1944
-----------	--------------------



CATEGORY	A	B	C	D
LPV DA	2194-1 250 (300-1)			NA
LNAV/VNAV DA	2346-1 $\frac{1}{8}$ 402 (400-1 $\frac{1}{8}$)			NA
LNAV MDA	2380-1 436 (500-1)		2380-1 $\frac{1}{4}$ 436 (500-1 $\frac{1}{4}$)	NA
CIRCLING	2380-1 419 (500-1)	2540-1 579 (600-1)	2540-1 $\frac{1}{2}$ 579 (600-1 $\frac{1}{2}$)	NA

NC-2, 31 OCT 2024 to 28 NOV 2024

NC-2, 31 OCT 2024 to 28 NOV 2024