

WAAS CH <b>70624</b> <b>W26A</b>	APP CRS <b>259°</b>	Rwy Idg TDZE Apt Elev	<b>4151</b> <b>1005</b> <b>1014</b>
--	------------------------	-----------------------------	---

# RNAV (GPS) RWY 26L

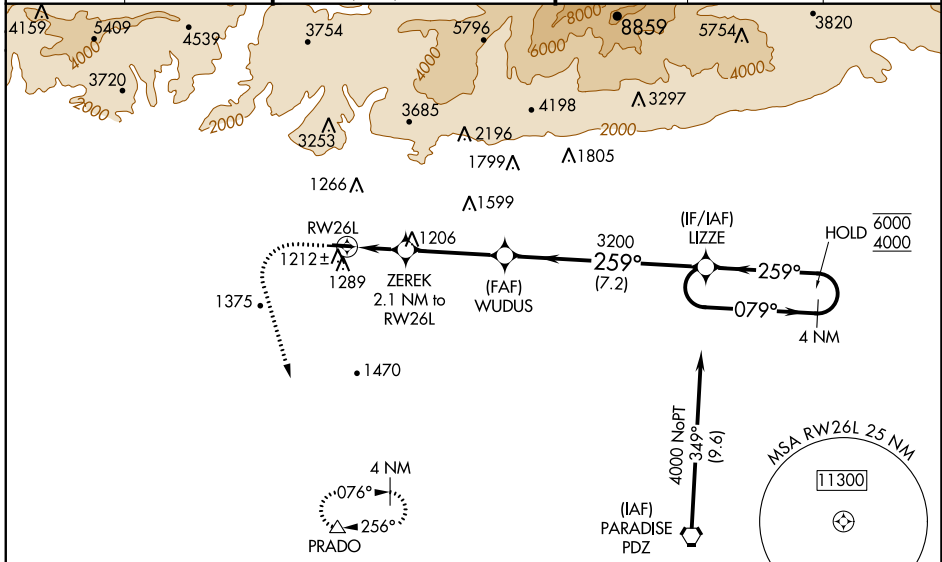
BRACKETT FLD (POC)

RNP APCH.

Baro-VNAV and VDP NA when using Ontario altimeter setting. Rwy 26L helicopter visibility reduction below 3/4 SM NA. For uncompensated Baro-VNAV systems, LNAV/VNAV NA below -17°C or above 54°C. When local altimeter setting not received, use Ontario Intl altimeter setting and increase all DA 32 feet and all MDA 40 feet, increase LPV and LNAV/VNAV all Cats visibility 1/8 SM. Circling NA for Cat C north of Rwy 8L-26R. Circling to Rwy 8L NA at night. When Circling to Rwy 8R at night, operational VGSi required, remain on or above VGSi glidepath until threshold.

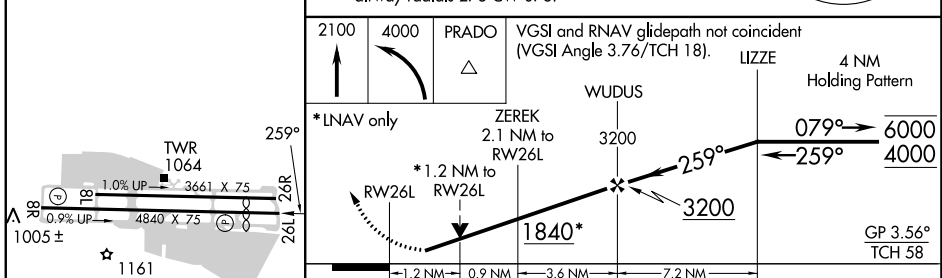
MISSED APPROACH: Climb to 2100 then climbing left turn to 4000 direct PRADO and hold.

ATIS <b>124.4</b>	SOCAL APP CON <b>125.5 349.0</b>	BRACKETT TOWER★ RWY 8R/26L <b>118.2 (CTAF)</b>	RWY 8L/26R <b>133.3</b>	GND CON <b>125.0</b>	CLNC DEL <b>121.875</b>	UNICOM <b>122.95</b>
----------------------	-------------------------------------	--	----------------------------	-------------------------	----------------------------	-------------------------



ELEV 1014	TDZE 1005
-----------	-----------

Procedure NA for arrivals on PDZ VORTAC airway radials 278 CW 078.



CATEGORY	A	B	C	D
LPV DA	1305-7/8	300 (300-7/8)		NA
LNAV/VNAV DA	1444-1 1/4	439 (500-1 1/4)		NA
LNAV MDA	1500-1	495 (500-1)	1500-1 3/8 495 (500-1 3/8)	NA
CIRCLING	1680-1	666 (700-1)	1760-2 1/4 746 (800-2 1/4)	NA

REIL Rwy 8R and 26L  
MIRL Rwy 8R-26L

SW-3, 31 OCT 2024 to 28 NOV 2024

SW-3, 31 OCT 2024 to 28 NOV 2024