

WAAS CH <b>53408</b> <b>W18A</b>	APP CRS <b>181°</b>	Rwy Idg TDZE Apt Elev	<b>4016</b> <b>16</b> <b>16</b>
--	------------------------	-----------------------------	---------------------------------------

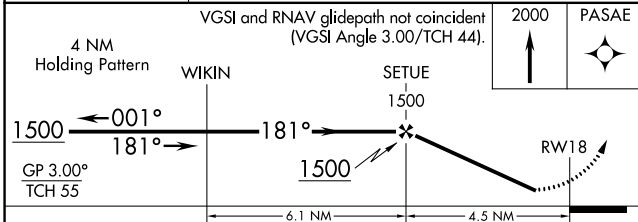
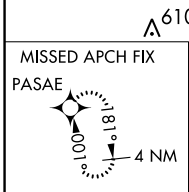
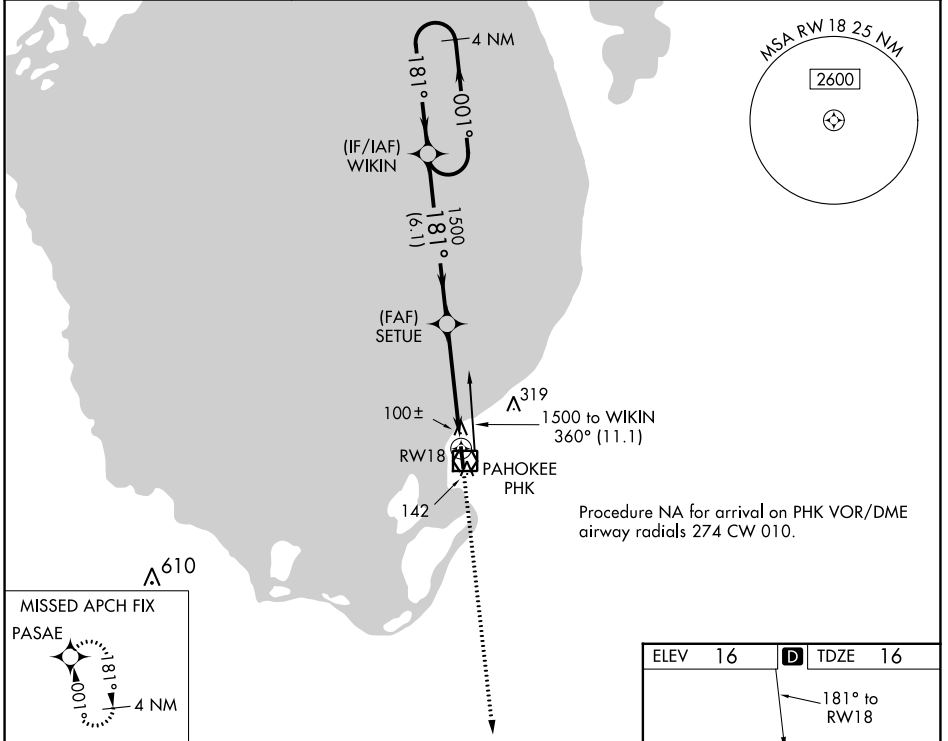
# RNAV (GPS) RWY 18

PALM BEACH COUNTY GLADES (PHK)

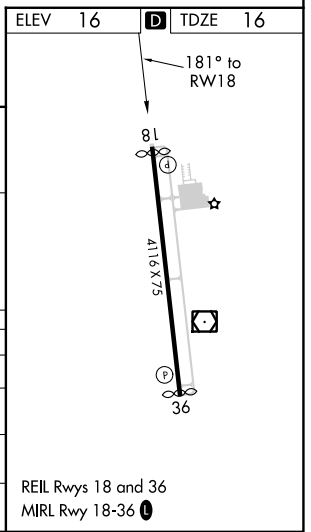
**⚠** Baro-VNAV NA. Rwy 18 helicopter visibility reduction below  $\frac{3}{4}$  SM NA.  
**⚠** DME/DME RNP-0.3 NA. Use Palm Beach Intl altimeter setting, when not received procedure NA.

MISSED APPROACH: Climb to 2000 direct PASAE and hold.

PBI ASOS <b>123.75</b>	PALM BEACH APP CON <b>125.2 317.4</b>	UNICOM <b>122.8 (CTAF) 0</b>
---------------------------	--	---------------------------------



CATEGORY	A	B	C	D
LPV DA	358-1 $\frac{1}{8}$ 342 (400-1 $\frac{1}{8}$ )			
LNAV/VNAV DA	342-1 326 (400-1)			
LNAV MDA	440-1 424 (500-1)		440-1 $\frac{1}{4}$ 424 (500-1 $\frac{1}{4}$ )	
<b>C</b> CIRCLING	580-1 564 (600-1)		760-2 $\frac{1}{4}$ 744 (800-2 $\frac{1}{4}$ )	



SE-3, 31 OCT 2024 to 28 NOV 2024

SE-3, 31 OCT 2024 to 28 NOV 2024

REIL Rwy 18 and 36  
MIRL Rwy 18-36 **0**