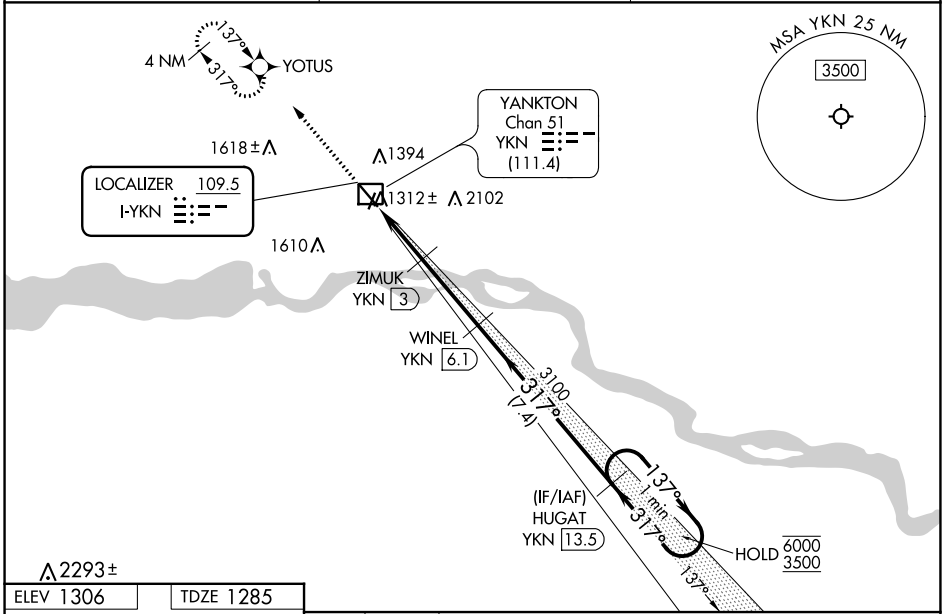


LOC I-YKN 109.5	APP CRS 317°	Rwy Idg TDZE Apt Elev	6094 1285 1306
---------------------------	------------------------	-----------------------------	---

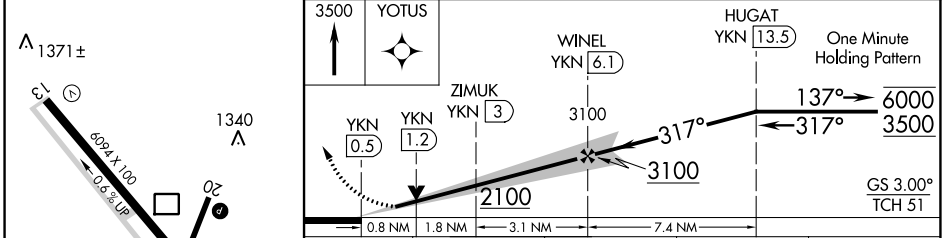
ILS or LOC RWY 31

CHAN GURNEY MUNI (YKN)

RNP APCH - GPS.		MALSR 	MISSED APPROACH: Climb to 3500 direct YOTUS and hold, continue climb-in-hold to 3500.
DME required for LOC only. RADAR required for procedure entry.			
<p> Circling NA east of Rwy 20 and northeast of Rwy 31. DME from YKN DME.</p> <p> DME use requires simultaneous reception of I-YKN and YKN DME. For inop ALS, increase S-LOC 31 Cat C/D visibility to 2 1/2 SM and increase ZIMUK fix minimums S-LOC 31 Cat C/D visibility to 7/8 SM. * DME from YKN DME.</p>			
AWOS-3PT 119.05	MINNEAPOLIS CENTER 125,025 235,625	UNICOM 122.8 (CTAF)	



ELEV 1306	TDZE 1285
-----------	-----------



CATEGORY	A	B	C	D
S-ILS 31	1485-1/2 200 (200-1/2)			
S-LOC 31	2100-1/2 815 (800-1/2)	2100-3/4 815 (800-3/4)	2100-1 7/8	815 (800-1 7/8)
CIRCLING	2100-1 794 (800-1)	2100-1 1/4 794 (800-1 1/4)	2100-2 1/2	794 (800-2 1/2)
ZIMUK FIX MINIMUMS*				
S-LOC 31	1560-1/2		275 (300-1/2)	
CIRCLING	1760-1 454 (500-1)	1780-1 474 (500-1)	1980-2 674 (700-2)	1980-2 1/4 674 (700-2 1/4)

REIL Rwy 13
HIRL Rwy 13-31
MIRL Rwy 2-20

NC-1, 31 OCT 2024 to 28 NOV 2024

NC-1, 31 OCT 2024 to 28 NOV 2024