

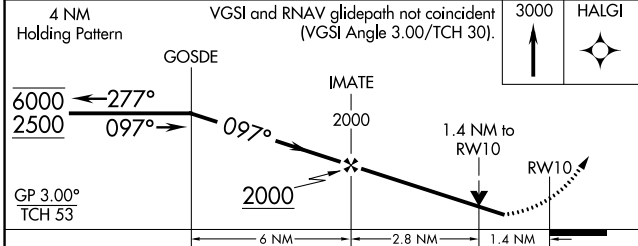
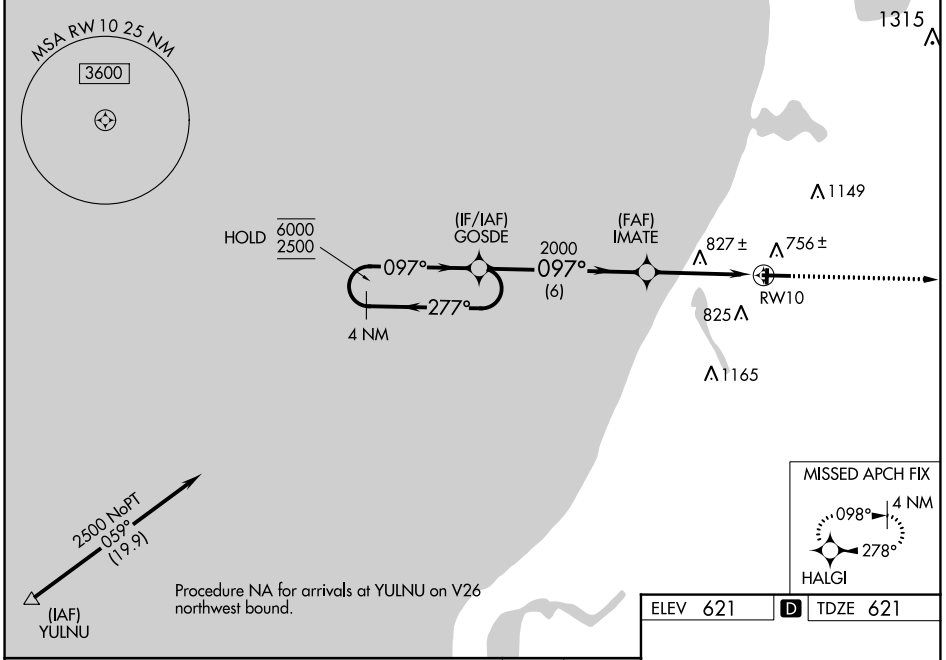
WAAS CH 60933 W10A	APP CRS 097°	Rwy Idg 5501 TDZE 621 Apt Elev 621
--	------------------------	---

RNAV (GPS) RWY 10

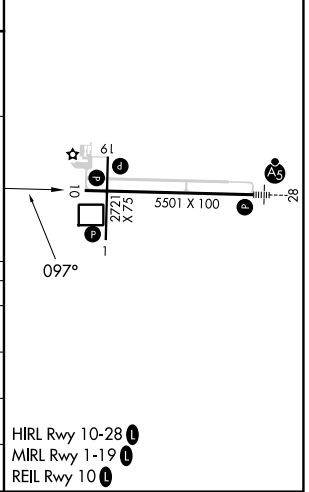
MANISTEE COUNTY/BLACKER (MBL)

RNP APCH - GPS.		MISSED APPROACH: Climb to 3000 direct HALGI and hold.
<p>⚠ Circling Rwy 1, 19 NA at night. Rwy 10 helicopter visibility reduction below $\frac{3}{4}$ SM NA. For uncompensated Baro-VNAV systems, LNAV/VNAV NA below -16°C or above 54°C.</p>		

AWOS-3PT 118.825	MINNEAPOLIS CENTER 120.85 322.35	UNICOM 122.8 (CTAF) U
----------------------------	--	--



ELEV 621	D TDZE 621
----------	-------------------



CATEGORY	A	B	C	D
LPV DA	890- $\frac{7}{8}$		269 (300- $\frac{7}{8}$)	
LNAV/VNAV DA	1091-1 $\frac{3}{8}$		470 (500-1 $\frac{3}{8}$)	
LNAV MDA	1080-1	459 (500-1)	1080-1 $\frac{3}{8}$	459 (500-1 $\frac{3}{8}$)
CIRCLING	1160-1 539 (600-1)	1220-1 599 (600-1)	1400-2 $\frac{1}{4}$ 779 (800-2 $\frac{1}{4}$)	1500-2 $\frac{3}{4}$ 879 (900-2 $\frac{3}{4}$)

- HIRL Rwy 10-28 **U**
- MIRL Rwy 1-19 **U**
- REIL Rwy 10 **U**

EC-1, 31 OCT 2024 to 28 NOV 2024

EC-1, 31 OCT 2024 to 28 NOV 2024