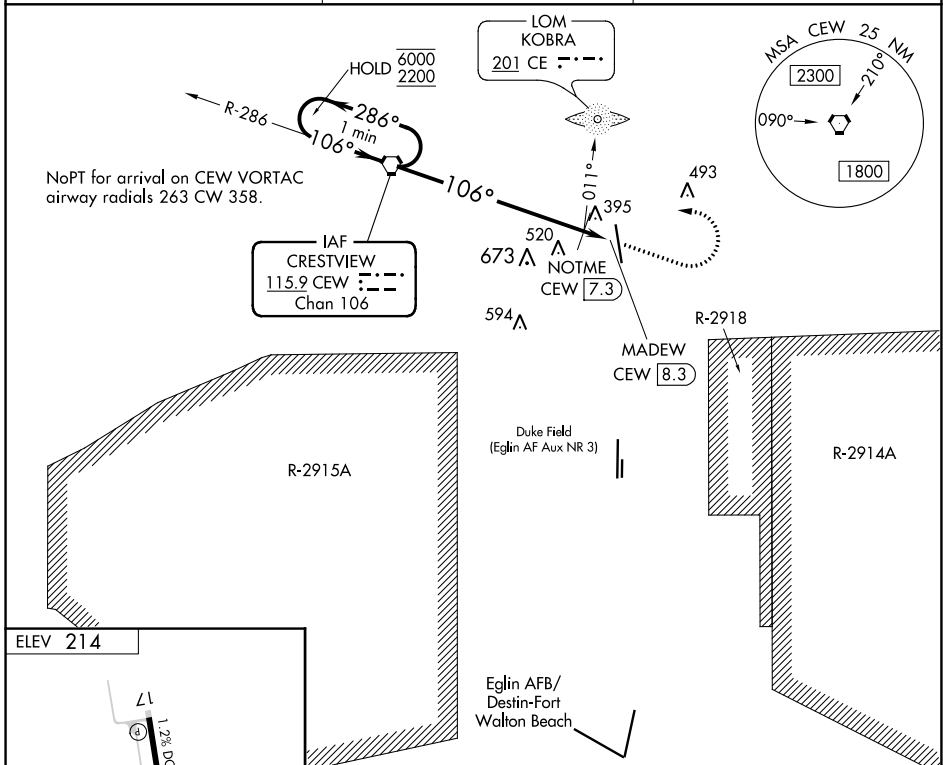


VORTAC CEW 115.9 Chan 106	APP CRS 106°	Rwy ldg TDZE Apt Elev N/A N/A 214
---	------------------------	---

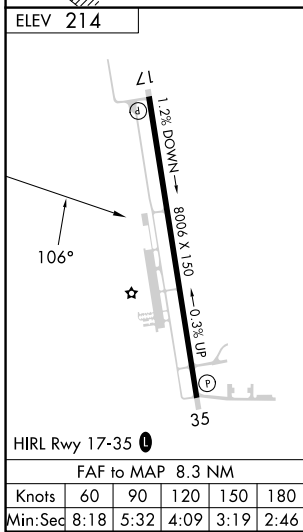
VOR-A
BOB SIKES(CEW)

<p>⚠ Circling NA for Cat D west of Rwy 17-35. When local altimeter setting not received, use Eglin AFB altimeter setting and increase all MDA 60 feet and increase Circling Cat C/D visibility ¼ SM.</p>	<p>MISSED APPROACH: Climb to 1200 then climbing left turn to 2200 direct CEW VORTAC and hold.</p>	
<p>ASOS 119.275</p>	<p>EGLIN APP CON 124.05 284.65</p>	<p>UNICOM 122.95 (CTAF)</p>



SE-3, 31 OCT 2024 to 28 NOV 2024

SE-3, 31 OCT 2024 to 28 NOV 2024



One Minute Holding Pattern	CEW VORTAC	1200	2200	CEW
6000 ← 286°	2200 → 106°	NOTME CEW 7.3	MADEW CEW 8.3	
* 960 when using Eglin AFB altimeter setting.		* 900		
		7.3 NM 1 NM		
CATEGORY	A	B	C	D
C CIRCLING	900-1 686 (700-1)		900-2 686 (700-2)	900-2¼ 686 (700-2¼)
NOTME FIX MINIMUMS (ADF OR DME REQUIRED)				
C CIRCLING	700-1 486 (500-1)		820-1¾ 606 (700-1¾)	840-2 626 (700-2)

CRESTVIEW, FLORIDA
Amdt 12B 28FEB19

30°47'N-86°31'W

BOB SIKES(CEW)
VOR-A