

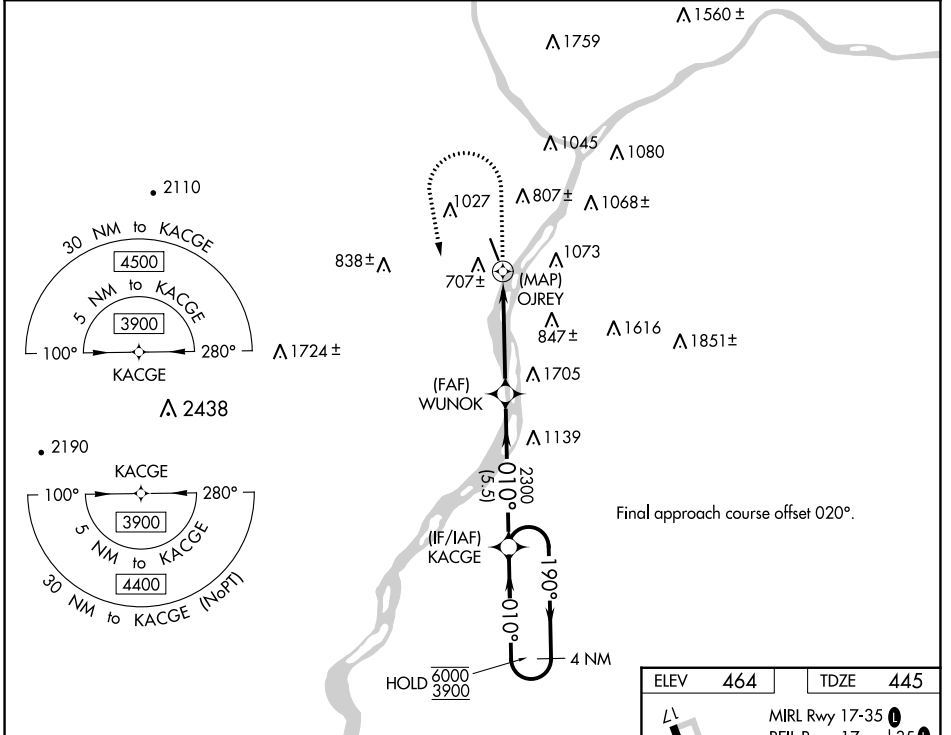
WAAS CH 49139 W35A	APP CRS 010°	Rwy Idg TDZE Apt Elev	4510 445 464
---------------------------------	------------------------	-----------------------------	-----------------------------------------

RNAV (GPS) RWY 35

PENN VALLEY (SE/G)

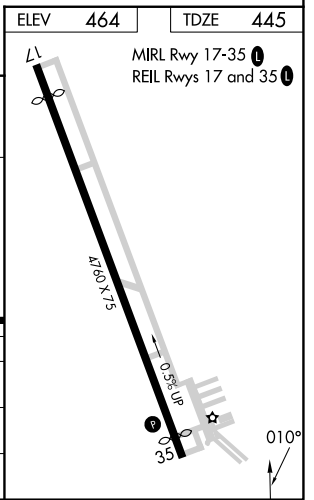
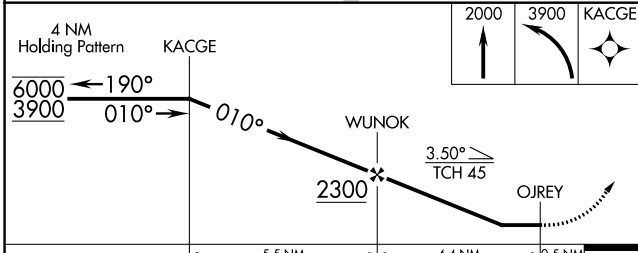
RNP APCH.
 Circling Rwy 17 NA at night. Rwy 35 helicopter visibility reduction below 1 SM NA. Straight-In Rwy 35 at night, operational VGSI required, remain on or above VGSI glidepath until threshold.
 MISSED APPROACH: Climb to 2000 then climbing left turn to 3900 direct KACGE and hold.
 -15°C

ASOS 123.975	HARRISBURG APP CON 118.25 269.45	UNICOM 122.7 (CTAF) 0
------------------------	--------------------------------------------	---------------------------------



NE-4, 31 OCT 2024 to 28 NOV 2024

NE-4, 31 OCT 2024 to 28 NOV 2024



CATEGORY	A	B	C	D
LP MDA	1200-1 755 (800-1)	1200-1¼ 755 (800-1¼)	1200-2	755 (800-2)
LNAV MDA	1840-1¼ 1395 (1400-1¼)	1840-1½ 1395 (1400-1½)	1840-3	1395 (1400-3)
CIRCLING	1840-1¼ 1376 (1400-1¼)	1840-1½ 1376 (1400-1½)	1840-3	1376 (1400-3)