

WAAS CH 58039 W11A	APP CRS 106°	Rwy Idg 5502 TDZE 1400 Apt Elev 1419
--	------------------------	---

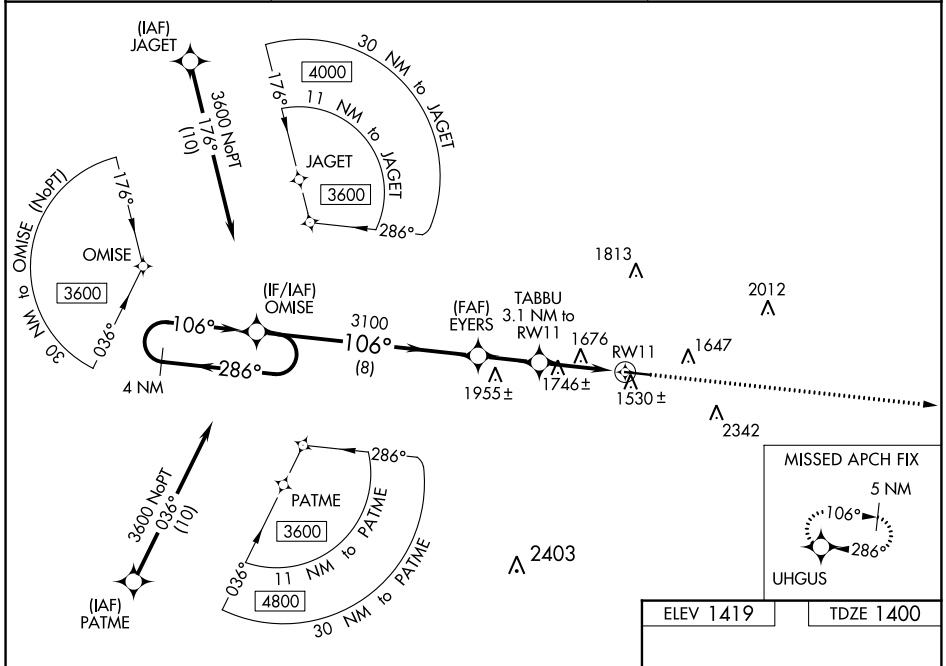
RNAV (GPS) RWY 11

INDIANA COUNTY/JIMMY STEWART FLD (IDI)

⚠ For uncompensated Baro-VNAV systems, LNAV/VNAV NA below -17°C (2°F) or above 54°C (130°F).
⚠ Baro-VNAV and VDP NA when using Allegheny County altimeter setting. DME/DME RNP-0.3 NA. Rwy 11 helicopter visibility reduction below ¾ SM NA. When local altimeter setting not received, use Allegheny County altimeter setting and increase LPV DA to 2026 feet and LNAV/VNAV DA to 2156 feet; increase visibility LPV all Cats to 2 ½ SM and LNAV/VNAV all Cats to 3 SM. Increase all MDA 120 feet and all Cat A and B visibility to 1 ¼ SM and LNAV Cat C and D visibility to 2 ½ SM.

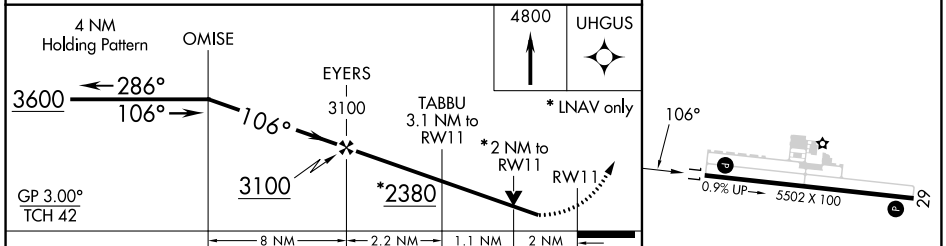
MISSED APPROACH:
Climb to 4800 direct UHGUS and hold.

AWOS-3 126.625	JOHNSTOWN APP CON * 121.2 299.2	UNICOM 122.8 (CTAF) 0
--------------------------	---	---------------------------------



NE-4, 31 OCT 2024 to 28 NOV 2024

NE-4, 31 OCT 2024 to 28 NOV 2024



CATEGORY	A	B	C	D
LPV DA	1907-1¾		507 (500-1¾)	
LNAV/VNAV DA	2037-2½		637 (700-2½)	
LNAV MDA	2060-1	660 (700-1)	2060-1⅞	660 (700-1⅞)
C CIRCLING	2120-1 701 (800-1)	2180-1 761 (800-1)	2660-3	1241 (1300-3)

ELEV 1419	TDZE 1400
-----------	-----------

*LNAV only

*2 NM to RW11

RW11

REIL Rwy 11 0
HIRL Rwy 11-29 0