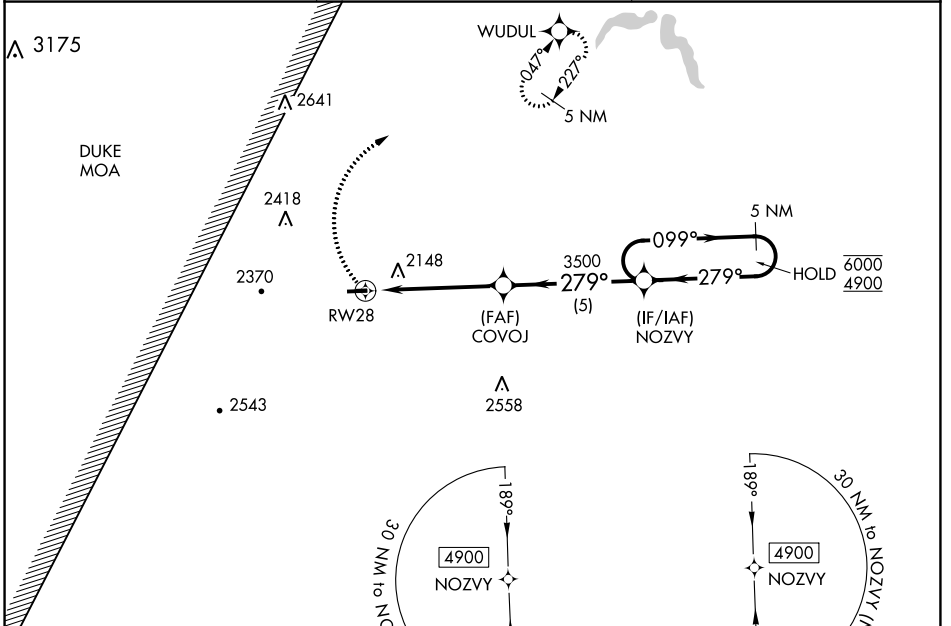


WAAS CH 99530 W28A	APP CRS 279°	Rwy Idg TDZE Apt Elev	3597 1892 1892
--	------------------------	-----------------------------	---

RNAV (GPS) RWY 28

GRAND CANYON RGNL (N38)

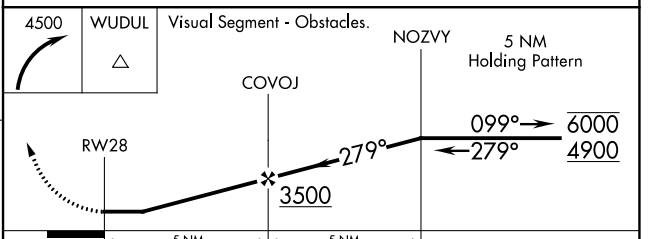
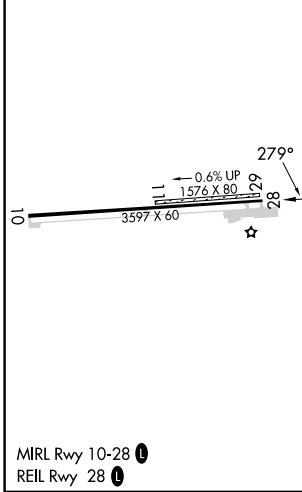
RNP APCH.		MISSED APPROACH: Climbing right turn to 4500 direct WUDUL and hold.
<p>▼ ▲</p> <p>Circling NA to Rwy 11 and 29. Procedure NA at night. Rwy 28 helicopter visibility reduction below 1 SM NA.</p>		
AWOS-3PT 120.925	ELMIRA APP CON ★ 128.425 257.8	UNICOM 122.8 (CTAF) 0



NE-4, 31 OCT 2024 to 28 NOV 2024

NE-4, 31 OCT 2024 to 28 NOV 2024

ELEV 1892	TDZE 1892
-----------	-----------



CATEGORY	A	B	C	D
LP MDA	2300-1	408 (500-1)	2300-1 $\frac{1}{8}$ 408 (500-1 $\frac{1}{8}$)	NA
LNAV MDA	2420-1	528 (600-1)	2420-1 $\frac{1}{2}$ 528 (600-1 $\frac{1}{2}$)	NA
C CIRCLING	2680-1	788 (800-1)	2740-2 $\frac{1}{2}$ 848 (900-2 $\frac{1}{2}$)	NA