

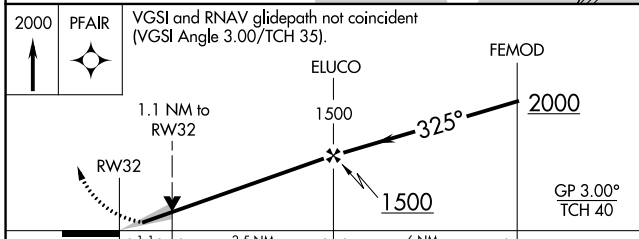
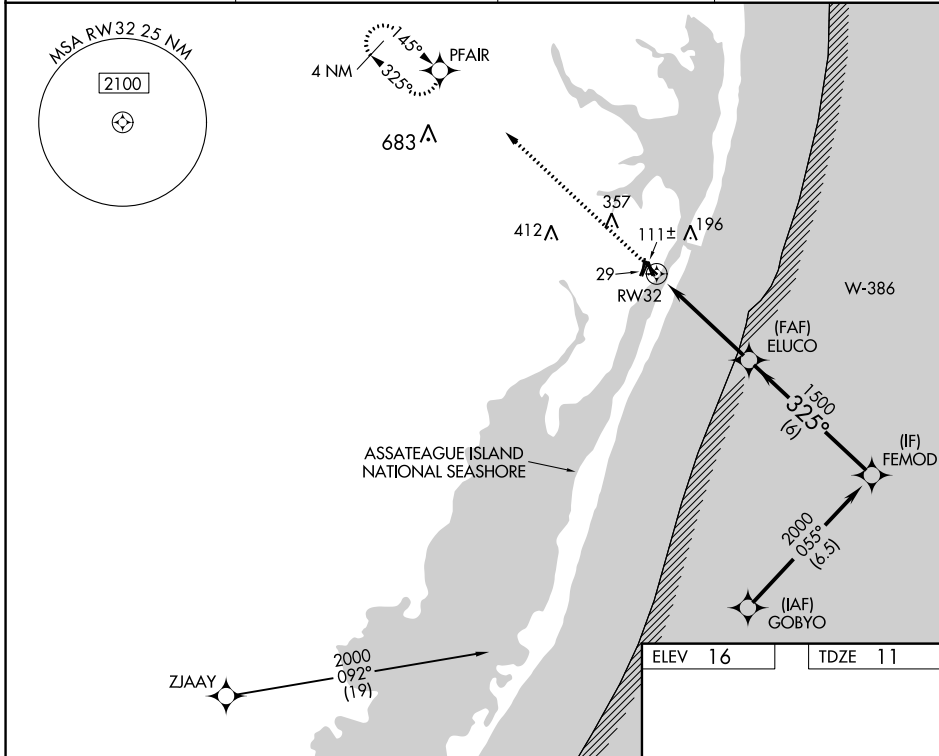
WAAS CH 61246 W32A	APP CRS 325°	Rwy ldg TDZE Apt Elev	4074 11 16
--	------------------------	-----------------------------	---------------------------------------

RNAV (GPS) RWY 32

OCEAN CITY MUNI (OXB)

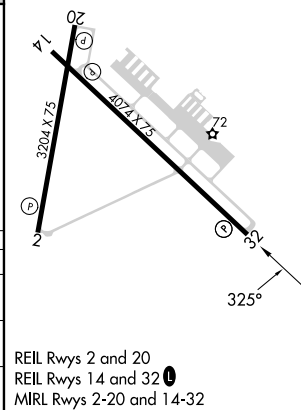
RNP APCH - GPS.	MISSED APPROACH: Climb to 2000 direct PFAIR and hold.
▼ For uncompensated Baro-VNAV systems, LNAV/VNAV NA below -11°C or above 54° C.	

ASOS 119.025	PATUXENT APP CON ★ 127.95 314.0	CLNC DEL 121.75	UNICOM 123.05 (CTAF) 📞
------------------------	---	---------------------------	---



ELEV 16	TDZE 11
---------	---------

CATEGORY	A	B	C	D
LPV DA		261-1	250 (300-1)	
LNAV/VNAV DA		289-1	278 (300-1)	
LNAV MDA		380-1	369 (400-1)	



REIL Rwy 2 and 20
REIL Rwy 14 and 32 **📞**
MIRL Rwy 2-20 and 14-32

NE-3, 31 OCT 2024 to 28 NOV 2024

NE-3, 31 OCT 2024 to 28 NOV 2024