

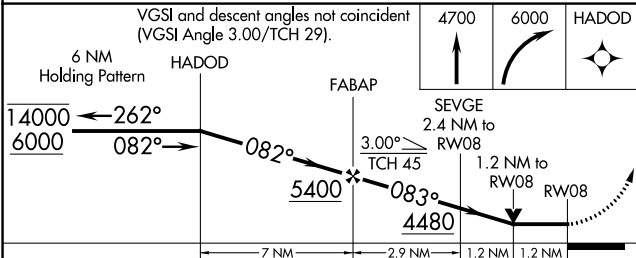
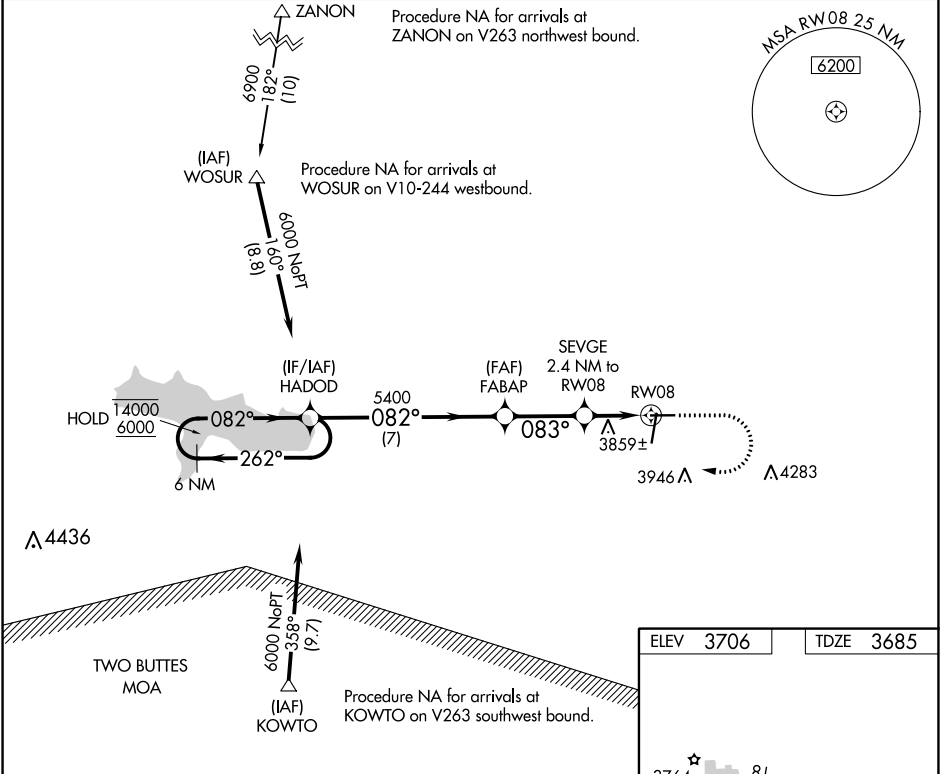
WAAS CH 97429 W08A	APP CRS 083°	Rwy Idg TDZE Apf Elev	5001 3685 3706
--	------------------------	-----------------------------	---

RNAV (GPS) RWY 8

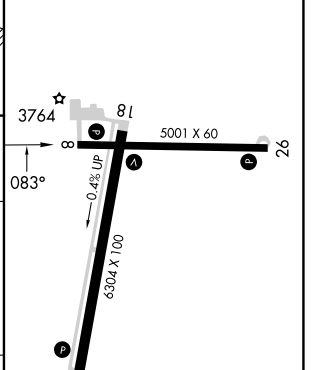
SOUTHEAST COLORADO RGNL (LAA)

RNP APCH.	MISSED APPROACH: Climb to 4700 then climbing right turn to 6000 direct HADOD and hold.
	Rwy 8 helicopter visibility reduction below 3/4 SM NA.

ASOS 135.625	DENVER CENTER 133.4 377.175	UNICOM 122.8 (CTAF) 0
------------------------	---------------------------------------	---------------------------------



ELEV 3706	TDZE 3685
-----------	-----------



CATEGORY	A	B	C	D
LP MDA	4080-1	395 (400-1)	4080-1 1/8	395 (400-1 1/8)
LNNAV MDA	4120-1	435 (500-1)	4120-1 1/4	435 (500-1 1/4)

REIL Rwy 8, 26, 18, and 36

MIRL Rwy 8-26 and 18-36

SW-1, 31 OCT 2024 to 28 NOV 2024

SW-1, 31 OCT 2024 to 28 NOV 2024