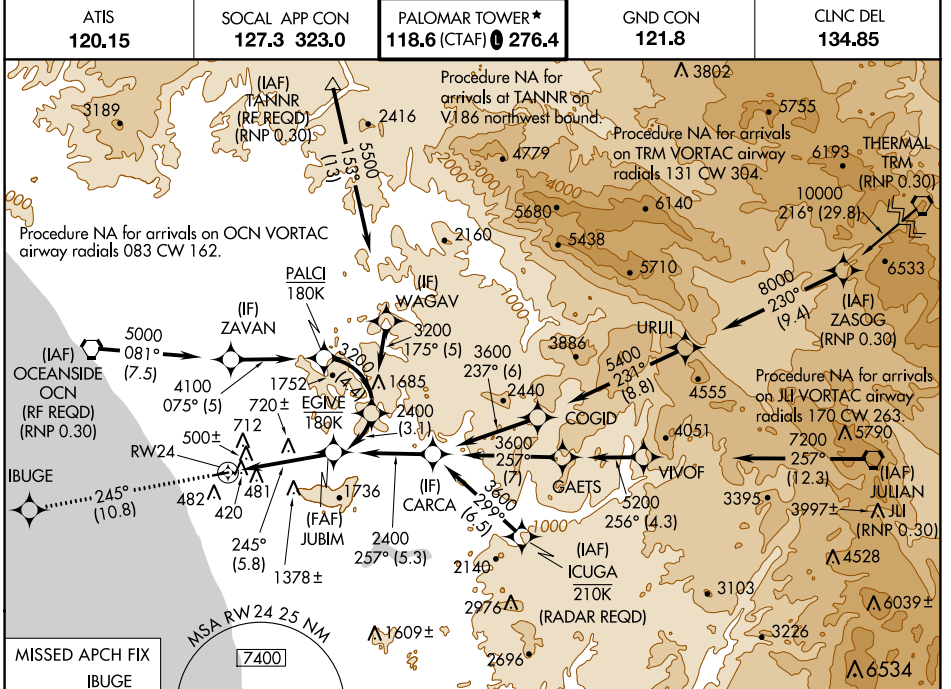


APP CRS	Rwy Idg	4897
245°	TDZE	326
	Apt Elev	331

RNAV (RNP) Z RWY 24

MC CLELLAN-PALOMAR (CRQ)

<p>For uncompensated Baro-VNAV systems, procedure NA below 1°C (34°F) or above 54°C (130°F). For inoperative MALS/R, increase RNP 0.10 visibility to RVR 6000 all Cats, RNP 0.30 visibility to 1% all Cats. GPS required.</p>	<p>MALS/R</p>	<p>MISSED APPROACH: Climb to 2000 on track 245° to IBUGE and hold.</p>
	<p>ATIS 120.15 SOCIAL APP CON 127.3 323.0 PALOMAR TOWER* 118.6 (CTAF) 0 276.4 GND CON 121.8 CLNC DEL 134.85</p>	



MISSIED APCH FIX IBUGE

4 NM

2000
↑
tr 245°

IBUGE

VGSI and RNAV glidepath not coincident (VGSI Angle 3.20/TCH 54).
See Planview for multiple IF locations.

JUBIM
2400

RW24

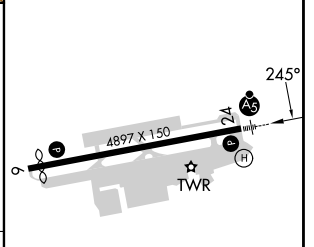
245°

2400

GP 3.30°
TCH 55

5.8 NM

ELEV	331	TDZE	326
------	-----	------	-----



CATEGORY	A	B	C	D
RNP 0.10 DA	810/50	484 (500-1)		NA
RNP 0.30 DA	931-1 $\frac{3}{8}$	605 (600-1 $\frac{3}{8}$)		NA

AUTHORIZATION REQUIRED

HIRL Rwy 6-24

SW-3, 31 OCT 2024 to 28 NOV 2024

SW-3, 31 OCT 2024 to 28 NOV 2024