

GATEWAY ONE DEPARTURE

AL-5316 (FAA)

ST LOUIS DOWNTOWN (CPS)
CAHOKIA/ST. LOUIS, ILLINOIS

EC-3, 31 OCT 2024 to 28 NOV 2024

TOP ALTITUDE: ASSIGNED BY ATC

TAKEOFF MINIMUMS

Rwys 12L/R, 23, 30R: Standard.

Rwy 5: 200-1/4 or standard with minimum climb of 343' per NM to 700.

Rwy 30L: 400-2 1/2 or standard with minimum climb of 220' per NM to 900,

or alternatively, with standard takeoff minimums and a normal 200'

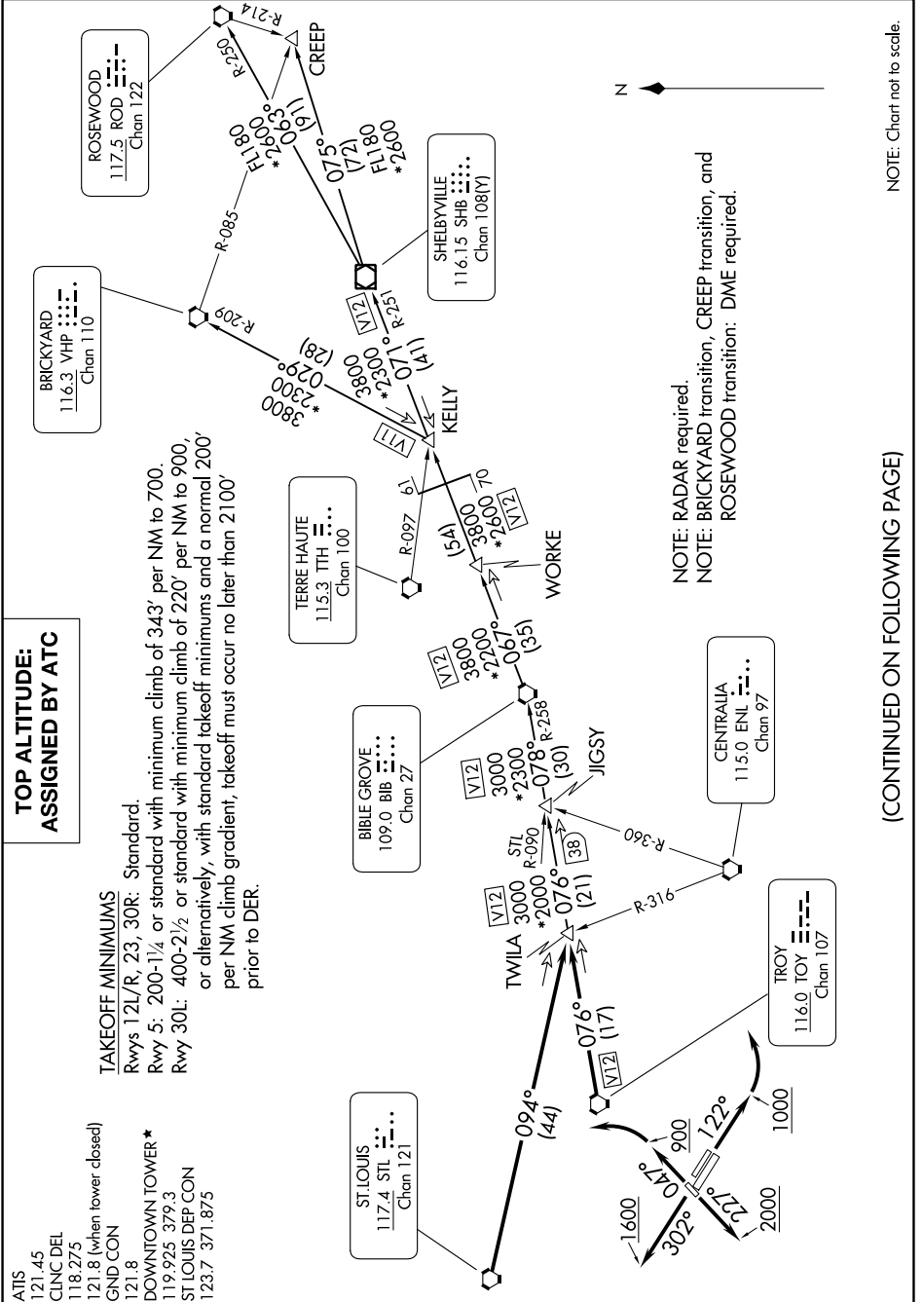
per NM climb gradient, takeoff must occur no later than 2100'

prior to DER.

ATIS 121.45
CLNC DEL 118.275
118.275
121.8 (when tower closed)
GND CON 121.8
DOWNTOWN TOWER * 119.925 379.3
ST LOUIS DEP CON 123.7 371.875

GATEWAY ONE DEPARTURE (GATWY1.TWILA) 08NOV18

CAHOKIA/ST. LOUIS, ILLINOIS
ST LOUIS DOWNTOWN (CPS)



(CONTINUED ON FOLLOWING PAGE)

NOTE: Chart not to scale.

EC-3, 31 OCT 2024 to 28 NOV 2024