

# LINDBERGH EIGHT DEPARTURE

AL-5316 (FAA)

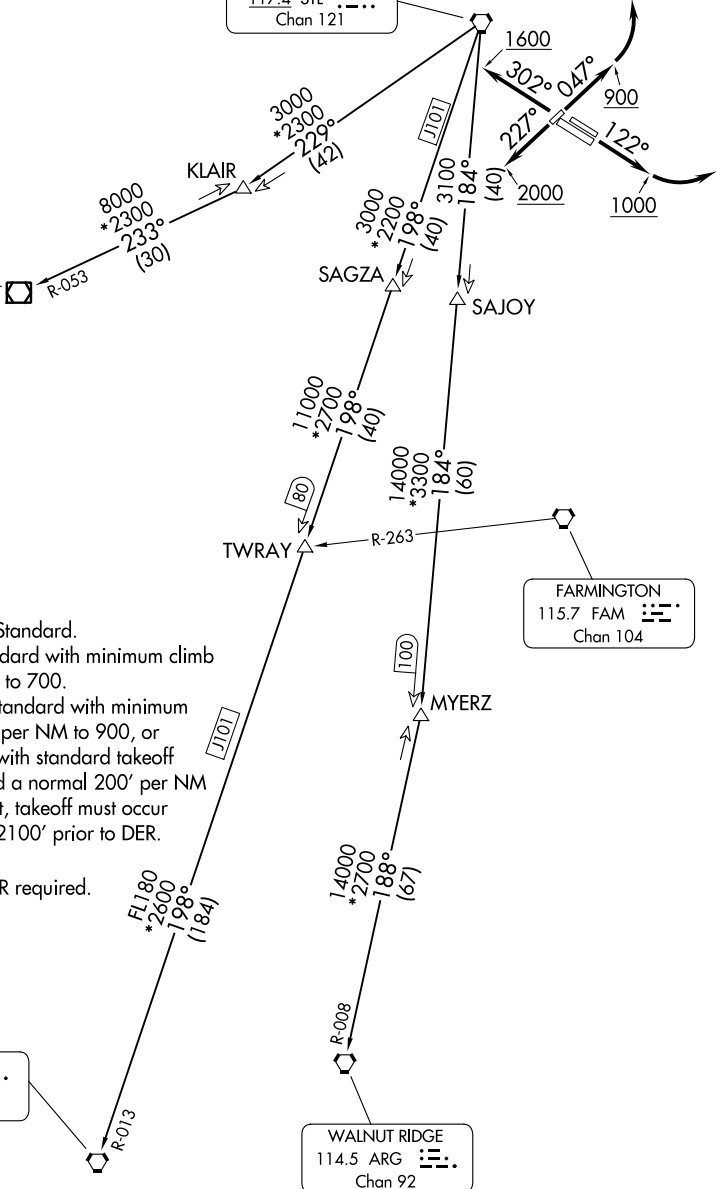
ST LOUIS DOWNTOWN (CPS)  
CAHOKIA/ST. LOUIS, ILLINOIS

ATIS  
121.45  
CLNC DEL  
118.275  
CLNC DEL  
121.8 (when twr closed)  
GND CON  
121.8  
DOWNTOWN TOWER\*  
119.925 379.3  
ST LOUIS DEP CON  
123.7 371.875

**TOP ALTITUDE:  
2500**

ST. LOUIS  
117.4 STL ...  
Chan 121

VICHY  
117.7 VIH ...  
Chan 124



### TAKEOFF MINIMUMS

Rwys 12L/R, 23, 30R: Standard.  
Rwy 5: 200-1¼ or standard with minimum climb of 343' per NM to 700.  
Rwy 30L: 400-2½ or standard with minimum climb of 220' per NM to 900, or alternatively, with standard takeoff minimums and a normal 200' per NM climb gradient, takeoff must occur no later than 2100' prior to DER.

NOTE: DME and RADAR required.

LITTLE ROCK  
113.9 LIT ...  
Chan 86

WALNUT RIDGE  
114.5 ARG ...  
Chan 92

(CONTINUED ON FOLLOWING PAGE)

NOTE: Chart not to scale.

# LINDBERGH EIGHT DEPARTURE

EC-3, 31 OCT 2024 to 28 NOV 2024

EC-3, 31 OCT 2024 to 28 NOV 2024