

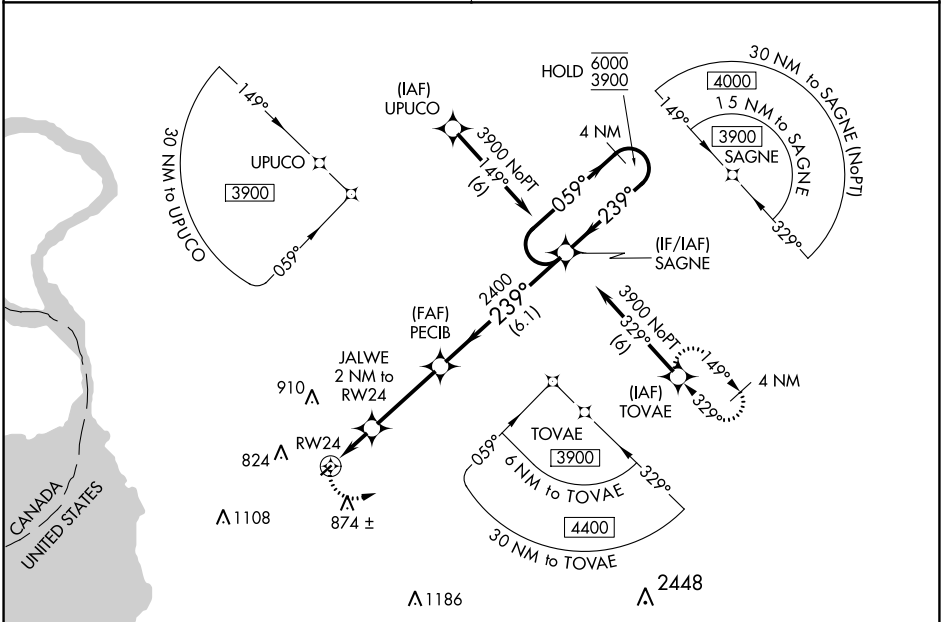
WAAS CH <b>42724</b> <b>W24A</b>	APP CRS <b>239°</b>	Rwy Idg <b>2666</b> TDZE <b>670</b> Apt Elev <b>670</b>
--	------------------------	---

# RNAV (GPS) RWY 24

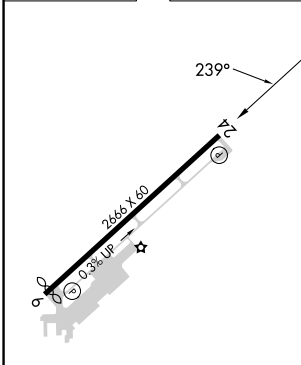
BUFFALO AIRFIELD (9G~~0~~)

RNP APCH.	<p>Procedure NA at night. Rwy 24 helicopter visibility reduction below 1 SM NA.</p> <p>NA Use Buffalo Niagara Intl altimeter setting.</p>	MISSED APPROACH: Climbing left turn to 3900 direct TOVAE and hold.
-----------	---	--

BUFFALO APP CON <b>126.15 263.125</b>	UNICOM <b>122.975 (CTAF)</b>
--	---------------------------------



ELEV 670	TDZE 670
----------	----------



<p>Visual Segment - Obstacles.</p> <p>Obstacles: JALWE 2 NM to RW24 (1340), PECIB (2400), SAGNE (4000).</p> <p>Distances: RW24 to JALWE (2 NM), JALWE to PECIB (3.3 NM), PECIB to SAGNE (6.1 NM).</p>				
3900	TOVAE	SAGNE		4 NM Holding Pattern
<p>Altitudes: 6000, 3900</p> <p>Angles: 059°, 239°</p>				
CATEGORY	A	B	C	D
LP MDA	1160-1	490 (500-1)	NA	
LNAV MDA	1160-1	490 (500-1)	NA	

REIL Rwy 6 and 24  
MIRL Rwy 6-24

NE-2, 31 OCT 2024 to 28 NOV 2024

NE-2, 31 OCT 2024 to 28 NOV 2024