

WAAS CH 62904 W25A	APP CRS 245°	Rwy Idg TDZE Apt Elev	5000 993 993
--	------------------------	-----------------------------	---

RNAV (GPS) RWY 25

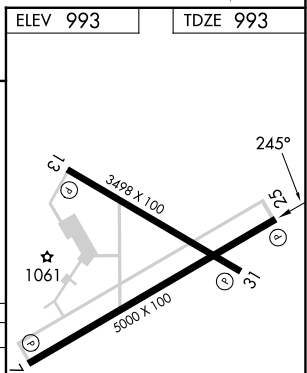
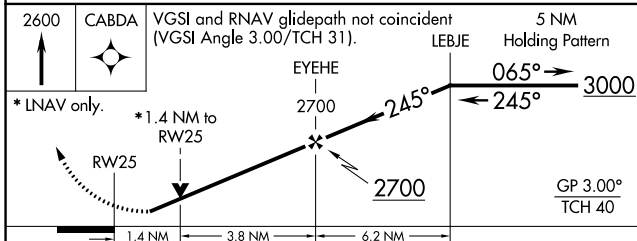
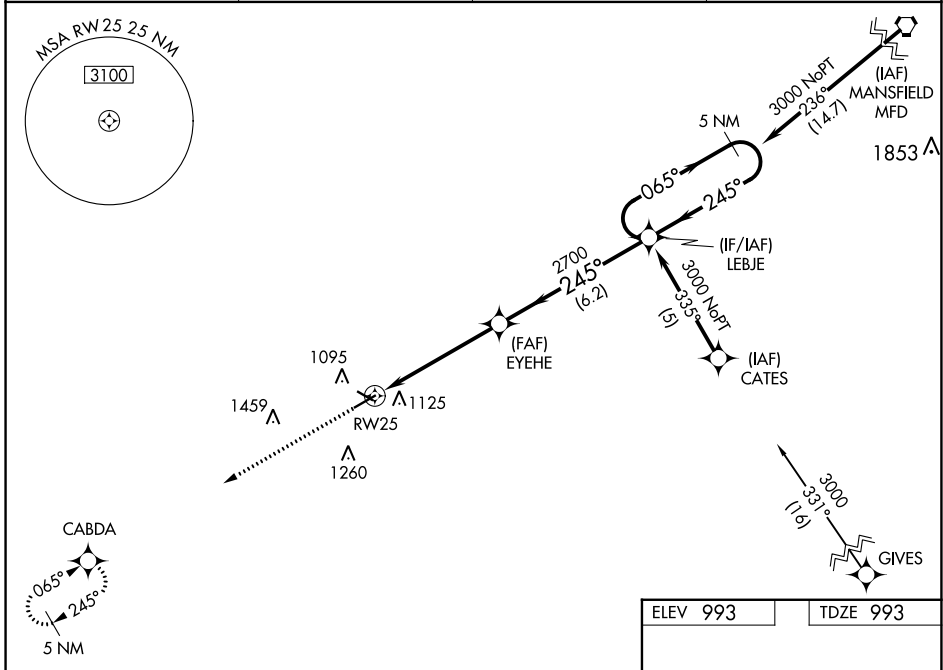
MARION MUNI (MNN)

RNP APCH.

⚠ For uncompensated Baro-VNAV systems, LNAV/VNAV NA below -16°C (4°F) or above 54°C (130°F). Baro-VNAV and VDP NA when using Ohio State University altimeter setting. Rwy 25 helicopter visibility reduction below 3/4 SM NA. When local altimeter setting not received, use Ohio State University altimeter setting and increase LPV DA to 1421 feet, increase LNAV/VNAV DA to 1530 feet; increase all MDAs 100 feet and visibility Cat C/D 1/4 SM.

MISSED APPROACH:
Climb to 2600 direct CABDA and hold.

ASOS 119.975	CLEVELAND APP CON * 128.35 360.65	CLNC DEL 126.8	UNICOM 122.8 (CTAF) 0
------------------------	---	--------------------------	---------------------------------



CATEGORY	A	B	C	D
LPV DA		1334-1¼	341 (400-1¼)	
LNAV/VNAV DA		1443-1½	450 (500-1½)	
LNAV MDA	1460-1	467 (500-1)	1460-1½	467 (500-1½)
CIRCLING	1480-1 487 (500-1)	1500-1 507 (600-1)	1700-2 707 (800-2)	1820-2¾ 827 (900-2¾)

ELEV 993 TDZE 993

REIL Rws 7, 13, 25 and 31 0

MIRL Rws 7-25 and 13-31 0

EC-2, 31 OCT 2024 to 28 NOV 2024

EC-2, 31 OCT 2024 to 28 NOV 2024