

WAAS CH <b>57905</b> <b>W10A</b>	APP CRS <b>103°</b>	Rwy Idg <b>5001</b> TDZE <b>308</b> Apt Elev <b>310</b>
--	------------------------	---

# RNAV (GPS) RWY 10

CRISP COUNTY-CORDELE (CKF)

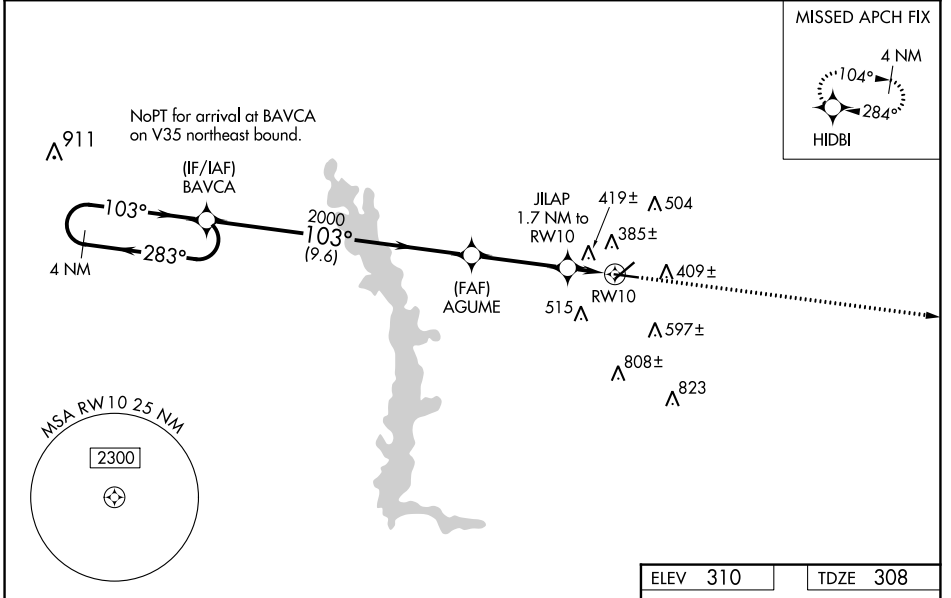
RNP APCH-GPS.

⚠ For uncompensated Baro-VNAV systems, LNAV/VNAV NA below -15°C or above 54°C. Rwy 10 helicopter visibility reduction below 3/4 SM NA. Circling Rwy 28 NA at night. Inop table does not apply to LPV and LNAV all Cats. For inop ALS, increase LNAV/VNAV Cat A/B visibility to 1 1/2 SM.

ODALS

MISSED APPROACH: Climb to 2100 direct HIDBI and hold.

AWOS-3PT <b>119.325</b>	JACKSONVILLE CENTER <b>125.75 363.075</b>	UNICOM <b>123.050</b> (CTAF)
----------------------------	--	---------------------------------



SE-4, 31 OCT 2024 to 28 NOV 2024

SE-4, 31 OCT 2024 to 28 NOV 2024

ELEV 310	TDZE 308
----------	----------

VGSI and RNAV glidepath not coincident (VGSI Angle 3.00/TCH 42).

4 NM Holding Pattern

BAVCA

AGUME

JILAP 1.7 NM to RWY 10

2100

HIDBI

\*LNAV only.

2000

103°

283°

2000

\*880

\*1.1 NM to RWY 10

GP 3.00° TCH 53

9.6 NM

3.5 NM

0.6

1.1 NM

CATEGORY	A	B	C	D
LPV DA		612-1	304 (400-1)	
LNAV/ VNAV DA		726-1 1/4	418 (300-1 1/4)	
LNAV MDA		680-1	372 (400-1)	
CIRCLING	820-1	510 (600-1)	1080-2 1/4 770 (800-2 1/4)	1160-2 3/4 850 (900-2 3/4)

MIRL Rwy 10-28

REIL Rws 10 and 28