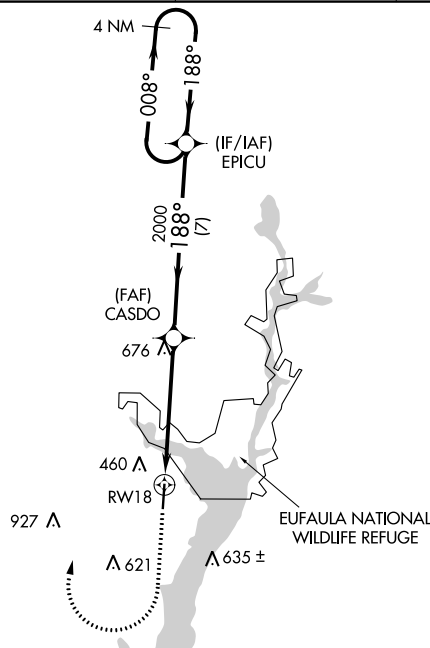
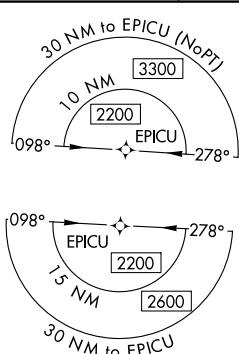


WAAS CH 86723 W18A	APP CRS 188°	Rwy Idg TDZE Apt Elev	5000 285 285
--	------------------------	-----------------------------	---

RNAV (GPS) RWY 18

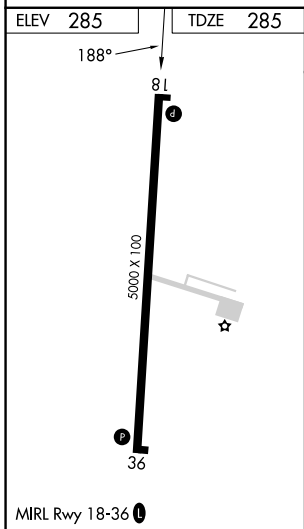
WEEDON FLD (EUF)

RNP APCH - GPS.			MISSED APPROACH: Climb to 1300 then climbing right turn to 2200 direct EPICU and hold.
ASOS 128.325	ATLANTA APP CON * 125.5 323.1	CLNC DEL 134.25 339.8	UNICOM 122.8 (CTAF) 0



SE-4, 31 OCT 2024 to 28 NOV 2024

SE-4, 31 OCT 2024 to 28 NOV 2024



1300	2200	EPICU	VGSI and RNAV glidepath not coincident (VGSI Angle 3.00/TCH 26).	4 NM Holding Pattern
		EPICU	GP 3.00° TCH 40	
CATEGORY	A	B	C	D
LPV DA	599-1		314 (400-1)	
LNAV/VNAV DA	706-1¼		421 (500-1¼)	
LNAV MDA	940-1	655 (700-1)	940-1⅞	655 (700-1⅞)
CIRCLING	940-1	655 (700-1)	1060-2¼ 775 (800-2¼)	1060-2½ 775 (800-2½)