

LOC/DME I-HEV <b>110.7</b> Chan <b>44</b>	APP CRS <b>217°</b>	Rwy Ldg TDZE <b>743</b> Apt Elev <b>755</b>
---	------------------------	---

# ILS or LOC RWY 22

SHEBOYGAN COUNTY MEML INTL (SBM)

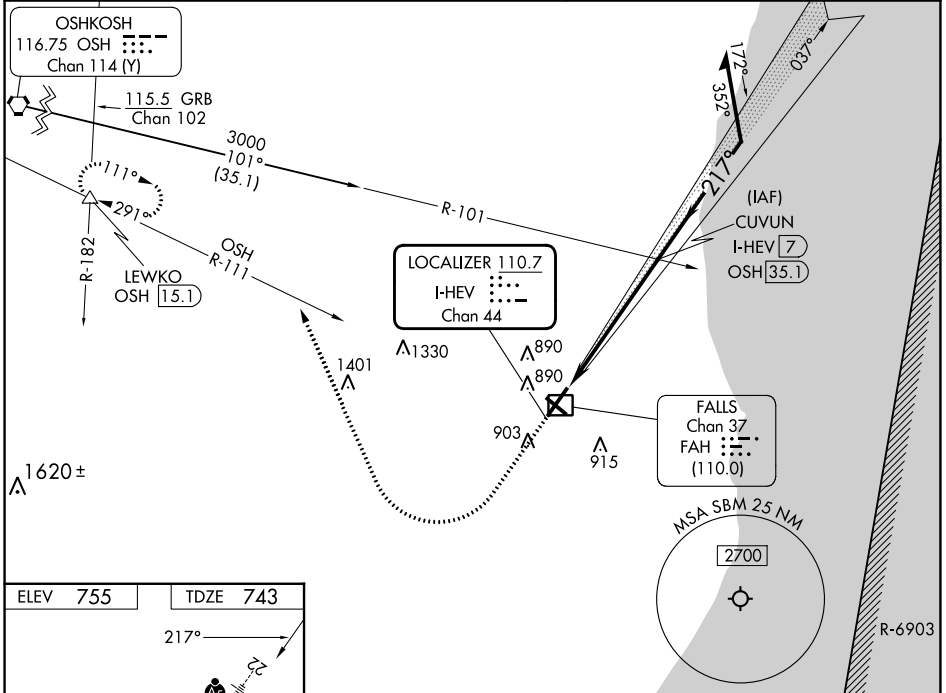
DME required.

⚠ NA

MALSR

MISSED APPROACH: Climb to 1400 then climbing right turn to 3000 on heading 338° and OSH VORTAC R-111 to LEWKO INT/OSH 1.5.1 DME and hold.

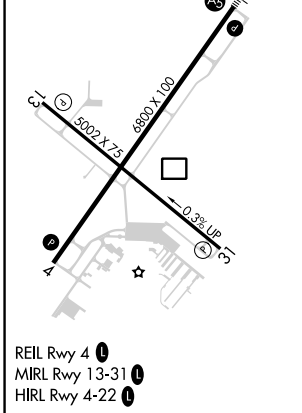
ASOS <b>118.425</b>	MILWAUKEE APP CON <b>127.375 263.075</b>	GCO <b>121.725</b>	CLNC DEL <b>127.375</b>	UNICOM <b>122.7 (CTAF)</b> <b>0</b>
------------------------	---	-----------------------	----------------------------	--



EC-3, 31 OCT 2024 to 28 NOV 2024

EC-3, 31 OCT 2024 to 28 NOV 2024

ELEV 755	TDZE 743
----------	----------



1400	3000	OSH R-111	LEWKO	Use I-HEV DME when on the localizer course.
↑	hdg 338°	△		CUVUN I-HEV 7
				Remain within 10 NM
*LOC only.				
I-HEV 1.3	*I-HEV 2.6	2600	037°	2600
		2600	217°	2600
1.3 NM		4.4 NM		GS 3.00° TCH 50

CATEGORY	A	B	C	D
S-ILS 22	943-1/2 200 (200-1/2)			
S-LOC 22	1200-1/2 457 (500-1/2)	1200-7/8 457 (500-7/8)		
<b>C</b> CIRCLING	1200-1 445 (500-1)	1220-1 465 (500-1)	1240-1 1/2 485 (500-1 1/2)	1360-2 605 (700-2)