

| | | | |
|--|------------------------|-----------------------------|---|
| WAAS CH 45720 W27A | APP CRS 272° | Rwy Idg TDZE Apt Elev | 5004 903 905 |
|--|------------------------|-----------------------------|---|

RNAV (GPS) RWY 27L

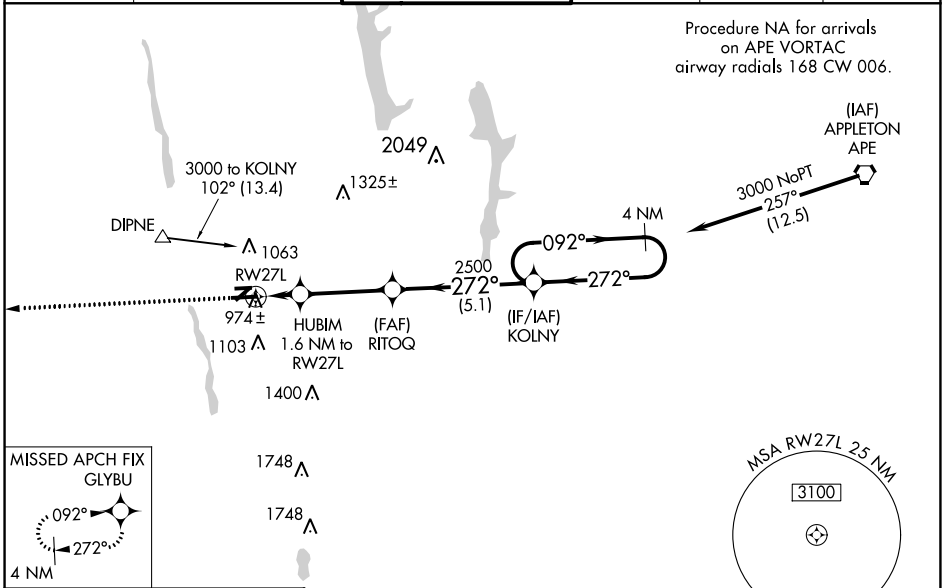
OHIO STATE UNIVERSITY (OSU)

RNP APCH.

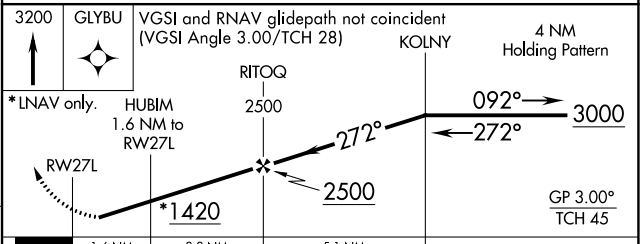
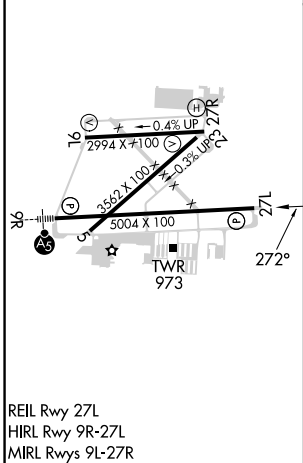
⚠ Baro-VNAV NA when using John Glenn Columbus Intl altimeter setting. For uncompensated Baro-VNAV systems, LNAV/VNAV NA below -16°C or above 38°C. When local altimeter setting not received, use John Glenn Columbus Intl altimeter setting; increase LPV DA to 1178 feet; increase LNAV/VNAV DA to 1224 feet and all visibilities 1/8 SM; increase all MDAs 40 feet and visibility LNAV Cat C 1/8 SM and Cat D 1/4 SM, and Circling Cat D 1/4 SM. Circling Rwy 23 NA at night. Rwy 27L helicopter visibility reduction below 3/4 SM NA.

MISSED APPROACH: Climb to 3200 direct GLYBU and hold.

| | | | | | |
|-----------------------|---|--|-------------------------|--------------------------|-------------------------|
| ATIS 121.35 | COLUMBUS APP CON 125.95 317.775 | STATE TOWER * 118.8 (CTAF) 0 254.325 | GND CON 121.7 | CLNC DEL 121.7 | UNICOM 122.95 |
|-----------------------|---|--|-------------------------|--------------------------|-------------------------|



| | | |
|----------|----------|----------|
| ELEV 905 | D | TDZE 903 |
|----------|----------|----------|



| CATEGORY | A | B | C | D |
|--------------|-----------------------|-----------------------|-------------------------------|-------------------------------|
| LPV DA | | 1153-1 | 250 (300-1) | |
| LNAV/VNAV DA | | 1199-1 | 296 (300-1) | |
| LNAV MDA | 1280-1 | 377 (400-1) | 1280-1 1/8 | 377 (400-1 1/8) |
| CIRCLING | 1380-1 475 (500-1) | 1420-1 515 (600-1) | 1420-1 1/2 515 (600-1 1/2) | 1680-2 1/2 775 (800-2 1/2) |

EC-2, 31 OCT 2024 to 28 NOV 2024

EC-2, 31 OCT 2024 to 28 NOV 2024