

WAAS CH <b>62839</b> <b>W16A</b>	APP CRS <b>152°</b>	Rwy Idg TDZE Apt Elev	<b>6506</b> <b>355</b> <b>355</b>
----------------------------------------	------------------------	-----------------------------	-----------------------------------------

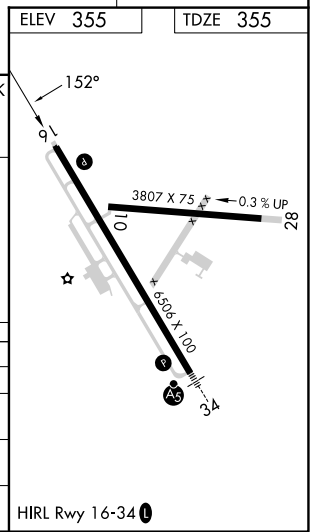
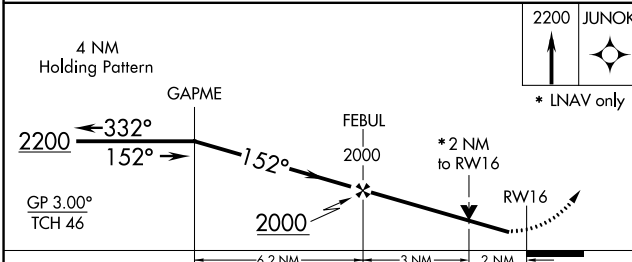
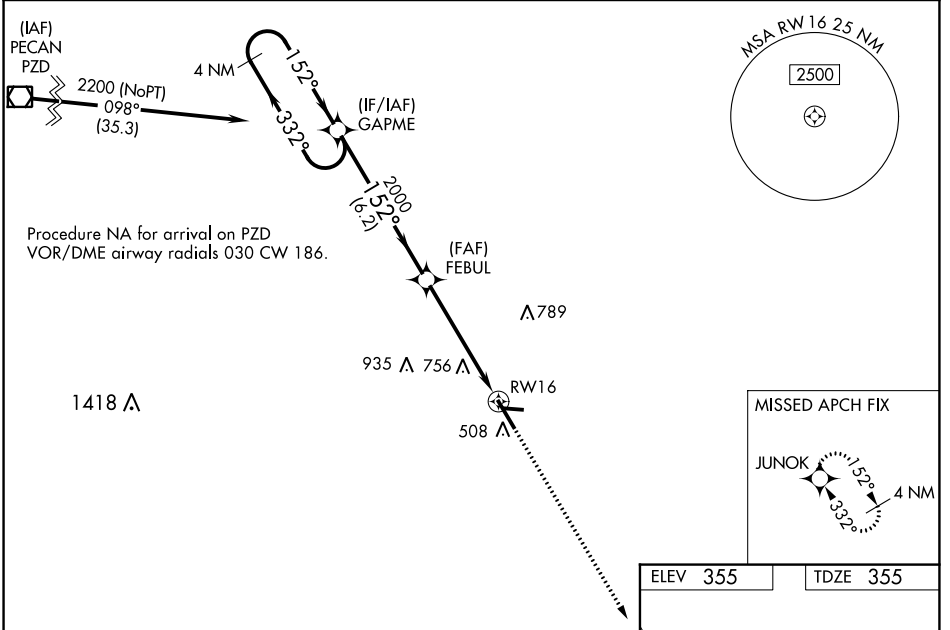
# RNAV (GPS) RWY 16

HENRY TIFT MYERS (TMA)

**⚠** For uncompensated Baro-VNAV systems, LNAV/VNAV NA below -1.5°C (5°F) or above 54°C (130°F). Circling Rwy 10 NA at night. DME/DME RNP-0.3 NA. Rwy 16 Helicopter visibility reduction below 3/4 SM NA.

**MISSED APPROACH:**  
Climb to 2200 direct JUNOK and hold.

AWOS-3PT <b>118.525</b>	VALDOSTA APP CON★ <b>126.6 285.6</b>	UNICOM <b>122.7 (CTAF) 0</b>
----------------------------	-----------------------------------------	---------------------------------



CATEGORY	A	B	C	D
LPV DA		621-7/8	266 (300-7/8)	
LNAV/VNAV DA		1100-3	745 (800-3)	
LNAV MDA	1020-1	665 (700-1)	1020-17/8	665 (700-17/8)
<b>C</b> CIRCLING	1020-1 665 (700-1)	1060-1 705 (800-1)	1060-2 705 (800-2)	1240-3 885 (900-3)

SE-4, 31 OCT 2024 to 28 NOV 2024

SE-4, 31 OCT 2024 to 28 NOV 2024