

(SLVER.SLVER1) 16259

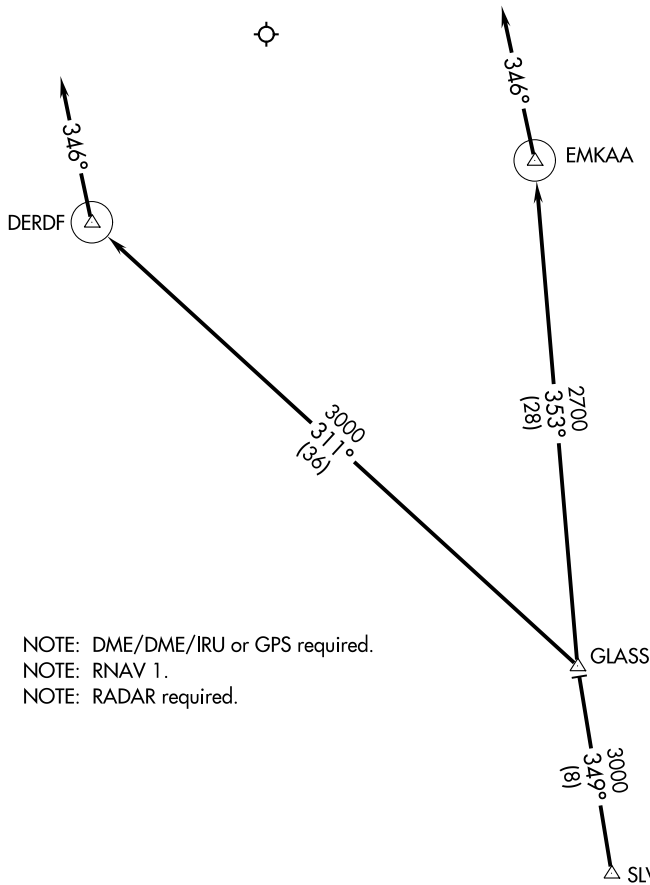
SLVER ONE ARRIVAL (RNAV)

AL-5400 (FAA)

SPIRIT OF ST LOUIS (SUS)

ST. LOUIS, MISSOURI

ATIS
134.8
ST LOUIS APP CON
128.1 307.05



NOTE: DME/DME/IRU or GPS required.
NOTE: RNAV 1.
NOTE: RADAR required.

VERTICAL NAVIGATION
PLANNING INFORMATION
Expect 12000

NOTE: Chart not to scale.

ARRIVAL ROUTE DESCRIPTION

From SLVER on track 349° to GLASS.

LANDING RUNWAYS 8L/R: From GLASS on track 311° to DERDF, then on track 346°, expect RADAR vectors prior to DERDF.

LANDING RUNWAYS 26L/R: From GLASS on track 353° to EMKAA, then on track 346°, expect RADAR prior to EMKAA.

SLVER ONE ARRIVAL (RNAV)

(SLVER.SLVER1) 15NOV12

ST. LOUIS, MISSOURI
SPIRIT OF ST LOUIS (SUS)

NC-3, 31 OCT 2024 to 28 NOV 2024

NC-3, 31 OCT 2024 to 28 NOV 2024