

22083

# AIRPORT DIAGRAM

AL-5401 (FAA)

MONTGOMERY-GIBBS EXEC (MYF)

SAN DIEGO, CALIFORNIA

ATIS  
 126.9  
 MONTGOMERY TOWER\*  
 119.2 269.4 (RWYS 05, 10L/R, 23, 28L)  
 125.7 269.4 (RWY 28R)  
 GND CON  
 118.225  
 CLNC DEL  
 123.725

576

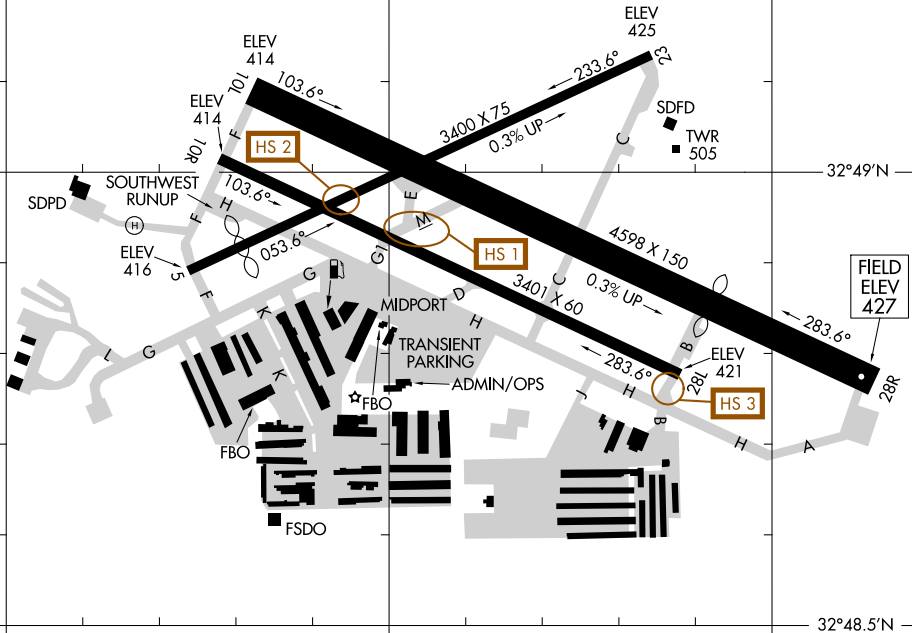
32°49.5'N

RWY 05-23  
 PCN 37 F/B/Y/T  
 S-12  
 RWY 10L-28R  
 PCN 48 F/C/Y/T  
 S-12  
 RWY 10R-28L  
 PCN 44 F/C/Y/T  
 S-12

VAR 11.4° E  
 JANUARY 2020  
 ANNUAL RATE OF CHANGE  
 0.1° W

SW-3, 31 OCT 2024 to 28 NOV 2024

SW-3, 31 OCT 2024 to 28 NOV 2024



CAUTION: BE ALERT TO RUNWAY CROSSING CLEARANCES.  
READBACK OF ALL RUNWAY HOLDING INSTRUCTIONS IS REQUIRED.

117°09'W

117°08.5'W

117°08'W

# AIRPORT DIAGRAM

22083

SAN DIEGO, CALIFORNIA

MONTGOMERY-GIBBS EXEC (MYF)