

WAAS CH 86928 W17A	APP CRS 147°	Rwy Idg TDZE Apt Elev	3695 379 388
---------------------------------	------------------------	-----------------------------	---

RNAV (GPS) RWY 17

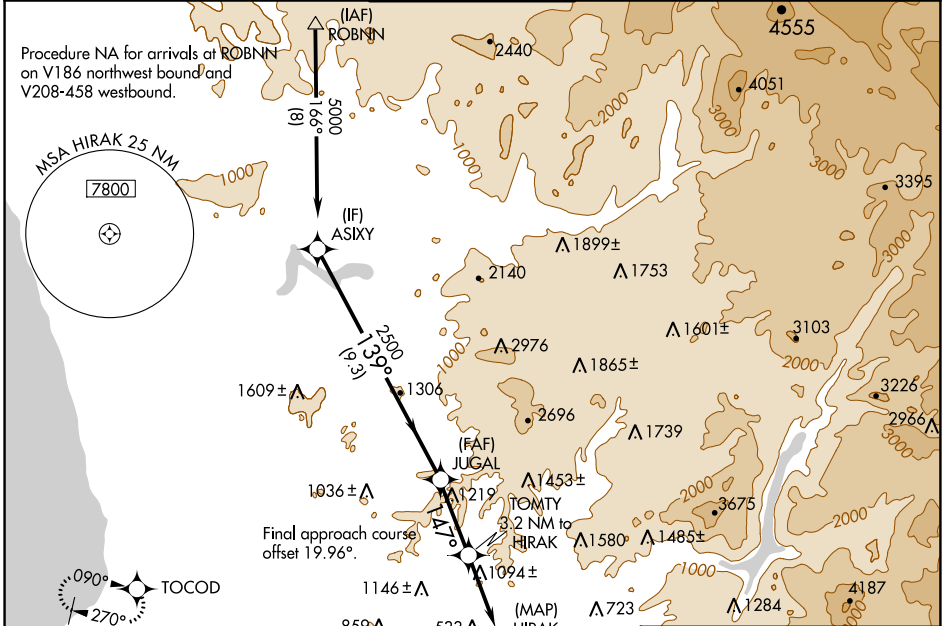
GILLESPIE FLD (SEE)

RNP APCH - GPS.

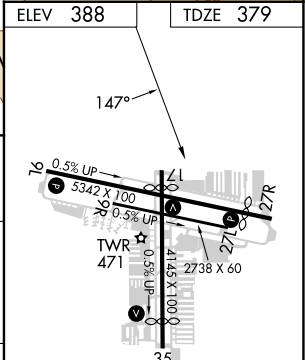
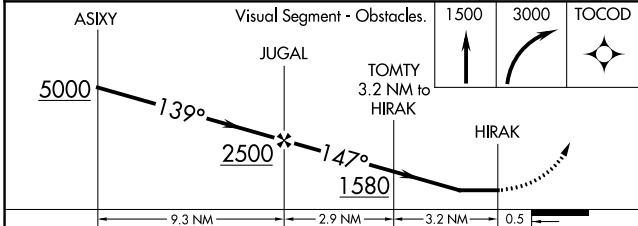
⚠ Circling NA northeast of Rwy 17 and 27R. When local altimeter setting not received, use Miramar MCAS altimeter setting and increase all MDA 40 feet. Rwy 17 helicopter visibility reduction below 1 SM NA. Circling Rwy 27R, 35 NA at night.

MISSED APPROACH: Climb to 1500 then climbing right turn to 3000 direct TOCOD and hold.

ATIS 125.45	SOCAL APP CON 124.35 279.625	GILLESPIE TOWER* 120.7 (CTAF) 257.8	GND CON 121.7	CLNC DEL 125.1
-----------------------	--	---	-------------------------	--------------------------



ASIXY		Visual Segment - Obstacles.		1500	3000	TOCOD
JUGAL		TOMTY 3.2 NM to HIRAK				
HIRAK						
ELEV 388		TDZE 379				



CATEGORY	A	B	C	D
LP MDA	1360-1¼ 981 (1000-1¼)	1360-1½ 981 (1000-1½)	1360-3	981 (1000-3)
LNNAV MDA	1380-1¼ 1001 (1000-1¼)	1380-1½ 1001 (1000-1½)	1380-3	1001 (1000-3)
CIRCLING	1440-1¼ 1052 (1100-1¼)	1440-1½ 1052 (1100-1½)	1940-3	1552 (1600-3)

MIRL Rwy 9L-27R and 17-35
REIL Rwy 27R

SW-3, 31 OCT 2024 to 28 NOV 2024

SW-3, 31 OCT 2024 to 28 NOV 2024