

| | |
|------------------------|------------------------|
| APP CRS 089° | Rwy Idg 5342 |
| | TDZE 379 |
| | Apt Elev 388 |

RNAV (GPS) RWY 9L

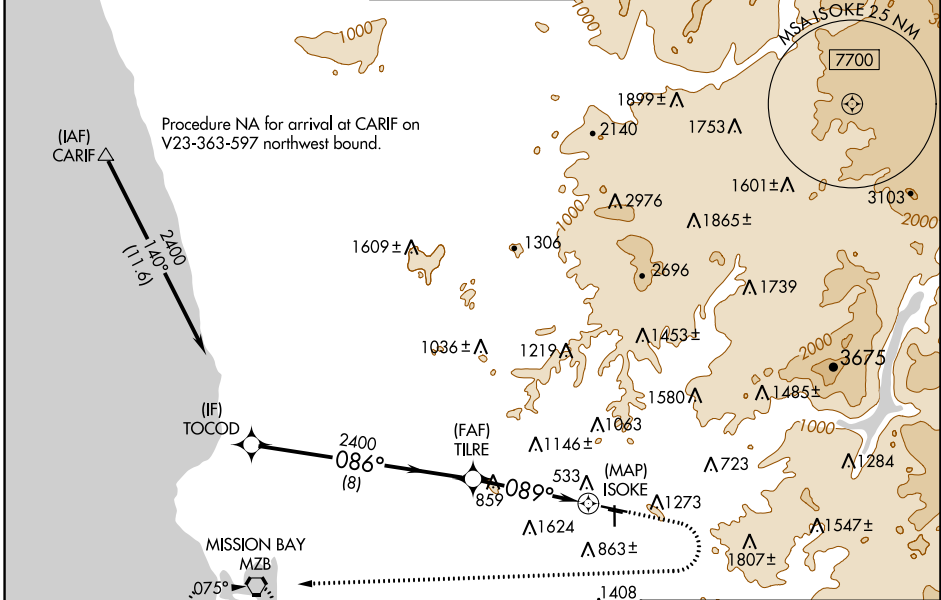
GILLESPIE FLD (SEE)

RNP APCH - GPS.

⚠ For uncompensated Baro-VNAV systems, LNAV/VNAV NA below 5°C or above 14°C. Circling NA northeast of Rwy 17 and 27R. Circling Rwy 27R, 35 NA at night. Rwy 9L helicopter visibility reduction below 1 SM NA.

MISSED APPROACH: Climb to 1900 then climbing right turn to 2700 direct MZB VORTAC and hold.

| | | | | |
|-----------------------|--|---|-------------------------|--------------------------|
| ATIS 125.45 | SOCAL APP CON 124.35 279.625 | GILLESPIE TOWER* 120.7 (CTAF) 257.8 | GND CON 121.7 | CLNC DEL 125.1 |
|-----------------------|--|---|-------------------------|--------------------------|

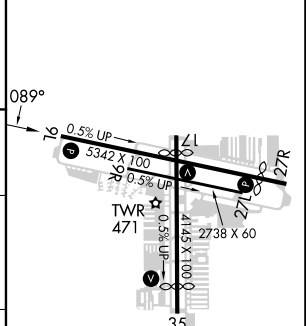
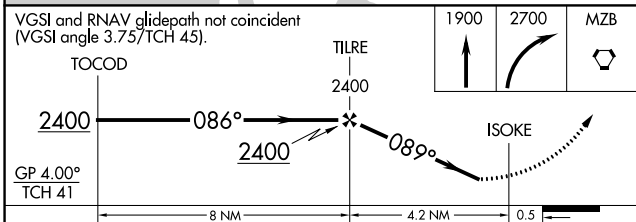


SW-3, 31 OCT 2024 to 28 NOV 2024

SW-3, 31 OCT 2024 to 28 NOV 2024



| | |
|----------|----------|
| ELEV 388 | TDZE 379 |
|----------|----------|



| CATEGORY | A | B | C | D |
|-------------------|---------------------------|---------------------------|---|----|
| LNAV/VNAV DA | 1350-3 | 971 (1000-3) | | NA |
| LNAV MDA | 1720-1¼ 1341 (1400-1¼) | 1720-1½ 1341 (1400-1½) | | NA |
| C CIRCLING | 1720-1¼ 1332 (1400-1¼) | 1720-1½ 1332 (1400-1½) | | NA |

MIRL Rwy 9L-27R and 17-35 **⚠**
REIL Rwy 27R **⚠**