


WAAS CH 49000 W21A	APP CRS 205°	Rwy Idg TDZE Apt Elev	5002 1216 1216
--	------------------------	-----------------------------	---

RNAV (GPS) RWY 21

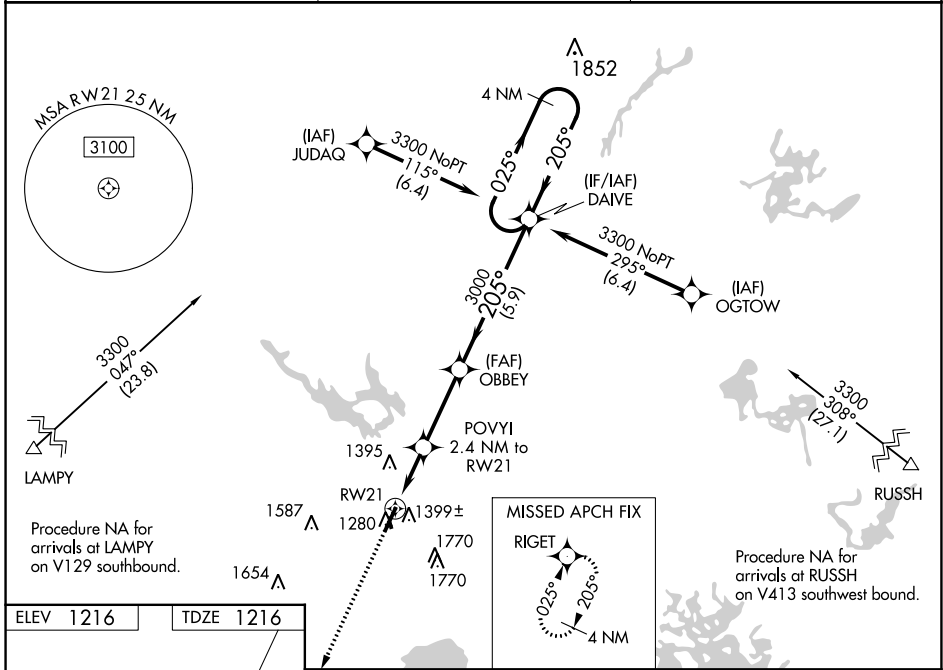
SAWYER COUNTY (HYR)

RNP APCH.

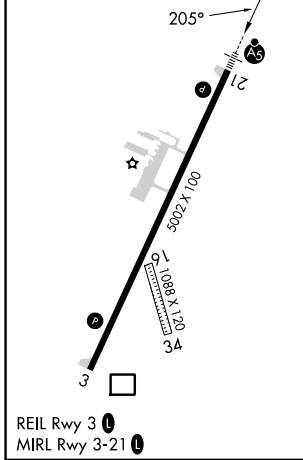
⚠ For uncompensated Baro-VNAV systems, LNAV/VNAV NA below -22°C (-7°F) or above 54°C (130°F). For inop MALSR, increase LNAV/VNAV all Cats visibility to 1 1/8 mile and LNAV Cat A and B visibility to 1 mile. Rwy 21 helicopter visibility reduction below 3/4 SM NA. Circling NA to Rwy 16 and 34.

MALSR  MISSED APPROACH: Climb to 3100 direct RIGET and hold.

ASOS 118.4	MINNEAPOLIS CENTER 126.45 276.4	UNICOM 122.8 (CTAF) 0
----------------------	---	---------------------------------



ELEV 1216	TDZE 1216
-----------	-----------



CATEGORY	A	B	C	D
LPV DA		1518-3/4	302 (400-3/4)	
LNAV/VNAV DA		1560-3/4	344 (400-3/4)	
LNAV MDA		1640-3/4	424 (500-3/4)	
<input checked="" type="checkbox"/> CIRCLING	1860-1 644 (700-1)	2060-1 1/4 844 (900-1 1/4)	2120-2 3/4 904 (1000-2 3/4)	2120-3 904 (1000-3)

EC-3, 31 OCT 2024 to 28 NOV 2024

EC-3, 31 OCT 2024 to 28 NOV 2024