

(RICHY7.SWR) 23334

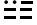
RICHY SEVEN DEPARTURE

AL-5416 (FAA)

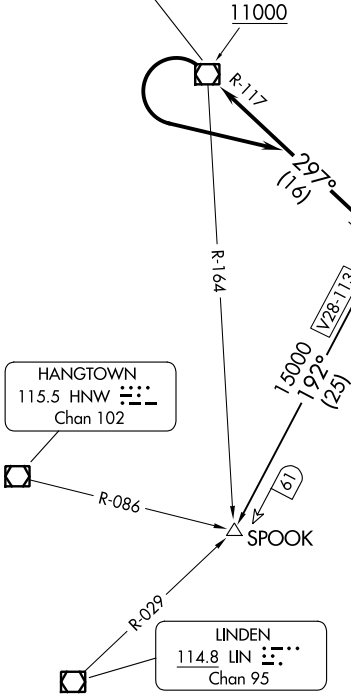
LAKE TAHOE (TVL)
SOUTH LAKE TAHOE, CALIFORNIA

**TOP ALTITUDE:
ASSIGNED BY ATC**

CLNC DEL 134.3
OAKLAND CENTER 127.95 316.1
CTAF 122.85

MUSTANG
117.9 FMG 
Chan 126

PALISADES
113.2 SWR 
Chan 79



TAKEOFF MINIMUMS

Rwy 36: 300-1 $\frac{3}{8}$ or standard with minimum climb of 755' per NM to 6500.

NOTE: DME required.
NOTE: Chart not to scale.

DEPARTURE ROUTE DESCRIPTION

TAKEOFF RUNWAY 36: Climbing left turn on heading 343° to intercept the SWR VOR/DME R-117 northwest bound. Cross RICHY/SWR 16 DME at or above 8300, cross SWR at or above 11000. Thence. . .

. . . on assigned route (Aircraft cleared on a transition turn left to intercept the SWR R-117 southeast bound to cross RICHY at or above 13000). Maintain ATC assigned altitude.

GENNE TRANSITION (RICHY7.GENNE): From over RICHY INT on SWR R-117 to GENNE.

MARRI TRANSITION (RICHY7.MARRI): From over RICHY INT on SWR R-117 to MARRI.

SPOOK TRANSITION (RICHY7.SPOOK): From over RICHY INT on FMG R-192 to SPOOK INT.

TILTS TRANSITION (RICHY7.TILTS): From over RICHY INT on SWR R-117 to TILTS.

RICHY SEVEN DEPARTURE

(RICHY7.SWR) 25FEB21

SOUTH LAKE TAHOE, CALIFORNIA
LAKE TAHOE (TVL)

SW-2, 31 OCT 2024 to 28 NOV 2024

SW-2, 31 OCT 2024 to 28 NOV 2024