

WAAS CH 97513 W25A	APP CRS 250°	Rwy Idg TDZE 1305 Apt Elev 1307
--	------------------------	---

RNAV (GPS) RWY 25

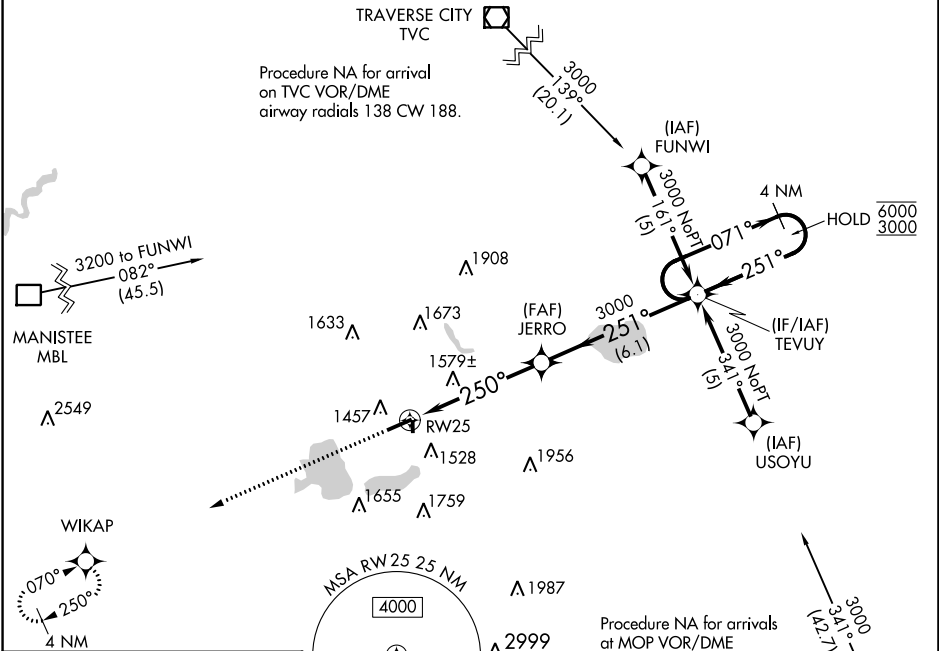
WEXFORD COUNTY (CAD)

RNP APCH - GPS.

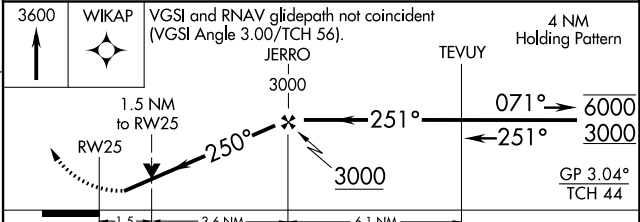
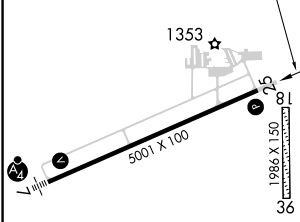
▼ Circling NA to Rwys 18 and 36. Rwy 25 helicopter visibility reduction below ¼ SM NA.
▲ For uncompensated Baro-VNAV systems, LNAV/VNAV NA below -24°C or above 54°C.

MISSED APPROACH: Climb to 3600 direct WIKAP and hold.

AWOS-3P 128.325	MINNEAPOLIS CENTER 132.9 338.3	UNICOM 122.8 (CTAF) 0
---------------------------	--	---------------------------------



ELEV 1307	TDZE 1305
-----------	-----------



CATEGORY	A	B	C	D
LPV DA		1625-7/8	320 (400-7/8)	
LNAV/VNAV DA		1869-15/8	564 (600-15/8)	
LNAV MDA	1840-1	535 (600-1)	1840-1½	535 (600-1½)
C CIRCLING	1840-1	533 (600-1)	2040-2 733 (800-2)	2060-2½ 753 (800-2½)

EC-1, 31 OCT 2024 to 28 NOV 2024

EC-1, 31 OCT 2024 to 28 NOV 2024