

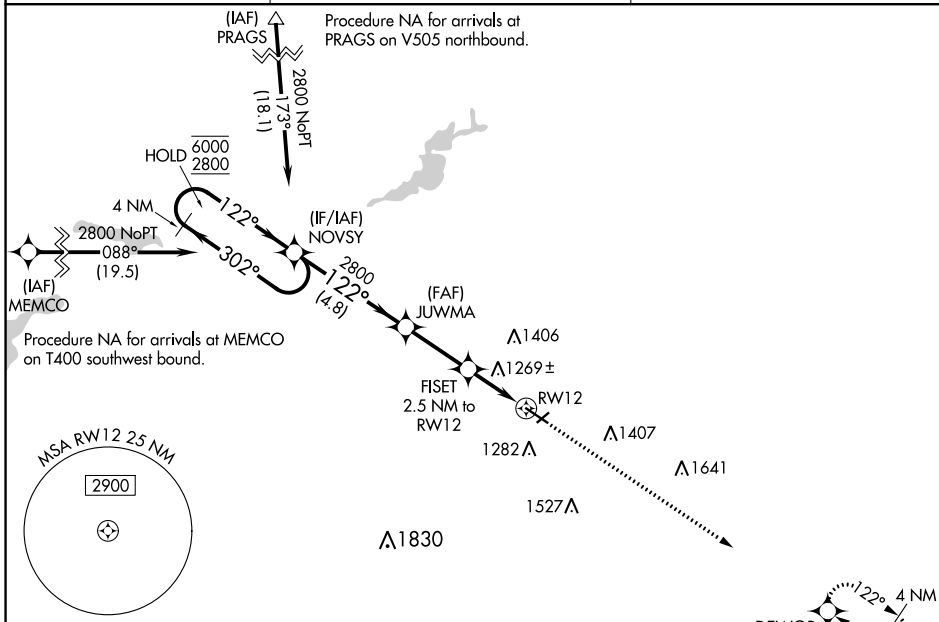
WAAS CH <b>82627</b> <b>W12A</b>	APP CRS <b>122°</b>	Rwy Idg <b>5500</b> TDZE <b>1127</b> Apt Elev <b>1145</b>
--	------------------------	---

# RNAV (GPS) RWY 12

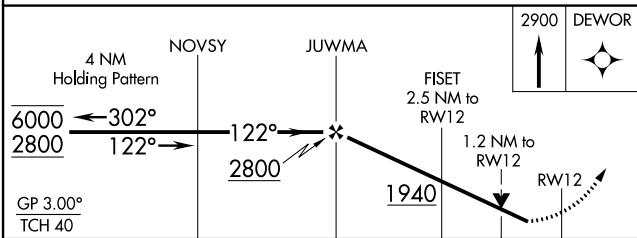
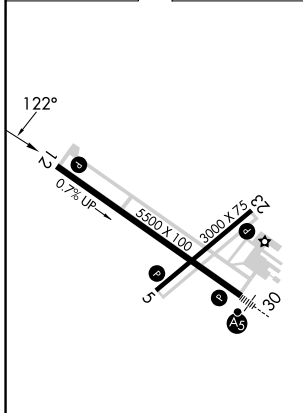
OWATONNA DEGNER RGNL (OWA)

RNP APCH - GPS.	MISSED APPROACH: Climb to 2900 direct DEWOR and hold.
<p><b>⚠</b> Rwy 12 helicopter visibility reduction below 3/4 SM NA. For uncompensated Baro-VNAV systems, LNAV/VNAV NA below -17°C or above 54°C.</p>	

AWOS-3 <b>128.325</b>	ROCHESTER APP CON * <b>119.8 251.125</b>	UNICOM <b>122.7 (CTAF)</b>
--------------------------	---	-------------------------------



ELEV 1145	TDZE 1127
-----------	-----------



CATEGORY	A	B	C	D
LPV DA	1420-7/8 293 (300-7/8)			
LNAV/VNAV DA	1400-7/8 273 (300-7/8)			
LNAV MDA	1520-1 393 (400-1)		1520-1 1/8 393 (400-1 1/8)	
<b>C</b> CIRCLING	1640-1 495 (500-1)	1700-1 555 (600-1)	1720-1 1/2 575 (600-1 1/2)	1880-2 1/4 735 (800-2 1/4)

MIRL Rwy 5-23  
REIL Rws 5, 12, and 23  
HIRL Rwy 12-30

NC-1, 31 OCT 2024 to 28 NOV 2024

NC-1, 31 OCT 2024 to 28 NOV 2024