


WAAS CH <b>86627</b> <b>W30A</b>	APP CRS <b>302°</b>	Rwy Idg <b>5500</b> TDZE <b>1145</b> Apt Elev <b>1145</b>
--	------------------------	---

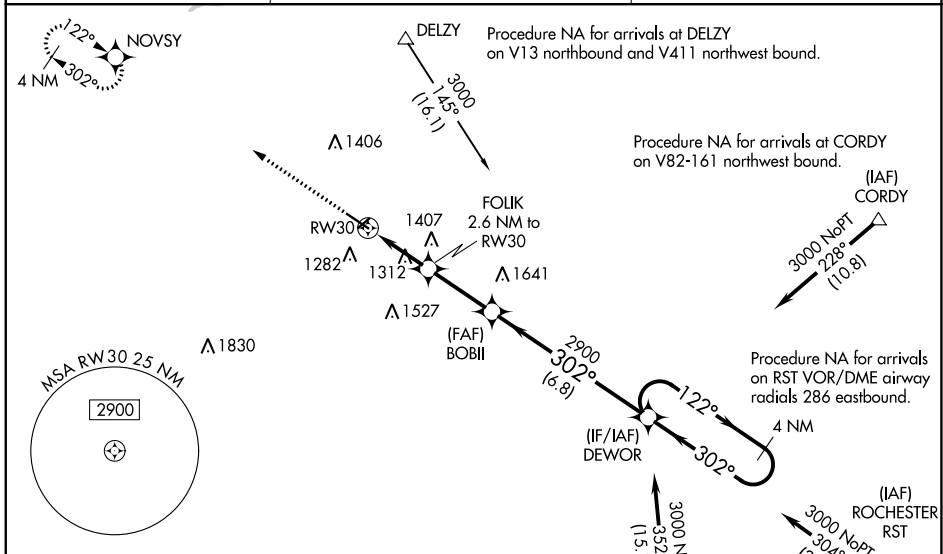
# RNAV (GPS) RWY 30

OWATONNA DEGNER RGNL (OWA)

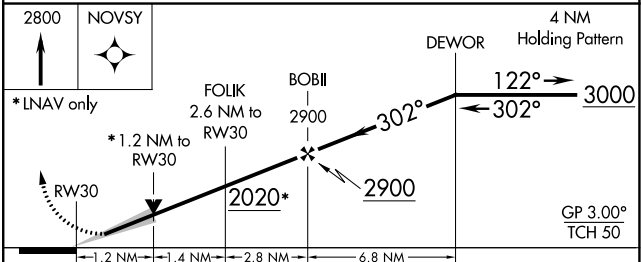
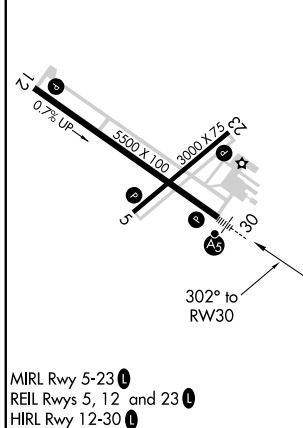
**⚠** For uncompensated Baro-VNAV systems, LNAV/VNAV NA below -17°C (2°F) or above 54°C (130°F). DME/DME/RNP-0.3 NA. When local altimeter setting not received, use Fairbault altimeter setting and increase all DA 41 feet and all MDA 60 feet. Increase LNAV/VNAV all Cats visibility to 1½ mile, increase LNAV Cats C/D visibility to 1 mile, Cat C Circling visibility to ¾ mile and Cat D visibility to 2½ mile. VDP and Baro-VNAV NA when using Fairbault altimeter setting. For inop MALSR increase LNAV/VNAV all Cats visibility to 1½ miles. For inop MALSR, when using Fairbault altimeter setting, increase LNAV/VNAV all Cats visibility to 1½ mile, LNAV Cats C/D visibility to 1½ mile.

**MALSR**  
  
**MISSED APPROACH:**  
 Climb to 2800 direct NOVSY and hold.

<b>AWOS-3</b> <b>128.325</b>	<b>ROCHESTER APP CON *</b> <b>119.8 251.125</b>	<b>UNICOM</b> <b>122.7 (CTAF) 0</b>
---------------------------------	--	--



ELEV 1145	TDZE 1145
-----------	-----------



CATEGORY	A	B	C	D
LPV DA		1345-½	200 (200-½)	
LNAV/VNAV DA		1567-1	422 (500-1)	
LNAV MDA	1580-½	435 (500-½)	1580-¾	435 (500-¾)
<b>CIRCLING</b>	1640-1 495 (500-1)	1700-1 555 (600-1)	1720-1½ 575 (600-1½)	1880-2¼ 735 (800-2¼)

NC-1, 31 OCT 2024 to 28 NOV 2024

NC-1, 31 OCT 2024 to 28 NOV 2024