

WAAS CH 82231 W11A	APP CRS 110°	Rwy Idg 4099 TDZE 482 Apt Elev 482
----------------------------------------	------------------------	---------------------------------------------------

RNAV (GPS) RWY 11

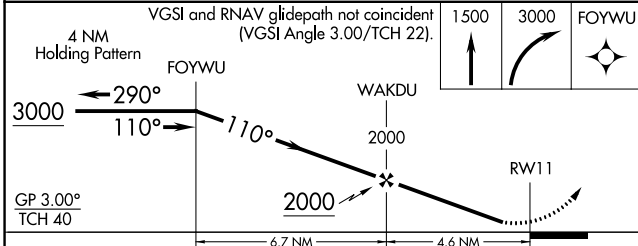
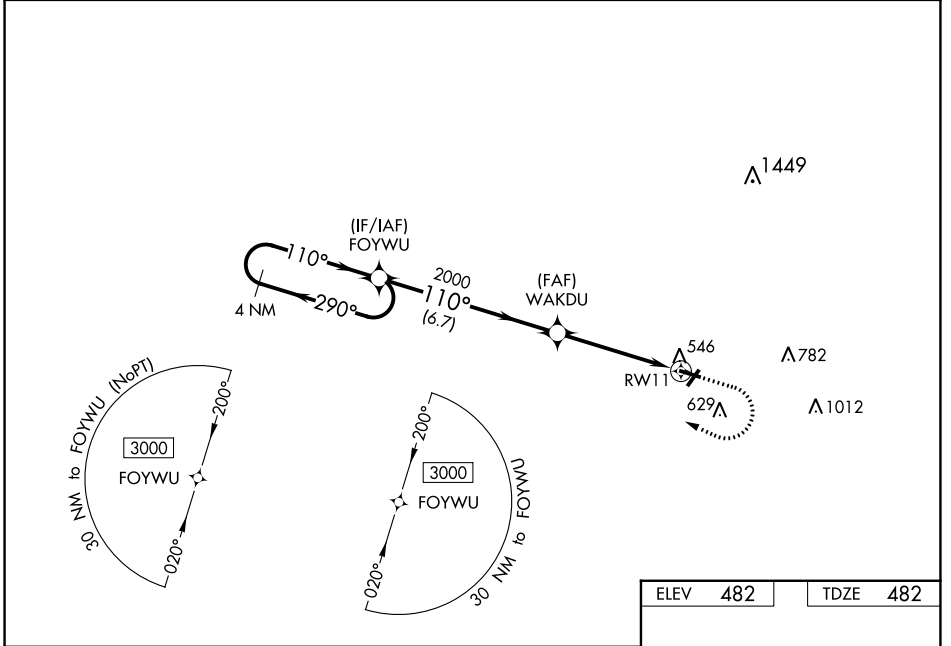
OLNEY-NOBLE (OLY)

RNP APCH.

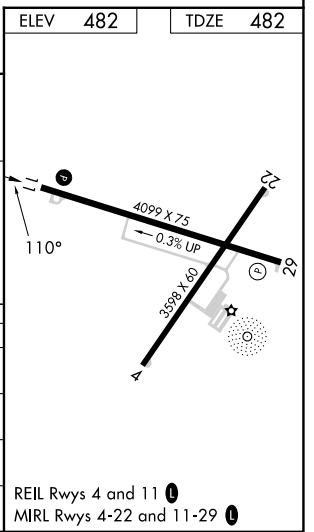
▼ Baro-VNAV NA when using Evansville altimeter setting. For uncompensated Baro-VNAV systems, LNAV/VNAV NA below -15°C or above 54°C. When local altimeter setting not received, use **▲** Evansville altimeter setting and increase all DAs 126 feet, MDAs 140 feet; increase LNAV/VNAV all Cats visibility 1/8 SM, LNAV Cat C/D 3/8 SM and Circling Cat C 1/4 SM and Cat D 1/2 SM.

MISSED APPROACH: Climb to 1500 then climbing right turn to 3000 direct FOYWU and hold.

AWOS-3 119.275	KANSAS CITY CENTER 124.3 269.15	UNICOM 123.0 (CTAF) 0
--------------------------	-------------------------------------------	---------------------------------



CATEGORY	A	B	C	D
LPV DA	732-1		250 (300-1)	
LNAV/VNAV DA	962-1 ⁵ / ₈		480 (500-1 ⁵ / ₈)	
LNAV MDA	920-1	438 (500-1)	920-1 ¹ / ₄	438 (500-1 ¹ / ₄)
C CIRCLING	960-1	478 (500-1)	960-1 ¹ / ₂ 478 (500-1 ¹ / ₂)	1180-2 ¹ / ₄ 698 (700-2 ¹ / ₄)



EC-3, 31 OCT 2024 to 28 NOV 2024

EC-3, 31 OCT 2024 to 28 NOV 2024